

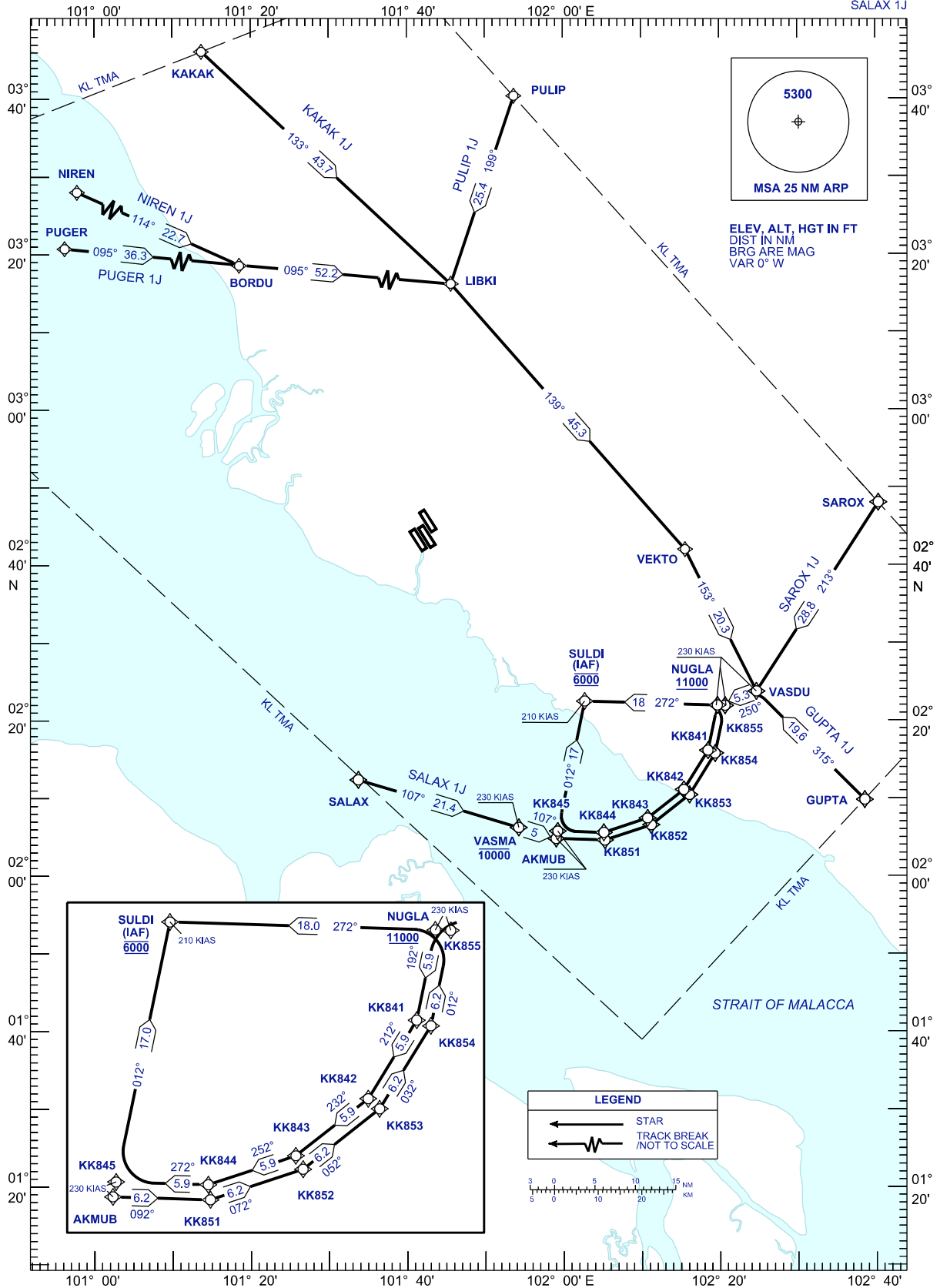
**STANDARD ARRIVAL CHART
INSTRUMENT (STAR) - ICAO**

TRANSITION ALT 11000 FT

| | | | |
|-----|---------|------|---------|
| APP | 121.250 | TWR | 118.800 |
| | 124.200 | | 118.500 |
| | 118.650 | | 119.800 |
| | 125.850 | ATIS | 128.050 |
| | 135.750 | | |

**SEPANG/KL INTERNATIONAL
AIRPORT (WMCK)
RNAV(GNSS) RWY 32R, 32L, 33**

PMS SOUTH
PUGER 1J KAKAK 1J SAROX 1J
NIREN 1J PULIP 1J GUPTA 1J
SALAX 1J



CHANGES: CHANGE BEARING & DISTANCE BETWEEN PUGER TO BORDU,
CHANGE COURSE BETWEEN NIREN TO BORDU.