

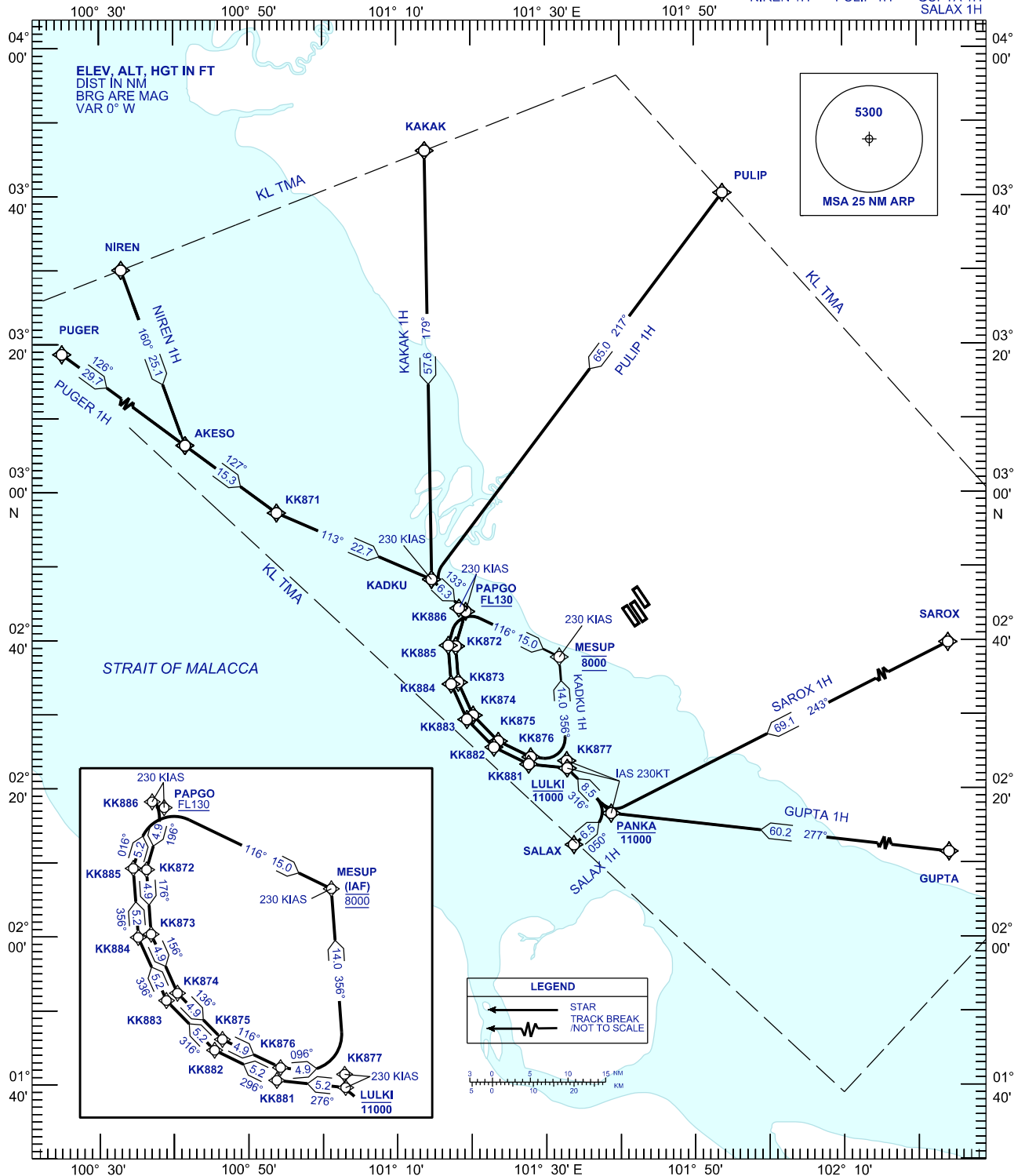
**STANDARD ARRIVAL CHART
INSTRUMENT (STAR) - ICAO**

TRANSITION ALT 11000 FT

APP	121.250	TWR	118.800
	124.200		118.500
	118.650		119.800
	125.850	ATIS	128.050
135.750			

**SEPANG/KL INTERNATIONAL
AIRPORT (WMKK)
RNAV (GNSS) RWY 32R, 32L, 33,
14L, 14R, 15**

PUGER 1H KAKAK 1H PMS WEST
NIREN 1H PULIP 1H SAROX 1H
GUPTA 1H
SALAX 1H



CHANGES: CHANGE BEARING & DISTANCE BETWEEN PUGER TO AKESO,
CHANGE DISTANCE BETWEEN KK872 TO KK873.