

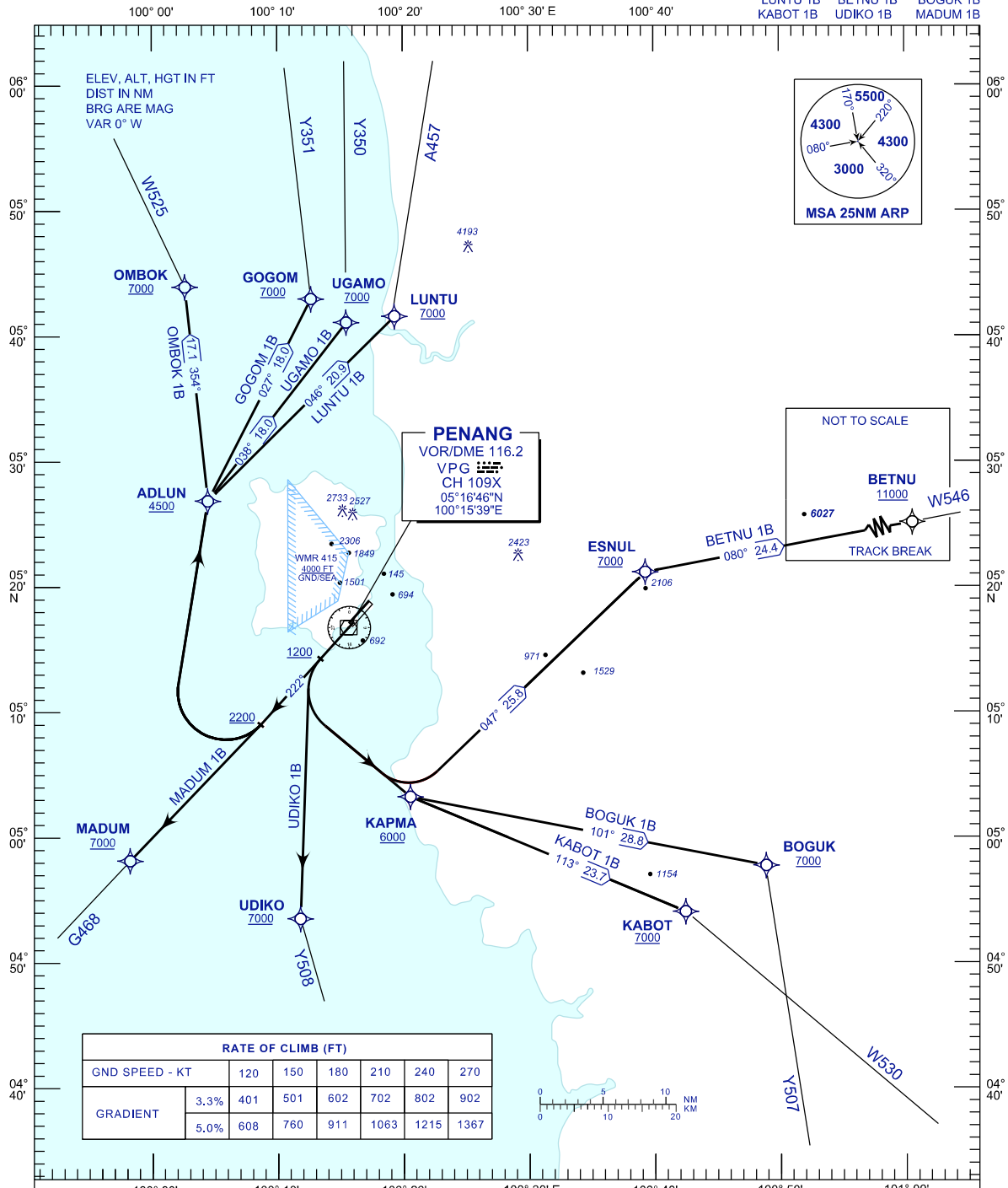
**STANDARD DEPARTURE CHART  
INSTRUMENT (SID) - ICAO**

TRANSITION ALTITUDE  
11000 FT

APP 125.925  
TWR 121.1  
SMC 121.6, 121.9  
ATIS 126.4

**PENANG/PENANG  
INTERNATIONAL AIRPORT (WMKP)  
RNAV (GNSS) RWY 22**

OMBOK 1B GOGOM 1B UGAMO 1B  
LUNTU 1B BETNU 1B BOGUK 1B  
KABOT 1B UDIKO 1B MADUM 1B



**COMMUNICATION FAILURE :**

- SQUAWK 7600
- IF UNDER PILOT NAVIGATION, MAINTAIN LAST ASSIGNED LEVEL FOR 3 MINUTES, IF NO ONWARD CLEARANCE IS RECEIVED. SUBSEQUENTLY CLIMB TO COMPLY WITH SID.
- IF UNDER RADAR VECTORED : MAINTAIN VECTOR FOR 2 MINUTES, IF BELOW MSA, CLIMB TO MSA, THEN TRACK TO INTERCEPT CLEARED OR PREVIOUSLY ASSIGNED SID TO DESTINATION.

CHANGES: CHANGE APP FREQUENCY VALUE.