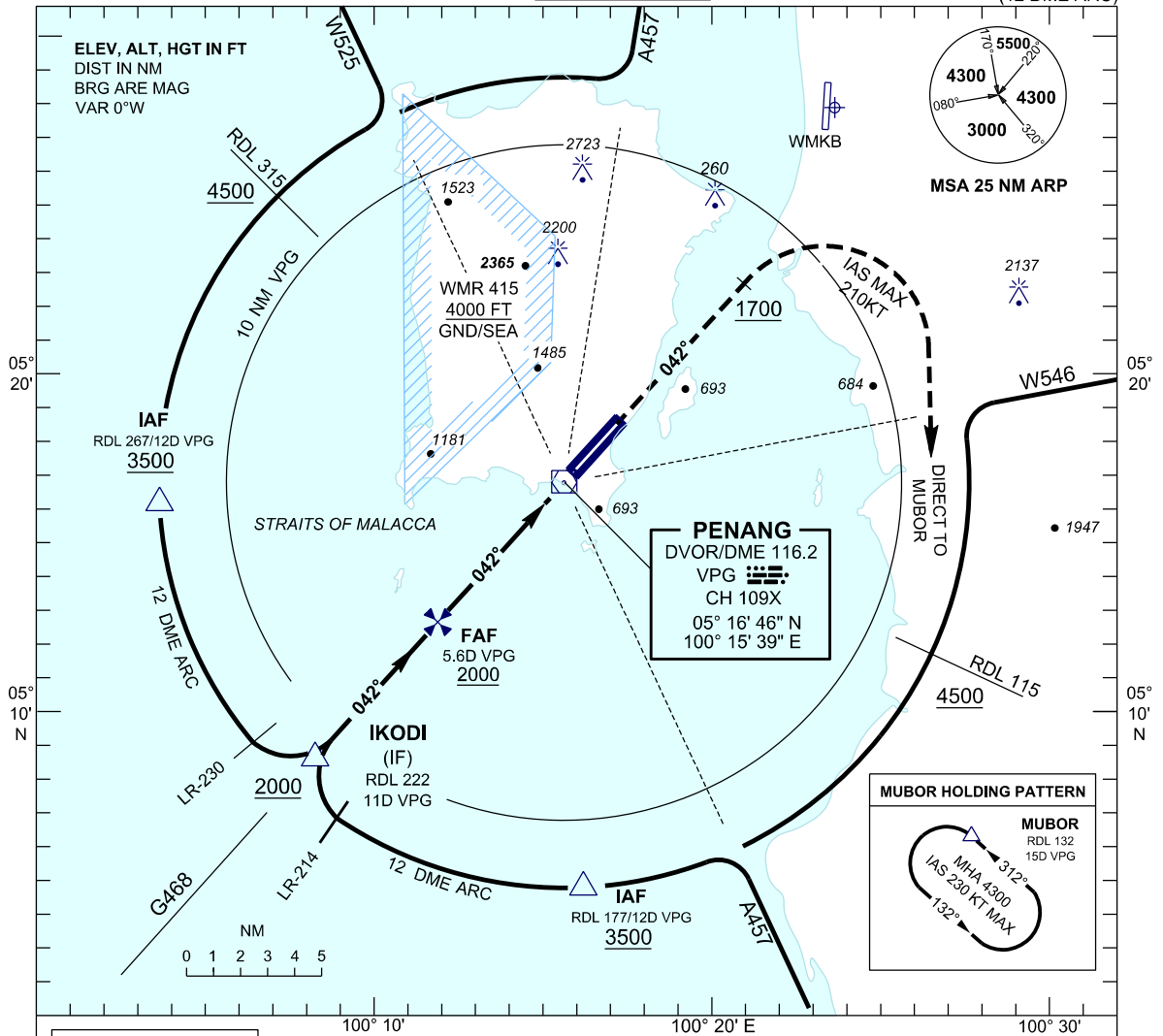


**INSTRUMENT  
APPROACH  
CHART - ICAO**

**AERODROME ELEV 10 FT**  
HEIGHTS RELATED TO  
THR RWY 04 - ELEV 9 FT

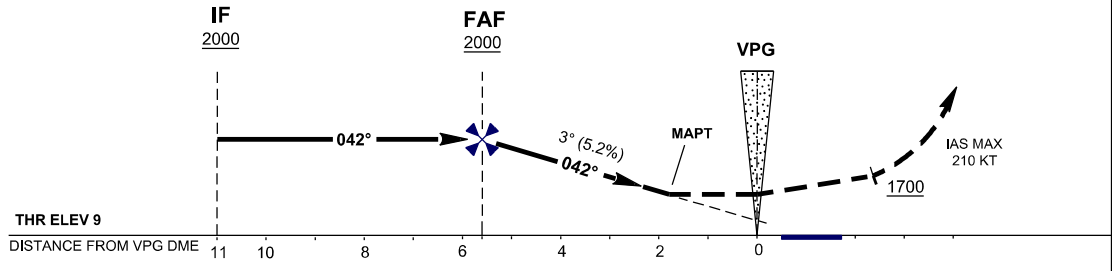
APP 125.925  
TWR 121.1  
SMC 121.6, 121.9  
ATIS 126.4

**PENANG/PENANG  
INTERNATIONAL AIRPORT (WMKP)  
RWY 04**  
VOR Z  
(12 DME ARC)



TRANSITION LEVEL FL 130  
TRANSITION ALT 11000

**MISSED APPROACH**  
CLIMB ON TR 042° TO 4300 FT. ON PASSING  
1700 FT TURN RIGHT DIRECT TO MUBOR  
HOLDING PATTERN OR AS DIRECTED BY ATC



THR ELEV 9

DISTANCE FROM VPG DME

OCA/H				
ACFT CAT.	A	B	C	D
STRAIGHT IN APPROACH	790 (781) / 1.8 VPG			
CIRCLING	1030 (1021)	1470 (1461)	1560 (1551)	1560 (1551)

DME VPG	NM	5.5	4.5	3.5	2.5	1.5	0.5
DIST THR (RWY04)	NM	6.0	5.0	4.0	3.0	2.0	1.0
ALTITUDE	FT	1970	1650	1330	1010	690	370

\* CIRCLING PROHIBITED IN SECTOR 250° - 020° FROM RWY 04

CHANGES : AMEND FREQ FOR APP.