

**STANDARD ARRIVAL CHART  
INSTRUMENT (STAR) - ICAO**

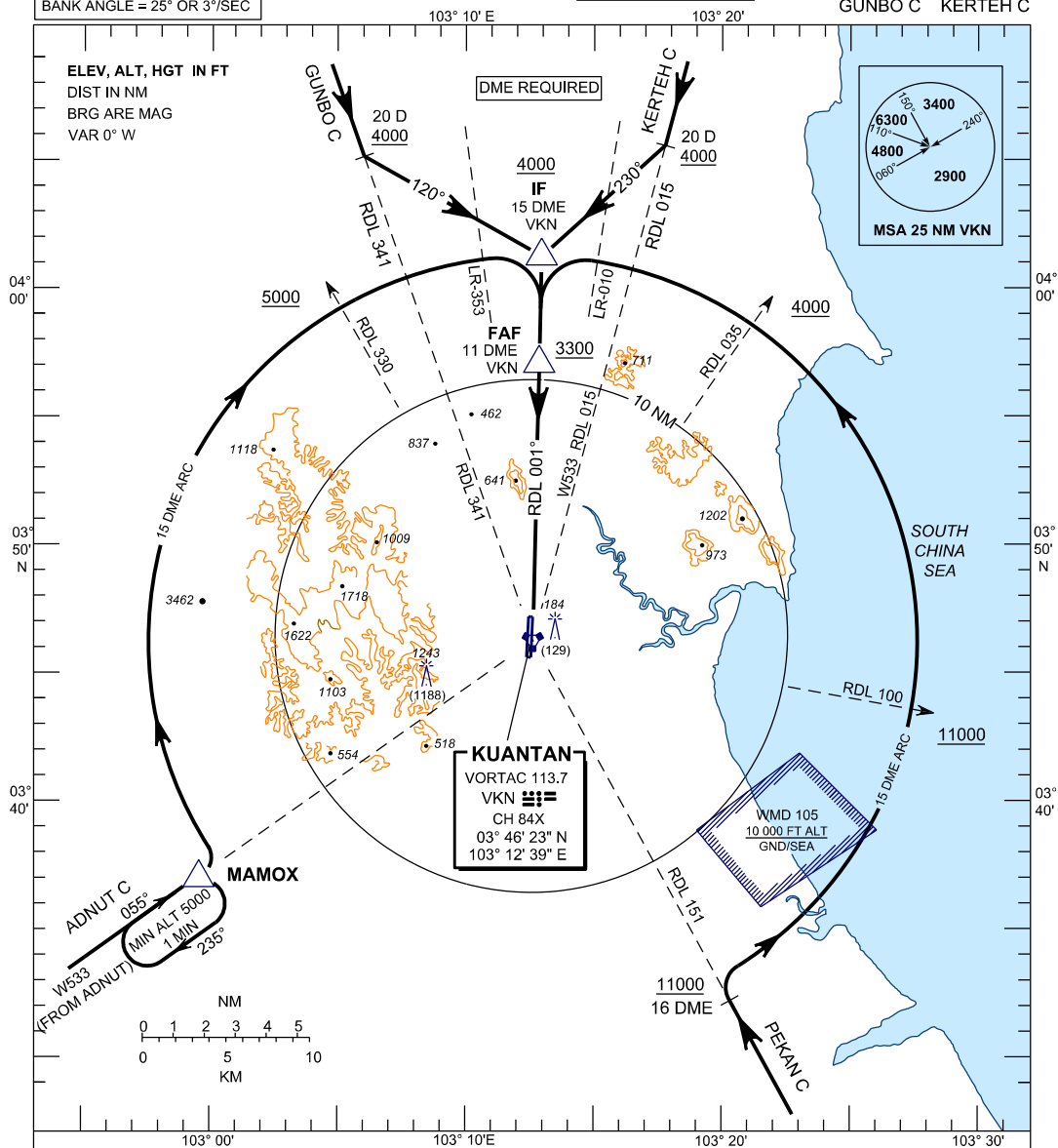
**KUANTAN/SULTAN  
AHMAD SHAH (WMKD)  
RWY 18**

TWR 118.1, 238.1  
GND 263.9, 120.4  
APP 119.7, 121.5  
ATIS 127.5, 253.8  
SRA 261.6, 118.7

TRANSITION ALTITUDE  
11,000 FT

ADNUT C PEKAN C  
GUNBO C KERTEH C

BANK ANGLE = 25° OR 3°/SEC



**ADNUT C ARRIVAL**

- FROM ADNUT ON W533 DIRECT TO VKN
- AT 16 DME FOLLOW ARC 15 DME VKN TO IF
- INTERCEPT RDL 001 VKN

**GUNBO C ARRIVAL**

- FROM GUNBO ON RDL 341 VKN DIRECT TO VKN VOR
- CROSSING 20 DME VKN, TURN LEFT TRACK 120° TO IF
- INTERCEPT RDL 001 VKN

**PEKAN C ARRIVAL**

- FROM PEKAN (VPK) ON RDL 151 DIRECT TO VKN
- AT 16 DME FOLLOW ARC 15 DME VKN TO IF
- INTERCEPT RDL 001 VKN

**KERTEH C ARRIVAL**

- FROM KERTEH (VKT) ON W533 DIRECT TO VKN
- CROSSING 20 DME VKN
- TURN RIGHT TRACK 230° TO IF
- INTERCEPT RDL 001 VKN

**VERTICAL RESTRICTIONS**

ADHERE TO VERTICAL RESTRICTIONS eg. 5000 = NOT BELOW 5000 FT ON DESCENT UNLESS SPECIFICALLY CANCELLED BY ATC

**COMMUNICATION FAILURE :**

- \* SQUAWK 7600
- \* IF UNDER PILOT NAVIGATION, CONTINUE ON STAR AND LAND
- \* IF UNDER 'RADAR VECTORED' : MAINTAIN VECTOR FOR 1 MINUTE
- \* IF BELOW 'MSA', CLIMB TO 'MSA', THEN TRACK TO INTERCEPT CLEARED OR PREVIOUSLY ASSIGNED STAR AND LAND