

**STANDARD ARRIVAL CHART
INSTRUMENT (STAR) - ICAO**

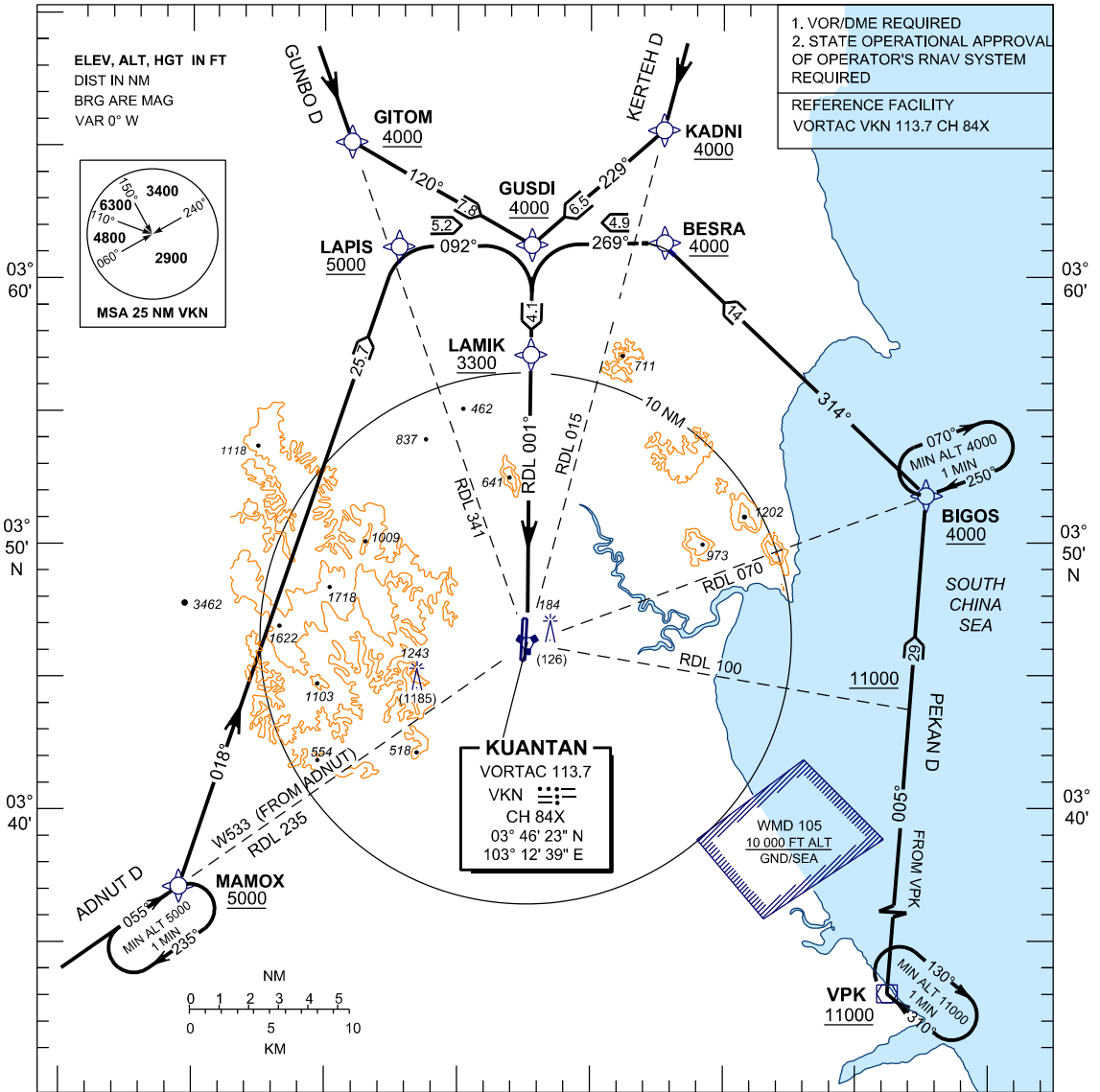
TRANSITION ALTITUDE
11 000 FT

TWR 118.1, 238.1
GND 263.9, 120.4
APP 119.7, 121.5
ATIS 127.5, 253.8
SRA 261.6, 118.7

**KUANTAN/SULTAN
AHMAD SHAH (WMKD)
RWY 18 (RNAV)**

ADNUT D PEKAN D
GUNBO D KERTEH D

BANK ANGLE = 25° OR 3°/SEC



1. VOR/DME REQUIRED
2. STATE OPERATIONAL APPROVAL OF OPERATOR'S RNAV SYSTEM REQUIRED
REFERENCE FACILITY
VORTAC VKN 113.7 CH 84X

ADNUT D ARRIVAL

- FROM ADNUT ON W533 TO MAMOX
- AT MAMOX TURN LEFT TO LAPIS THENCE TO GUSDI
- INTERCEPT RDL 001 VKN

KERTEH D ARRIVAL

- FROM KERTEH (VPK) ON W533 TO KADNI
- AT KADNI TURN RIGHT TO GUSDI
- INTERCEPT RDL 001 VKN

GUNBO D ARRIVAL

- FROM GUNBO ON RDL 341 VKN TO GITOM
- AT GITOM TURN LEFT TO GUSDI
- INTERCEPT RDL 001 VKN

PEKAN D ARRIVAL

- FROM PEKAN (VPK) DIRECT TO BIGOS
- AT BIGOS TURN LEFT TO BESRA THENCE TO GUSDI
- INTERCEPT RDL 001 VKN

VERTICAL RESTRICTIONS

ADHERE TO VERTICAL RESTRICTIONS EG. 5000 = NOT BELOW 5000 FT ON DESCENT UNLESS SPECIFICALLY CANCELLED BY ATC

COMMUNICATION FAILURE:

- * SQUAWK 7600
- * IF UNDER PILOT NAVIGATION, CONTINUE ON STAR AND LAND
- * IF UNDER 'RADAR VECTORING': MAINTAIN VECTOR FOR 1 MINUTE
- * IF BELOW 'MSA', CLIMB TO 'MSA', THEN TRACK TO INTERCEPT CLEARED OR PREVIOUSLY ASSIGNED STAR AND LAND

CHANGES : REMOVE TRACK BETWEEN WPT LAPIS AND LAMIK,
REMOVE TRACK BETWEEN WPT BESRA AND LAMIK.