

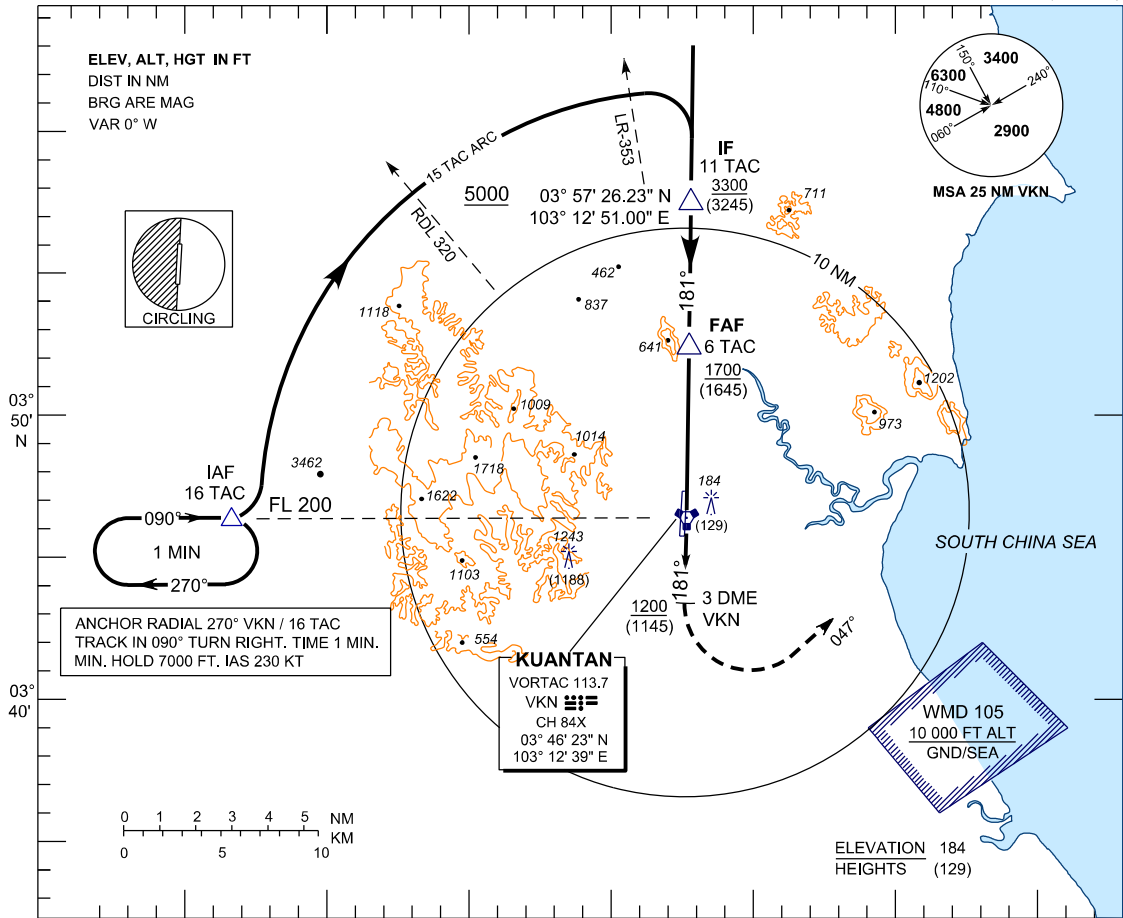
**INSTRUMENT
APPROACH
CHART - ICAO**

AERODROME ELEV 55 FT
HEIGHT RELATED TO
THR RWY 18 - ELEV 55 FT

TWR 118.1, 238.1
GND 263.9, 120.4
APP 119.7, 121.5
ATIS 127.5, 253.8
SRA 261.6, 118.7

**KUANTAN/SULTAN
AHMAD SHAH (WMKD)
RWY 18**

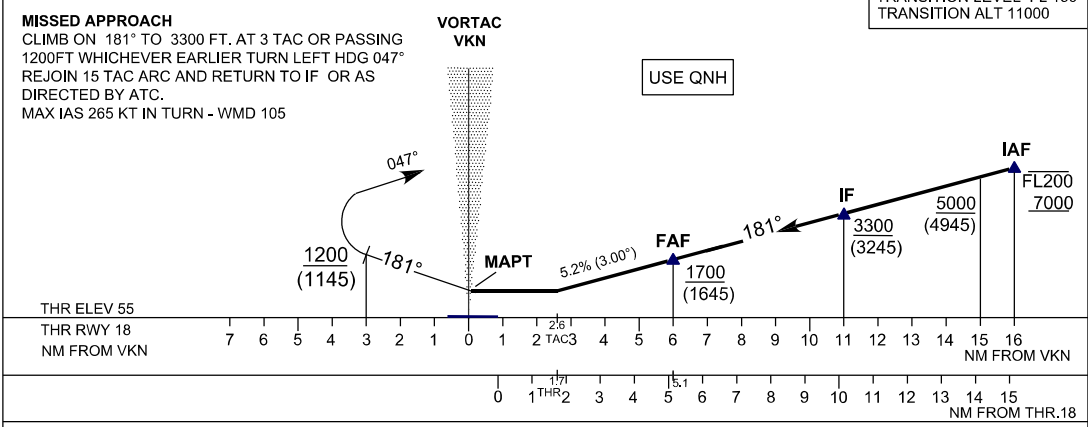
TACAN 4 (HI / LO)



MISSED APPROACH
CLIMB ON 181° TO 3300 FT. AT 3 TAC OR PASSING
1200FT WHICHEVER EARLIER TURN LEFT HDG 047°
REJOIN 15 TAC ARC AND RETURN TO IF OR AS
DIRECTED BY ATC.
MAX IAS 265 KT IN TURN - WMD 105

USE QNH

TRANSITION LEVEL FL 130
TRANSITION ALT 11000



OCA(OCH)				
AIRCRAFT CATEGORY	A	B	C	D
STRAIGHT - IN - APPROACH	660 (605) / 2.6 TAC			
CIRLING & MIN VISIBILITY - KM (NM)	600(545)	900(845)	1100(1045)	
	1.9(1.0)	2.8(1.5)	3.7(2.0)	4.6(2.5)

CAUTION : CIRLING IS NOT AUTHORISED WEST OF
RUNWAY 18/36

ALTITUDE VS DME DISTANCE TO THR RWY 18					
DME DISTANCE	6	5	4	3	2.6
ALTITUDE	1700	1380	1060	1060	660

TIME TO THR RWY 18 FROM FAP 5 NM			
GROUND SPEED (KT)	90	120	150
MINUTES : SECONDS	3:20	2:30	2:00
5.2% DESCENT (FT/MIN)	480	640	800

TIME TO THR RWY 18 FROM FAP 5 NM			
GROUND SPEED (KT)	180	210	240
MINUTES : SECONDS	1:40	1:26	1:15
5.2% DESCENT (FT/MIN)	1000	1115	1275