

**STANDARD ARRIVAL CHART  
INSTRUMENT (STAR) - ICAO**

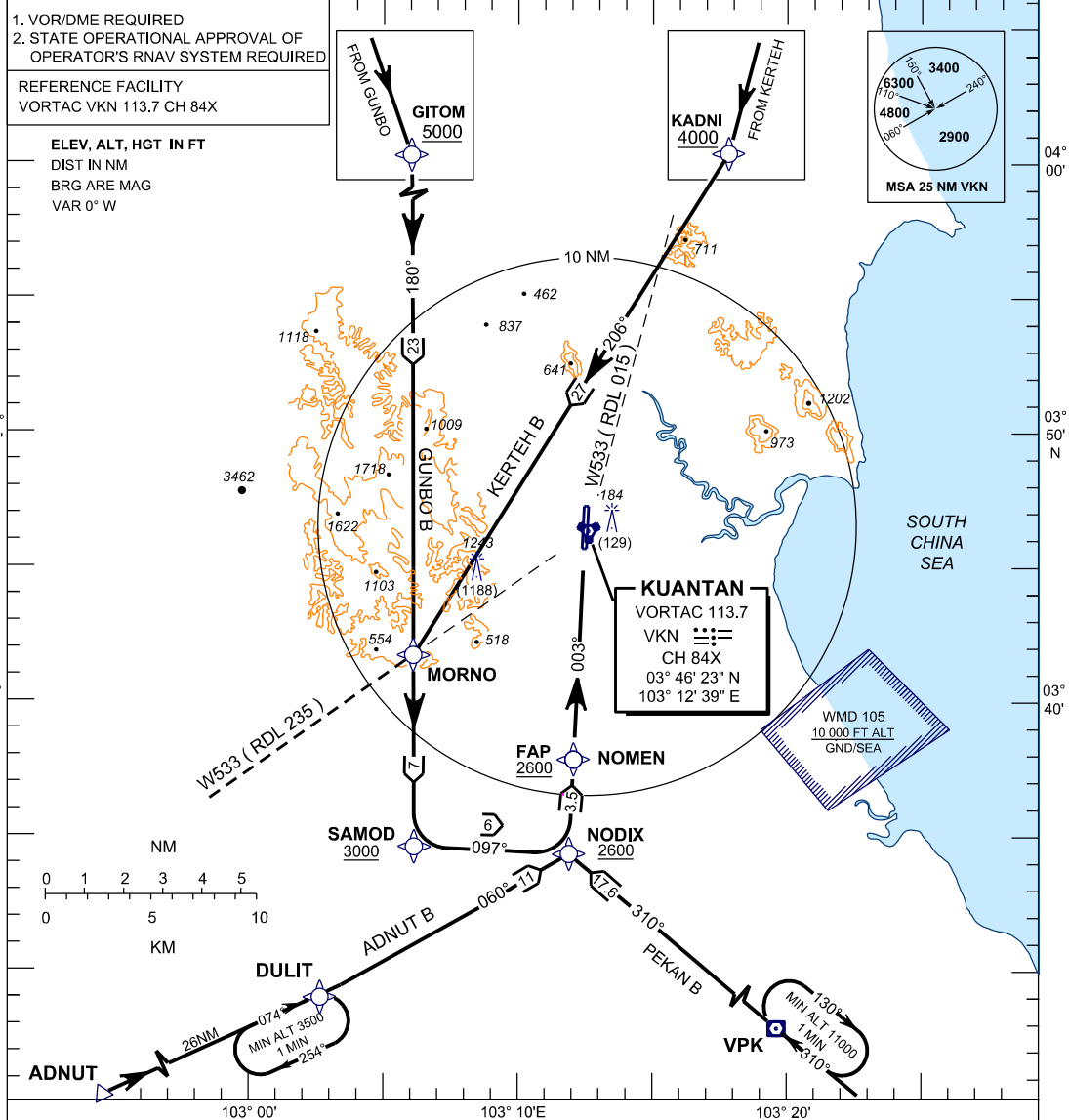
**KUANTAN/SULTAN  
AHMAD SHAH (WMKD)  
RWY 36 (RNAV)**

TRANSITION ALTITUDE  
11,000 FT

TWR 118.1, 238.1  
GND 263.9, 120.4  
APP 119.7, 121.5  
ATIS 127.5, 253.8  
SRA 261.6, 118.7

BANK ANGLE = 25° OR 3°/SEC

ADNUT B PEKAN B  
GUNBO B KERTEH B



**ADNUT B ARRIVAL**  
- FROM ADNUT DIRECT TO DULIT  
- THENCE TURN LEFT TO NODIX  
- INTERCEPT LOC

**GUNBO B ARRIVAL**  
- FROM GUNBO RDL 341 VKN DIRECT TO VKN  
- AT GITOM TURN RIGHT DIRECT TO MORNO  
- THENCE TO SAMOD TO NODIX  
- INTERCEPT LOC

**KERTEH B ARRIVAL**  
- FROM KERTEH (VKP) ON W533 DIRECT TO VKN  
- AT KADNI DIRECT TO MORNO  
- THENCE TO SAMOD TO NODIX  
- INTERCEPT LOC

**PEKAN B ARRIVAL**  
- FROM PEKAN (VPK) ON RDL 310 TO NODIX  
- INTERCEPT LOC

**VERTICAL RESTRICTIONS**

ADHERE TO VERTICAL RESTRICTIONS eg. 5000 = NOT BELOW 5000 FT ON DESCENT UNLESS SPECIFICALLY CANCELLED BY ATC

**COMMUNICATION FAILURE :**

- \* SQUAWK 7600
- \* IF UNDER PILOT NAVIGATION, CONTINUE ON STAR AND LAND
- \* IF UNDER 'RADAR VECTORED' : MAINTAIN VECTOR FOR 1 MINUTE
- \* IF BELOW 'MSA', CLIMB TO 'MSA', THEN TRACK TO INTERCEPT CLEARED OR PREVIOUSLY ASSIGNED STAR AND LAND