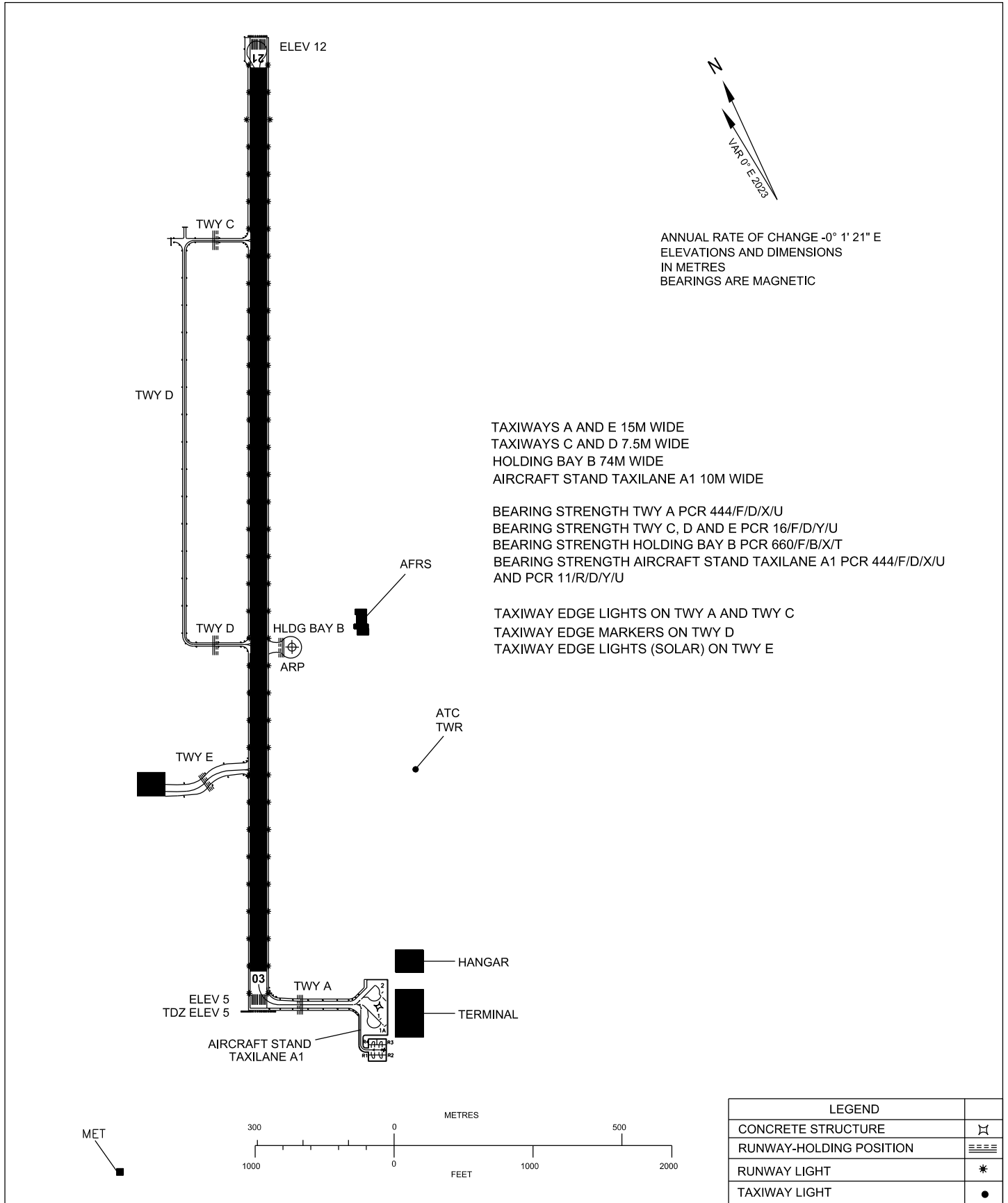


**AERODROME GROUND  
MOVEMENT CHART - ICAO**

APRON ELEV  
4 M

TWR 118.0  
SMC 121.6  
ATIS 127.45

**MALACCA/  
MALACCA AIRPORT**



TAXIWAYS A AND E 15M WIDE  
TAXIWAYS C AND D 7.5M WIDE  
HOLDING BAY B 74M WIDE  
AIRCRAFT STAND TAXILANE A1 10M WIDE

BEARING STRENGTH TWY A PCR 444/F/D/X/U  
BEARING STRENGTH TWY C, D AND E PCR 16/F/D/Y/U  
BEARING STRENGTH HOLDING BAY B PCR 660/F/B/X/T  
BEARING STRENGTH AIRCRAFT STAND TAXILANE A1 PCR 444/F/D/X/U  
AND PCR 11/R/D/Y/U

TAXIWAY EDGE LIGHTS ON TWY A AND TWY C  
TAXIWAY EDGE MARKERS ON TWY D  
TAXIWAY EDGE LIGHTS (SOLAR) ON TWY E

**CHANGES :** PAVEMENT BEARING STRENGTH  
ADD INFO ON HOLDING BAY B