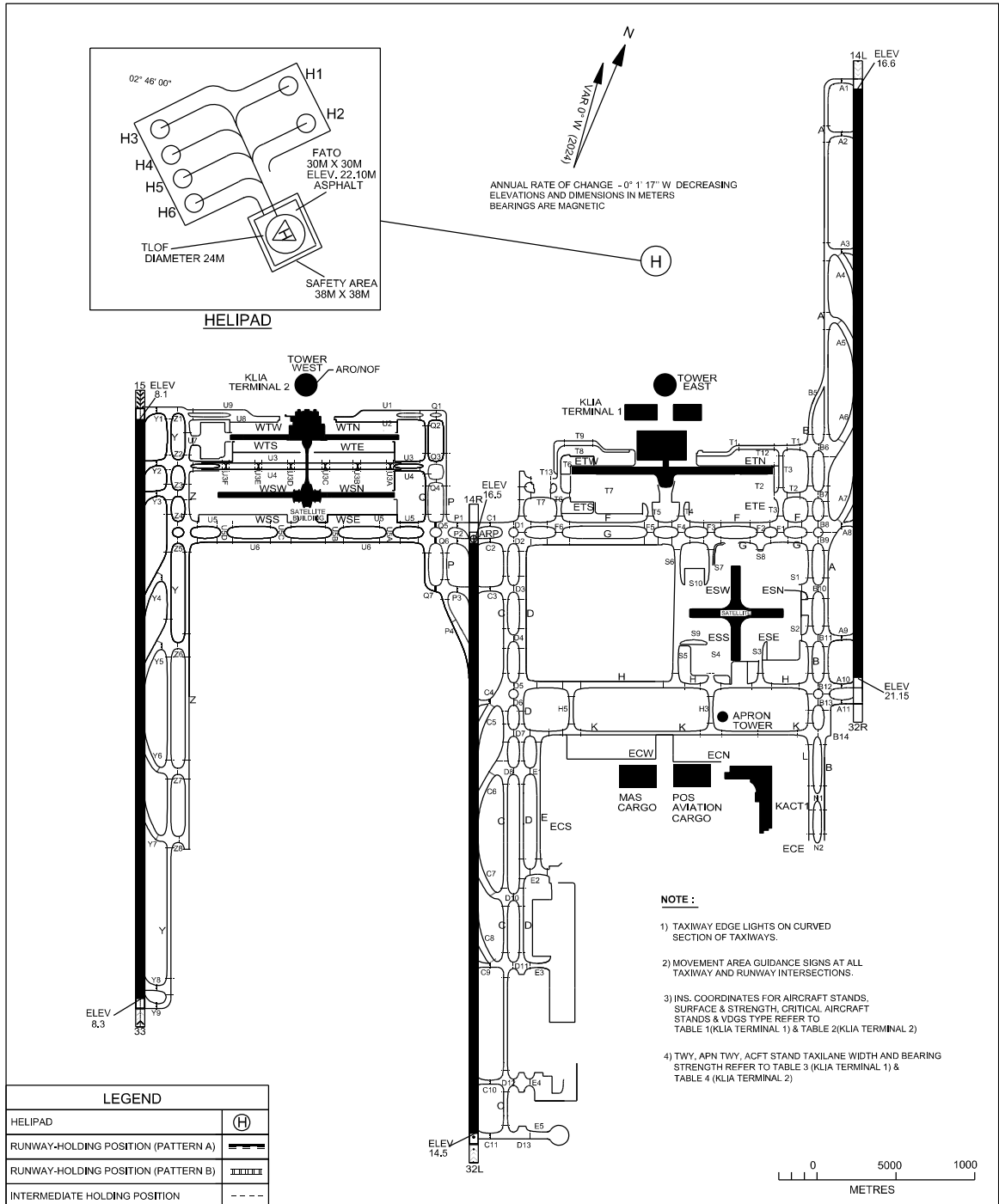


**AERODROME GROUND
MOVEMENT CHART - ICAO**

APRON ELEV	RWY 14L/32R	RWY 14R/32L	RWY 15/33	GROUND	GROUND
EAST 21 M	TWR 118.800	TWR 118.500	TWR 119.800	122.150	121.725
WEST 10 M	GND 121.650	GND 121.800	GND 118.050	122.850	122.550
		GND 122.525		121.800	130.750
				123.250	

**SEPANG/
KL INTERNATIONAL
AIRPORT**



CHANGES : UPDATE IHP MARKINGS IN THE CHART
UPDATE INFORMATION ON BEARING STRENGTH