

**STANDARD DEPARTURE CHART  
INSTRUMENT (SID) - ICAO**

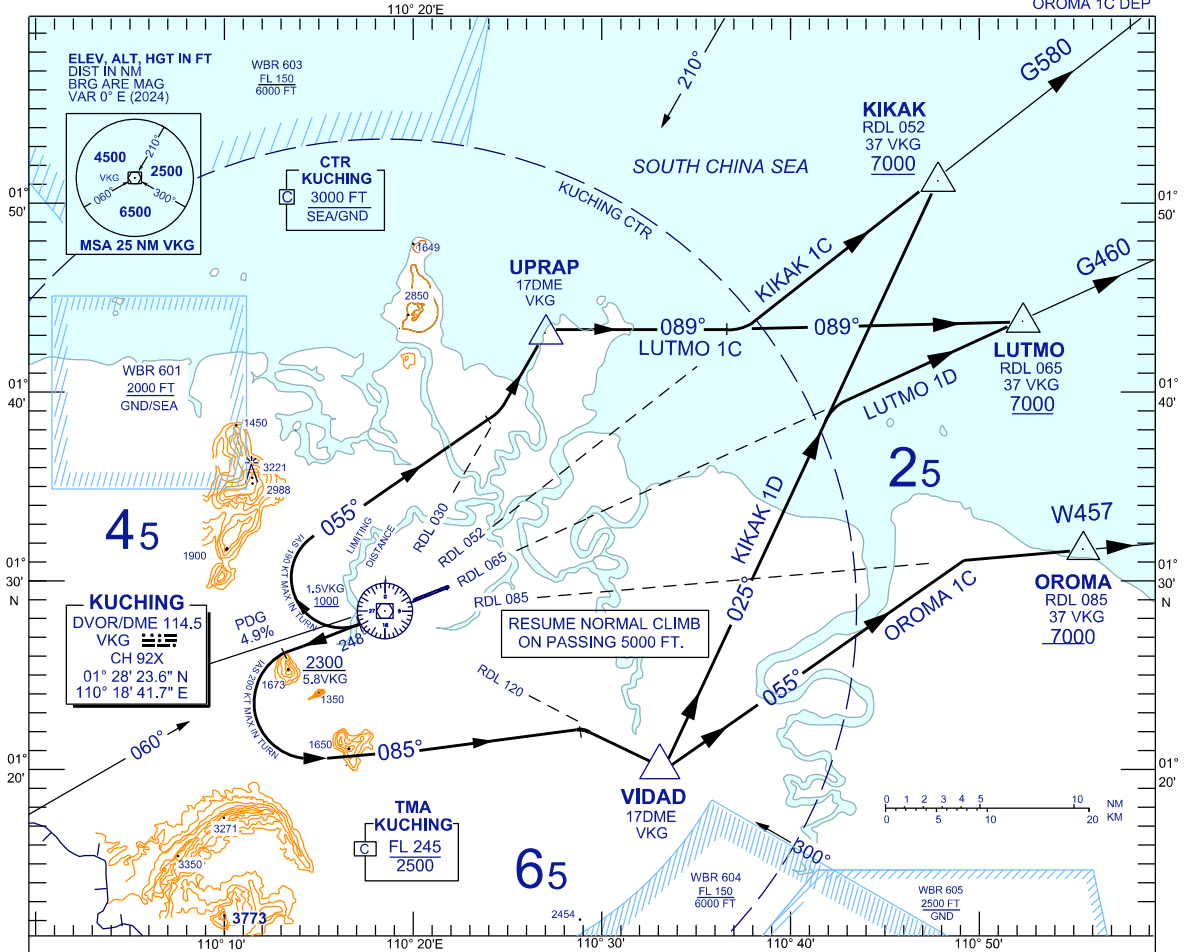
TRANSITION ALTITUDE  
11,000 FT

TWR	118.1 (P)	SMC	121.9
	121.7 (S)	ATIS	128.4
APP	120.2 (P)	FIS	134.75
	123.85 (S)		
ACC	134.5 (P)		
	125.35 (S)		

**KUCHING/KUCHING (WBGG)  
RWY 25**

KIKAK 1C DEP  
LUTMO 1C DEP  
KIKAK 1D DEP  
LUTMO 1D DEP  
OROMA 1C DEP

BANK ANGLE : 15° ACHEIVED



**KIKAK ONE CHARLIE DEPARTURE  
LUTMO ONE CHARLIE DEPARTURE**

**RWY 25 (RIGHT TURN)**

CLIMB AT 4.9% ON TRACK 248°, PASSING 1000 FT,  
TURN RIGHT (AT/NOT LATER THAN 1.5DME VKG),

**FOR KIKAK ONE CHARLIE**

TRACK 055°, TO INTERCEPT RDL 030 TO UPRAP THEN TRACK 089°  
TO INTERCEPT RDL 052 TO KIKAK

**FOR LUTMO ONE CHARLIE**

TRACK 055°, TO INTERCEPT RDL 030 TO UPRAP THEN TRACK 089°  
TO INTERCEPT RDL 065 TO LUTMO

**OROMA ONE CHARLIE DEPARTURE  
LUTMO ONE DELTA DEPARTURE  
KIKAK ONE DELTA DEPARTURE**

**RWY 25 (LEFT TURN)**

CLIMB AT 4.9% ON TRACK 248°  
AT/ABOVE 2300 FEET, TURN LEFT,

**FOR OROMA ONE CHARLIE**

TRACK 085° TO INTERCEPT RDL 120 TO VIDAD, THEN TRACK 055°  
TO INTERCEPT RDL 085 TO OROMA

**FOR LUTMO ONE DELTA**

TRACK 085° TO INTERCEPT RDL 120 TO VIDAD, THEN TRACK 025°  
TO INTERCEPT RDL 065 TO LUTMO

**FOR KIKAK ONE DELTA**

TRACK 085° TO INTERCEPT RDL 120 TO VIDAD, THEN TRACK 025°  
TO INTERCEPT RDL 052 TO KIKAK

SPEED(IAS)	120KT	140KT	160KT	180KT	200KT	230KT	265KT
4.9% ROC (FT/MIN)	599	698	799	899	997	1147	1324

**VERTICAL RESTRICTIONS :**

ADHERE TO VERTICAL RESTRICTIONS eg . 7000 = NOT BELOW 7000 FT ON CLIMB UNLESS SPECIFICALLY CANCELLED BY ATC

**COMMUNICATION FAILURE :**

- SQUAWK 7600
- IF UNDER PILOT NAVIGATION, MAINTAIN LAST ASSIGNED LEVEL FOR 3 MINUTES, IF NO ONWARD CLEARANCE IS RECEIVED, SUBSEQUENTLY CLIMB TO COMPLY WITH SID.
- IF UNDER RADAR VECTORED : MAINTAIN VECTOR FOR 2 MINUTES, IF BELOW MSA, CLIMB TO MSA, THEN TRACK TO INTERCEPT CLEARED OR PREVIOUSLY ASSIGNED SID TO DESTINATION

REPLACEMENT CHART