

**STANDARD DEPARTURE CHART
INSTRUMENT (SID) - ICAO**

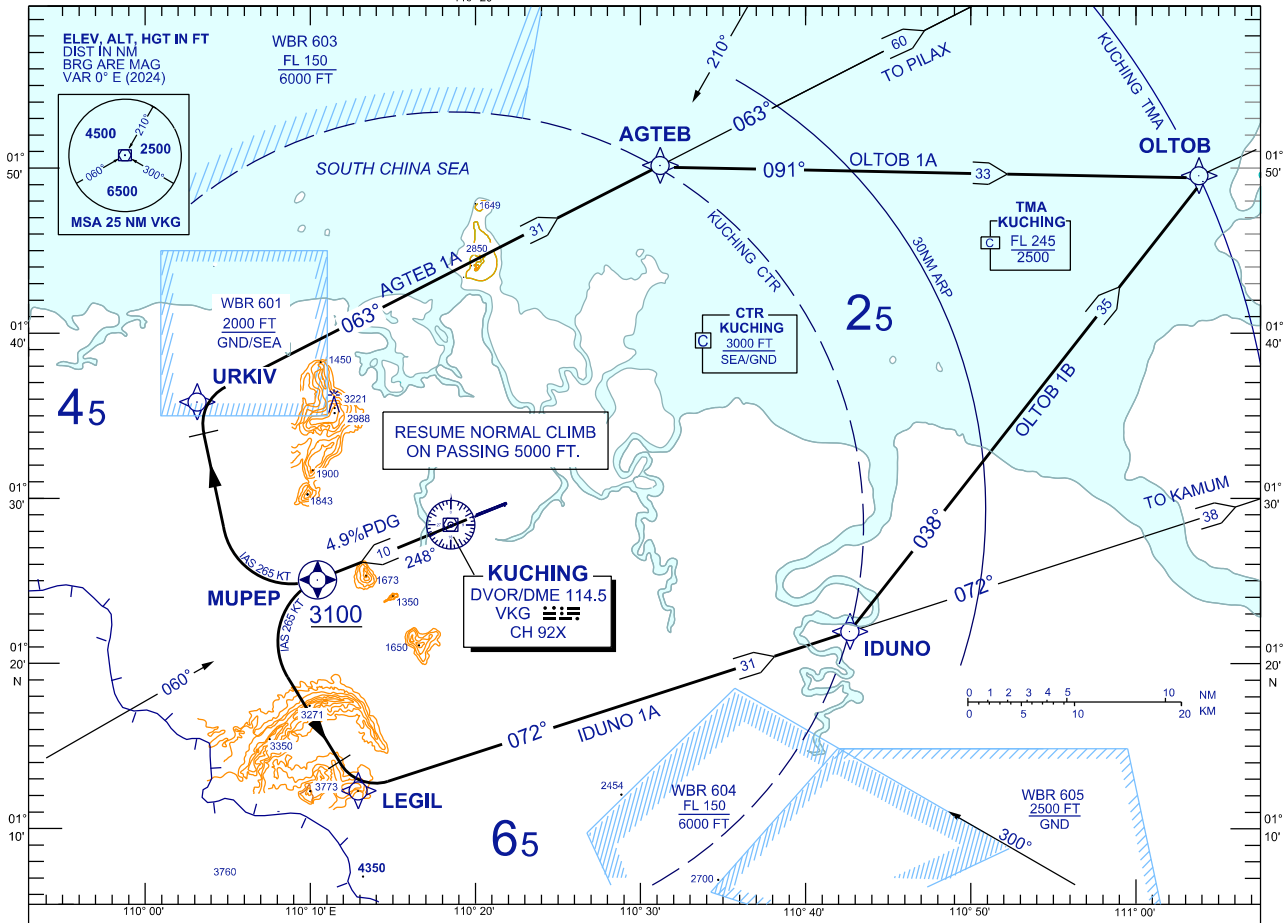
TRANSITION ALTITUDE
11,000 FT

TWR	118.1 (P)	SMC	121.9
	121.7 (S)	ATIS	128.4
APP	120.2 (P)	FIS	134.75
	123.85 (S)		
ACC	134.5 (P)		
	125.35 (S)		

**KUCHING/KUCHING (WBGG)
RWY 25 (RNAV)**

BANK ANGLE : 15° ACHIEVED

AGTEB 1A OLTOB 1B
OLTOB 1A IDUNO 1A



AGTEB ONE ALPHA DEPARTURE
OLTOB ONE ALPHA DEPARTURE
IDUNO ONE ALPHA DEPARTURE
OLTOB ONE BRAVO DEPARTURE

RWY 25 (DEPARTURES)

- CLIMB AT 4.9% PDG ON TRACK TO FLYOVER WPT MUPEP,
- AT/ABOVE 3100 FEET,

FOR AGTEB ONE ALPHA
 TRACK TO URKIV, THEN TRACK TO AGTEB
FOR OLTOB ONE ALPHA
 TRACK TO URKIV, THEN TRACK TO AGTEB
 FROM AGTEB TRACK TO OLTOB

FOR IDUNO ONE ALPHA
 TRACK TO LEGIL, THEN TRACK TO IDUNO
FOR OLTOB ONE BRAVO
 TRACK TO LEGIL, THEN TRACK TO IDUNO
 FROM IDUNO TRACK TO OLTOB

SPEED(IAS)	120KT	140KT	160KT	180KT	200KT	230KT	265KT
4.9% ROC (FT/MIN)	599	698	799	899	997	1147	1324

VERTICAL RESTRICTIONS :

ADHERE TO VERTICAL RESTRICTIONS EG . 3100 = NOT BELOW 3100 FT ON CLIMB UNLESS SPECIFICALLY CANCELLED BY ATC

COMMUNICATION FAILURE :

- SQUAWK 7600
- IF UNDER PILOT NAVIGATION, MAINTAIN LAST ASSIGNED LEVEL FOR 3 MINUTES, IF NO ONWARD CLEARANCE IS RECEIVED, SUBSEQUENTLY CLIMB TO COMPLY WITH SID.
- IF UNDER RADAR VECTORED : MAINTAIN VECTOR FOR 2 MINUTES, IF BELOW MSA, CLIMB TO MSA, THEN TRACK TO INTERCEPT CLEARED OR PREVIOUSLY ASSIGNED SID TO DESTINATION

REPLACEMENT CHART