

**STANDARD DEPARTURE CHART  
INSTRUMENT (SID) - ICAO**

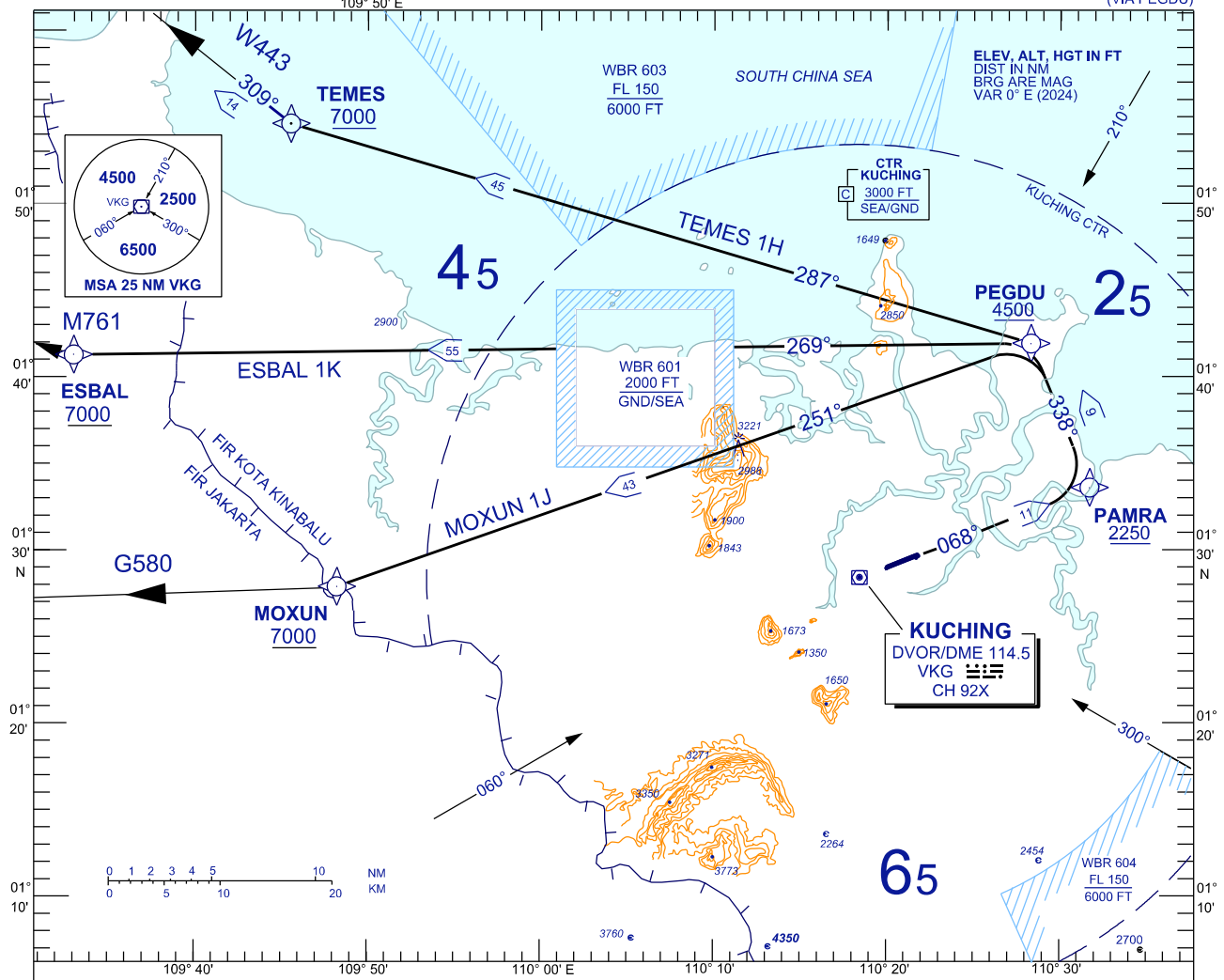
BANK ANGLE : 15° ACHIEVED

TRANSITION ALTITUDE  
11,000 FT

TWR	118.1 (P)	SMC	121.9
APP	120.2 (P)	ATIS	128.4
	123.85 (S)	FIS	134.75
ACC	134.5 (P)		
	125.35 (S)		

**KUCHING/KUCHING (WBGG)  
RWY 07 ( RNAV )**

ESBAL 1K DEP    MOXUN 1J DEP  
TEMES 1H DEP  
(VIA PEGDU)



**RWY 07 (LEFT TURN)**  
CLIMB ON TRACK TO PAMRA, THEN TURN LEFT

**TEMES ONE HOTEL DEPARTURE**  
FOR TEMES ONE HOTEL  
TRACK TO PEGDU, THEN TRACK TO TEMES

**ESBAL ONE KILO DEPARTURE**  
FOR ESBAL ONE KILO  
TRACK TO PEGDU, THEN TRACK TO ESBAL

**MOXUN ONE JULIET DEPARTURE**  
FOR MOXUN ONE JULIET  
TRACK TO PEGDU, THEN TRACK TO MOXUN

**VERTICAL RESTRICTIONS :**  
ADHERE TO VERTICAL RESTRICTIONS eg . 7000 = NOT BELOW 7000 FT ON CLIMB UNLESS SPECIFICALLY CANCELLED BY ATC

**COMMUNICATION FAILURE :**

- SQUAWK 7600
- IF UNDER PILOT NAVIGATION, MAINTAIN LAST ASSIGNED LEVEL FOR 3 MINUTES, IF NO ONWARD CLEARANCE IS RECEIVED, SUBSEQUENTLY CLIMB TO COMPLY WITH SID.
- IF UNDER RADAR VECTORED : MAINTAIN VECTOR FOR 2 MINUTES, IF BELOW MSA, CLIMB TO MSA, THEN TRACK TO INTERCEPT CLEARED OR PREVIOUSLY ASSIGNED SID TO DESTINATION

REPLACEMENT CHART