

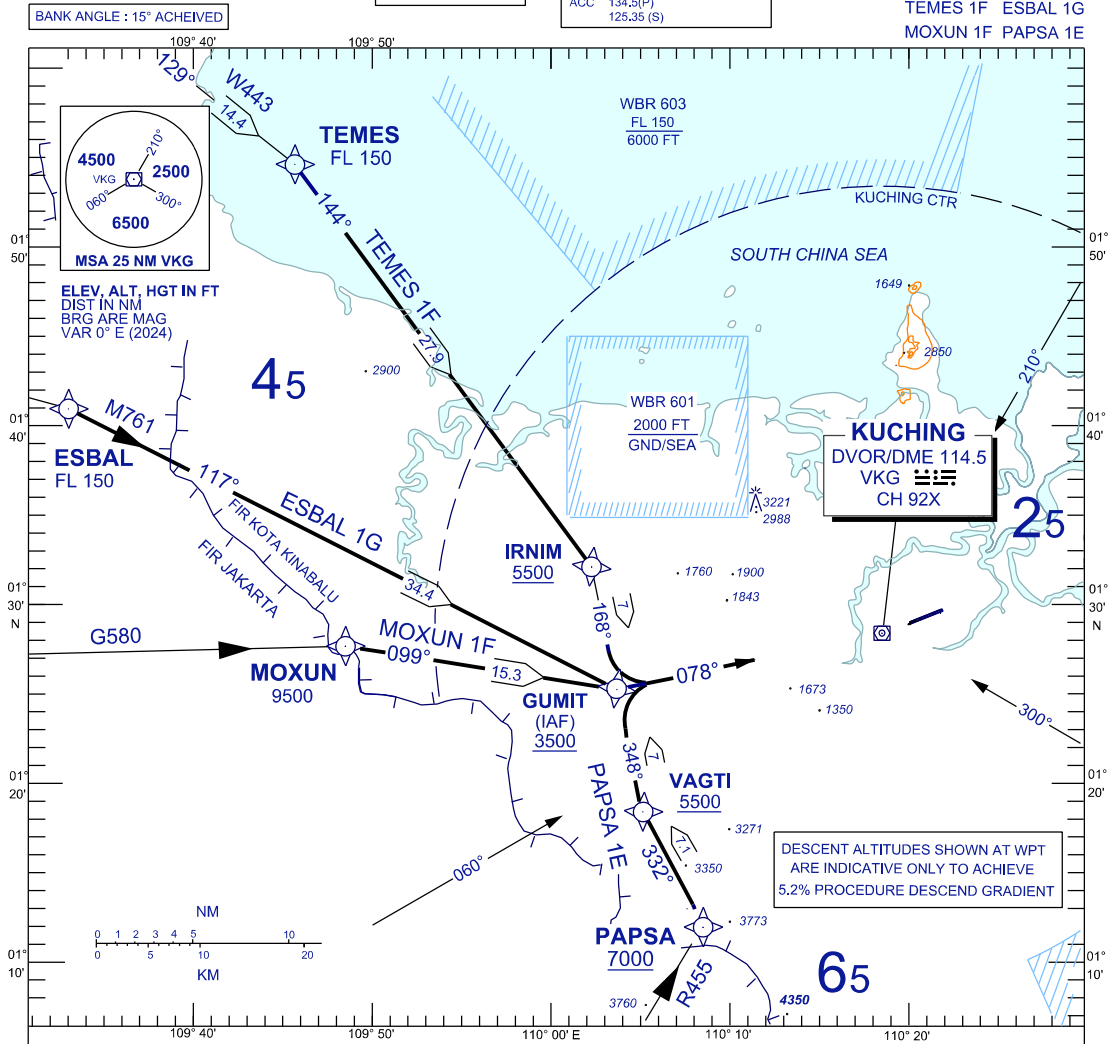
**STANDARD ARRIVAL CHART  
INSTRUMENT (STAR) - ICAO**

TRANSITION ALTITUDE  
11,000 FT

TWR	118.1 (P)	SMC	121.9
	121.7 (S)	ATIS	128.4
APP	120.2 (P)	FIS	134.75
	123.85 (S)		
ACC	134.5 (P)		
	125.35 (S)		

**KUCHING/KUCHING (WBGG)  
RWY 07 (RNAV)**

TEMES 1F ESBAL 1G  
MOXUN 1F PAPSA 1E



**ARRIVALS**

- TEMES ONE FOXTROT** : FROM TEMES TRACK TO IRNIM, THEN TRACK TO GUMIT, INTERCEPT RDL 258 VKG, FOR VOR Z RWY 07 APPROACH.
- ESBAL ONE GOLF** : FROM ESBAL TRACK TO GUMIT, INTERCEPT RDL 258 VKG, FOR VOR Z RWY 07 APPROACH.
- MOXUN ONE FOXTROT** : FROM MOXUN TRACK TO GUMIT, INTERCEPT RDL 258 VKG, FOR VOR Z RWY 07 APPROACH.
- PAPSA ONE ECHO** : FROM PAPSA TRACK TO VAGTI, THEN TRACK TO GUMIT, INTERCEPT RDL 258 VKG, FOR VOR Z RWY 07 APPROACH.

**VERTICAL RESTRICTIONS :**

ADHERE TO VERTICAL RESTRICTIONS eg . 5500 = NOT BELOW 5500 FT ON DESCENT UNLESS SPECIFICALLY CANCELLED BY ATC

**COMMUNICATIONS FAILURE :**

- \* SQUAWK 7600
- \* IF UNDER PILOT NAVIGATION, CONTINUE ON STAR AND LAND
- \* IF UNDER RADAR VECTORED, MAINTAIN VECTOR FOR 1 MINUTE, IF BELOW MSA, CLIMB TO MSA, THEN TRACK TO INTERCEPT CLEARED OR PREVIOUSLY ASSIGNED STAR AND LAND

REPLACEMENT CHART