

**STANDARD DEPARTURE CHART
INSTRUMENT (SID) - ICAO**

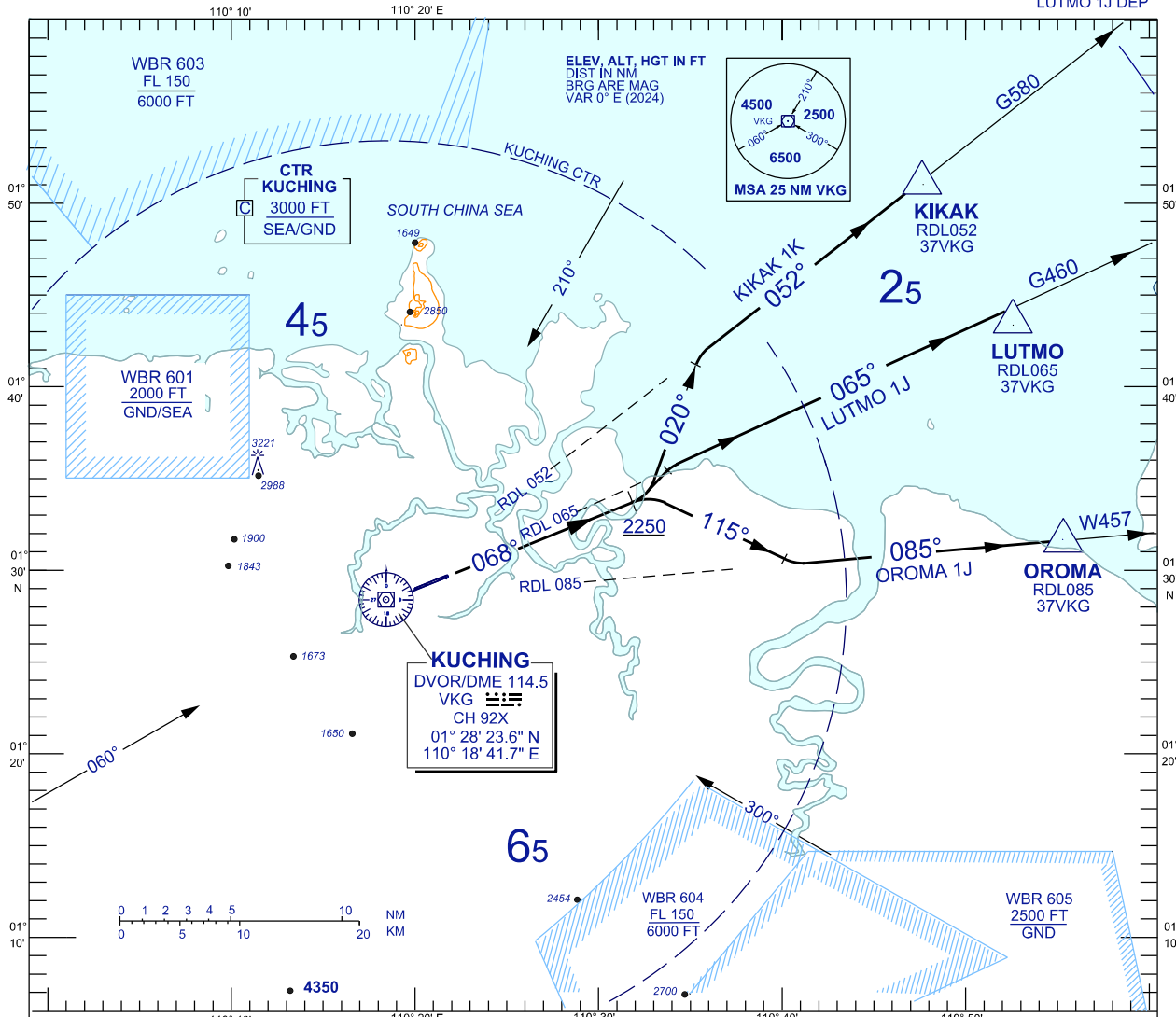
**KUCHING/KUCHING (WBGG)
RWY 07**

TRANSITION ALTITUDE
11,000 FT

TWR	118.1 (P)	SMC	121.9
	121.7 (S)	ATIS	128.4
APP	120.2 (P)	FIS	134.75
	123.85 (S)		
ACC	134.5(P)		
	125.35 (S)		

OROMA 1J DEP KIKAK 1K DEP
LUTMO 1J DEP

BANK ANGLE : 15° ACHEIVED



RWY 07 DEP (RIGHT / LEFT TURN)
CLIMB ON TRACK 068°. AT/ABOVE 2250 FEET,

KIKAK ONE KILO DEPARTURE **FOR KIKAK**
TRACK 020°, TO INTERCEPT RDL 052 TO KIKAK

LUTMO ONE JULIET DEPARTURE **FOR LUTMO**
INTERCEPT RDL 065 TO LUTMO

OROMA ONE JULIET DEPARTURE **FOR OROMA**
TURN RIGHT, TRACK 115° INTERCEPT RDL 085 TO OROMA

VERTICAL RESTRICTIONS :
ADHERE TO VERTICAL RESTRICTIONS eg . 2250 = NOT BELOW 2250 FT ON CLIMB UNLESS SPECIFICALLY CANCELLED BY ATC

COMMUNICATION FAILURE :

- SQUAWK 7600
- IF UNDER PILOT NAVIGATION, MAINTAIN LAST ASSIGNED LEVEL FOR 3 MINUTES, IF NO ONWARD CLEARANCE IS RECEIVED, SUBSEQUENTLY CLIMB TO COMPLY WITH SID.
- IF UNDER RADAR VECTORING : MAINTAIN VECTOR FOR 2 MINUTES, IF BELOW MSA, CLIMB TO MSA, THEN TRACK TO INTERCEPT CLEARED OR PREVIOUSLY ASSIGNED SID TO DESTINATION

REPLACEMENT CHART