

**STANDARD ARRIVAL CHART
INSTRUMENT (STAR) - ICAO**

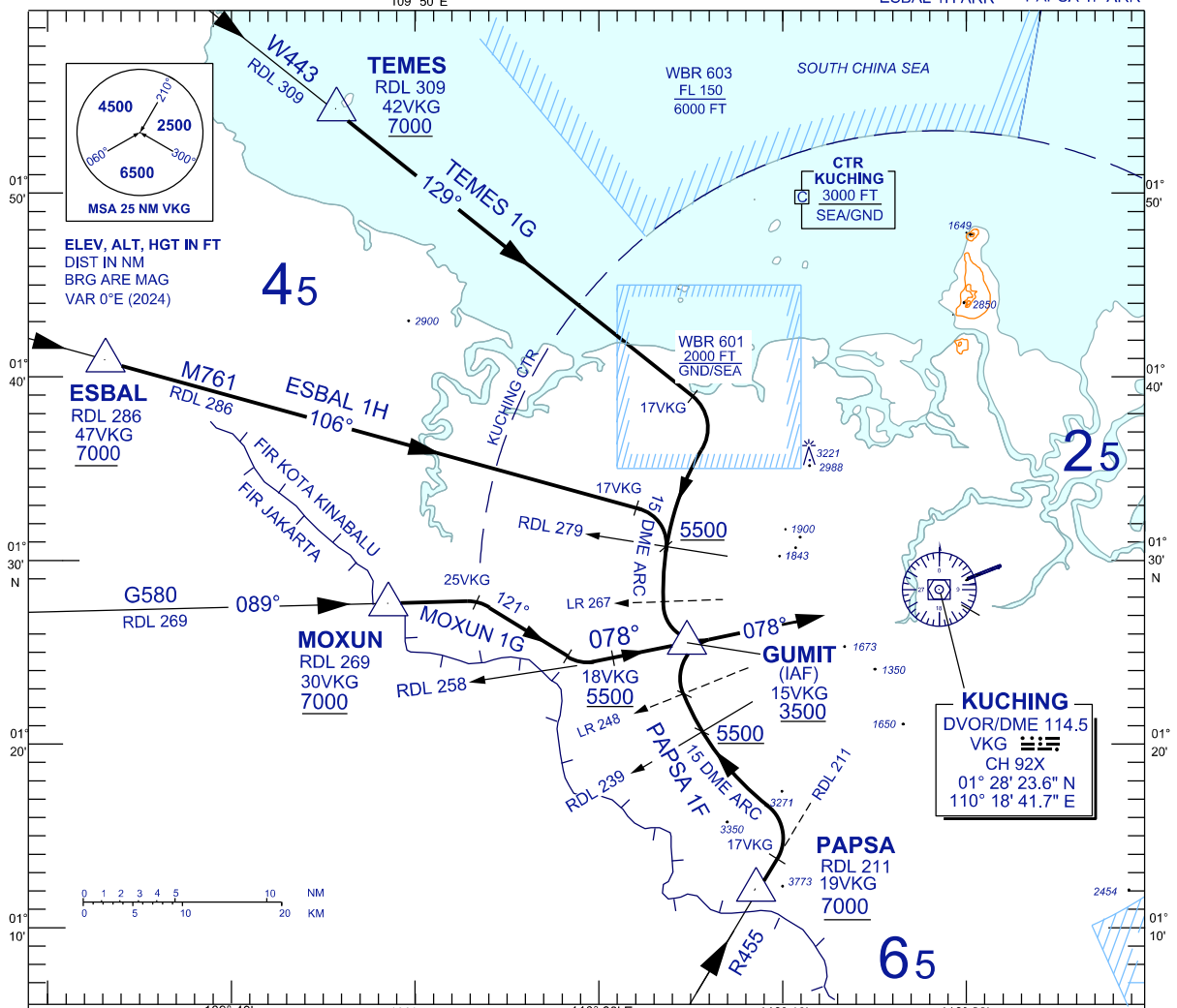
**KUCHING/KUCHING (WBGG)
RWY 07**

TWR	118.1 (P)	SMC	121.9
	121.7 (S)	ATIS	128.4
APP	120.2 (P)	FIS	134.75
	123.85 (S)		
ACC	134.5 (P)		
	125.35 (S)		

TRANSITION ALTITUDE
11,000 FT

BANK ANGLE : 25° OR 3°/SEC

TEMES 1G ARR MOXUN 1G ARR
ESBAL 1H ARR PAPSA 1F ARR



ARRIVALS

TEMES ONE GOLF ARRIVAL

- FROM TEMES TRACK 129° VKG VOR INBOUND.
- AT 17 DME VKG, TURN RIGHT TRACK ON 15 DME ARC.
- ON CROSSING LR 267, TURN LEFT
- INTERCEPT RDL 258 VKG FOR VOR z RWY 07

ESBAL ONE HOTEL ARRIVAL

- FROM ESBAL TRACK 106° VKG VOR INBOUND.
- AT 17 DME VKG, TURN RIGHT TRACK ON 15 DME ARC.
- ON CROSSING LR 267, TURN LEFT
- INTERCEPT RDL 258 VKG FOR VOR z RWY 07

MOXUN ONE GOLF ARRIVAL

- FROM MOXUN TRACK 089° VKG VOR INBOUND.
- AT 25 DME VKG, TURN RIGHT TRACK 121°,
- INTERCEPT RDL 258 VKG FOR VOR z RWY 07

PAPSA ONE FOXTROT ARRIVAL

- FROM PAPSA TRACK 031° VKG VOR INBOUND.
- AT 17 DME VKG, TURN LEFT TRACK ON 15 DME ARC.
- ON CROSSING LR 248, TURN RIGHT
- INTERCEPT RDL 258 VKG FOR VOR z RWY 07

VERTICAL RESTRICTIONS :

ADHERE TO VERTICAL RESTRICTIONS eg. 5500 = NOT BELOW 5500 FT ON DESCENT UNLESS SPECIFICALLY CANCELLED BY ATC.

COMMUNICATIONS FAILURE :

- * SQUAWK 7600
- * IF UNDER PILOT NAVIGATION, CONTINUE ON STAR AND LAND
- * IF UNDER RADAR VECTORED, MAINTAIN VECTOR FOR 1 MINUTE, IF BELOW MSA, CLIMB TO MSA, THEN TRACK TO INTERCEPT CLEARED OR PREVIOUSLY ASSIGNED STAR AND LAND

REPLACEMENT CHART