

**STANDARD DEPARTURE CHART
INSTRUMENT (SID) - ICAO**

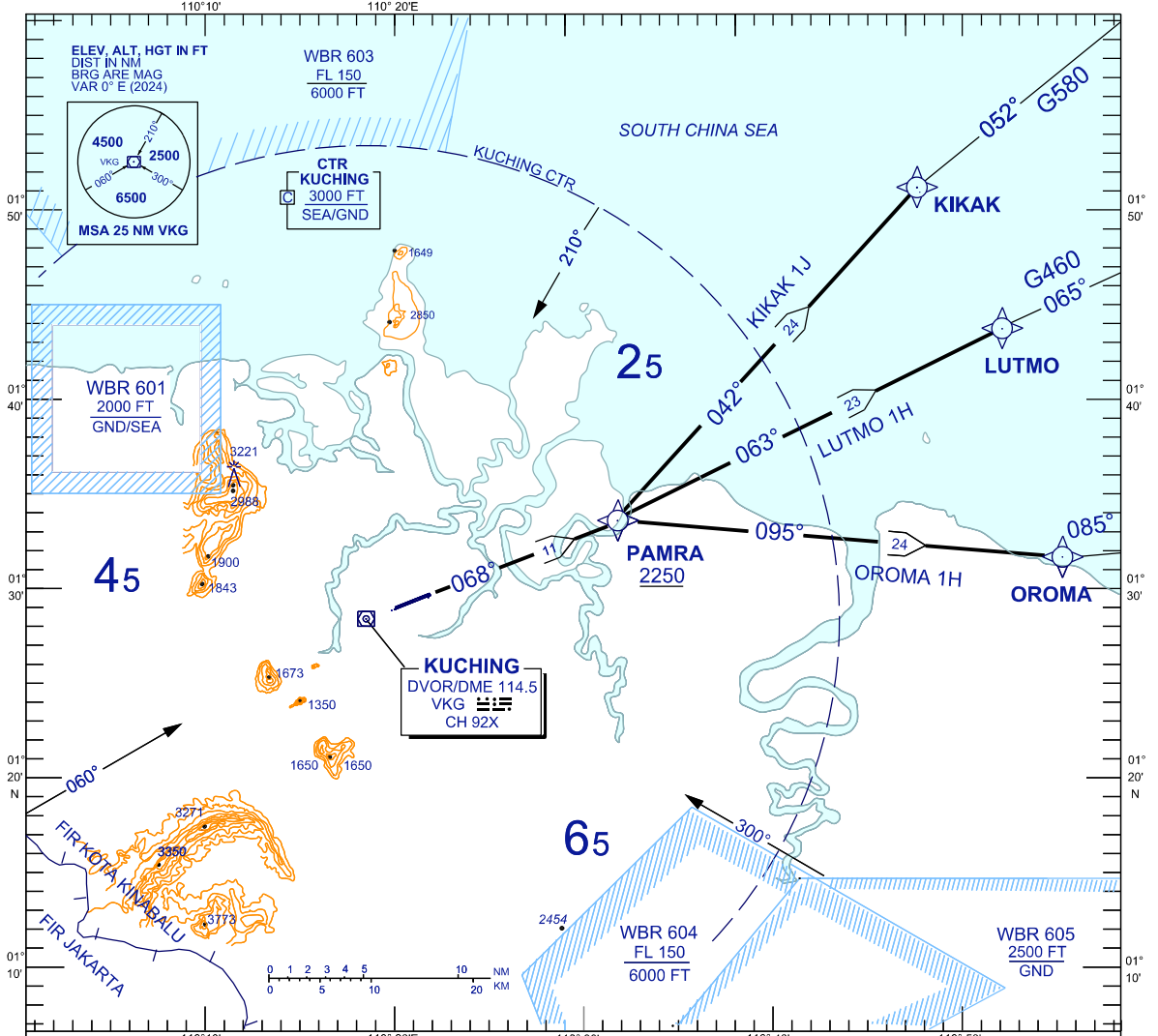
TWR	118.1 (P)	SMC	121.9
	121.7 (S)	ATIS	128.4
APP	120.2 (P)	FIS	134.75
	123.85 (S)		
ACC	134.5 (P)		
	125.35 (S)		

**KUCHING/KUCHING (WBGG)
RWY 07 (RNAV)**

BANK ANGLE : 15° ACHEIVED

TRANSITION ALTITUDE
11,000 FT

OROMA 1H DEP LUTMO 1H DEP
KIKAK 1J DEP



RWY 07 (RIGHT / LEFT TURN)

KIKAK ONE JULIET DEPARTURE
CLIMB ON TRACK TO PAMRA,
FOR KIKAK
TURN LEFT, TRACK TO KIKAK

LUTMO ONE HOTEL DEPARTURE
FOR LUTMO
TRACK DIRECT TO LUTMO

OROMA ONE HOTEL DEPARTURE
FOR OROMA
TURN RIGHT, TRACK TO OROMA

VERTICAL RESTRICTIONS :
ADHERE TO VERTICAL RESTRICTIONS eg . 2250 = NOT BELOW 2250 FT ON CLIMB UNLESS SPECIFICALLY CANCELLED BY ATC

COMMUNICATION FAILURE :

- SQUAWK 7600
- IF UNDER PILOT NAVIGATION, MAINTAIN LAST ASSIGNED LEVEL FOR 3 MINUTES, IF NO ONWARD CLEARANCE IS RECEIVED, SUBSEQUENTLY CLIMB TO COMPLY WITH SID.
- IF UNDER RADAR VECTORED : MAINTAIN VECTOR FOR 2 MINUTES, IF BELOW MSA, CLIMB TO MSA, THEN TRACK TO INTERCEPT CLEARED OR PREVIOUSLY ASSIGNED SID TO DESTINATION

REPLACEMENT CHART