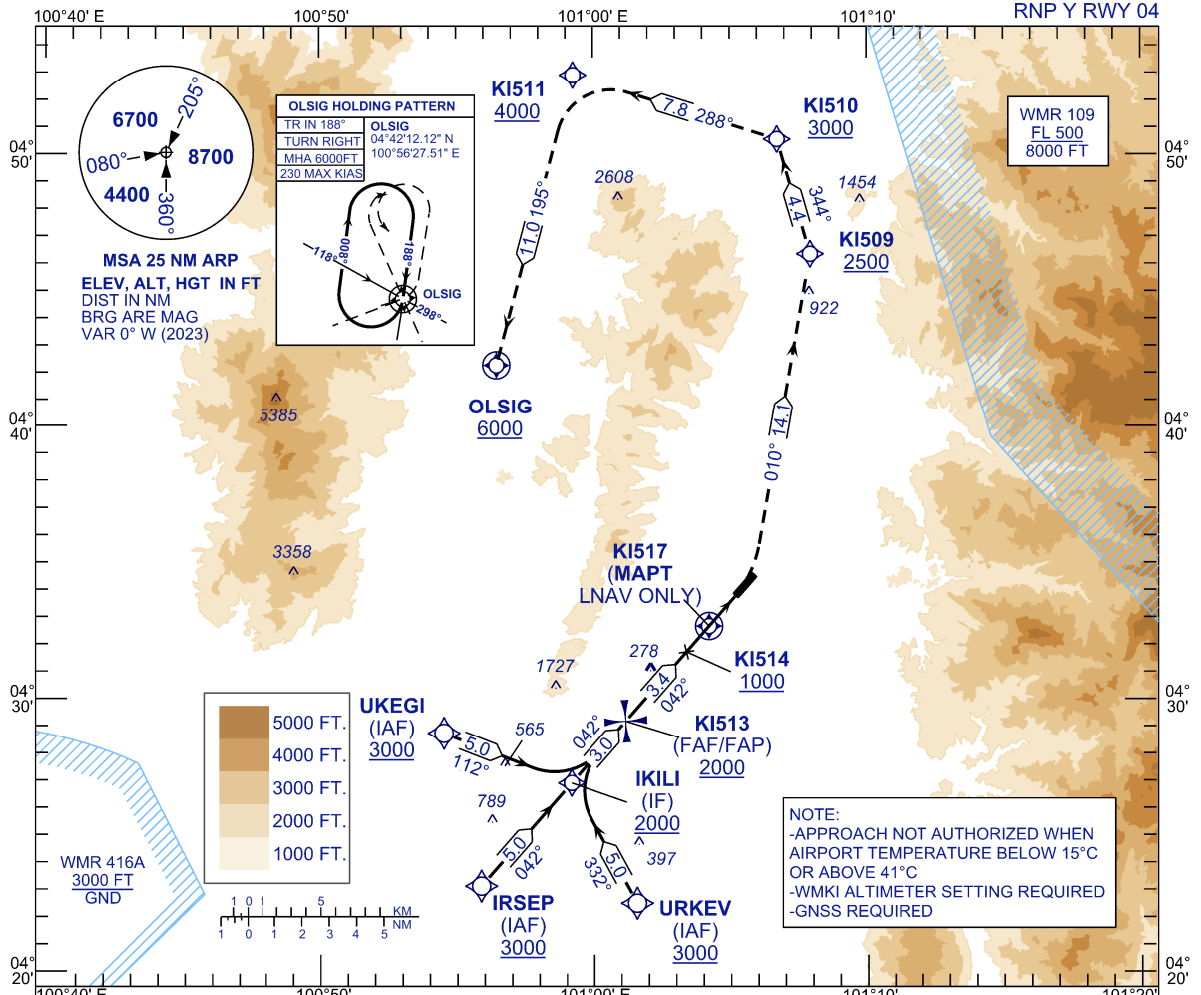


**INSTRUMENT
APPROACH
CHART - ICAO**

AERODROME ELEV 131 FT
HEIGHTS RELATED TO
THR RWY 04 - ELEV 131 FT

TWR	122.10
SMC	121.60
ATIS	127.05

**IPOH/SULTAN
AZLAN SHAH (WMKI)**



TCH 53
VPA 2.8°

MISSED APPROACH
CLIMB TO 5000ft OR ABOVE VIA RNP Y
MISSED APCH TRACK TO CLSIG
OR AS DIRECTED BY ATC

CAUTION
MISSED APPROACH SPEED
MAX 185 KIAS

THR ELEV 131
TO THR 04 (NM)

TRANSITION LEVEL FL 130
TRANSITION ALT 11000

NOTE:
-APPROACH NOT AUTHORIZED WHEN
AIRPORT TEMPERATURE BELOW 15°C
OR ABOVE 41°C
-WMKI ALTIMETER SETTING REQUIRED
-GNSS REQUIRED

CATEGORY OF AIRCRAFT	OCA (H)			
	A	B	C	D
LNAV ONLY	510 (379)			
LNAV/VNAV	615 (484)	634 (503)	643 (512)	654 (523)

DIST THR / RW04	NM	6.1	5.1	4.1	3.1	2.1	1.1
ALTITUDE	FT	2000	1700	1402	1104	807	510

GROUND SPEED (GS)	KT	80	100	120	140	160	180
FAF04-MA04(4.6 NM)	MIN:SEC	3:28	2:46	2:18	1:59	1:44	1:32
RATE OF DESCEND (318.4 FT/NM)	FT/MIN	400	500	590	690	790	890

NEW CHART