

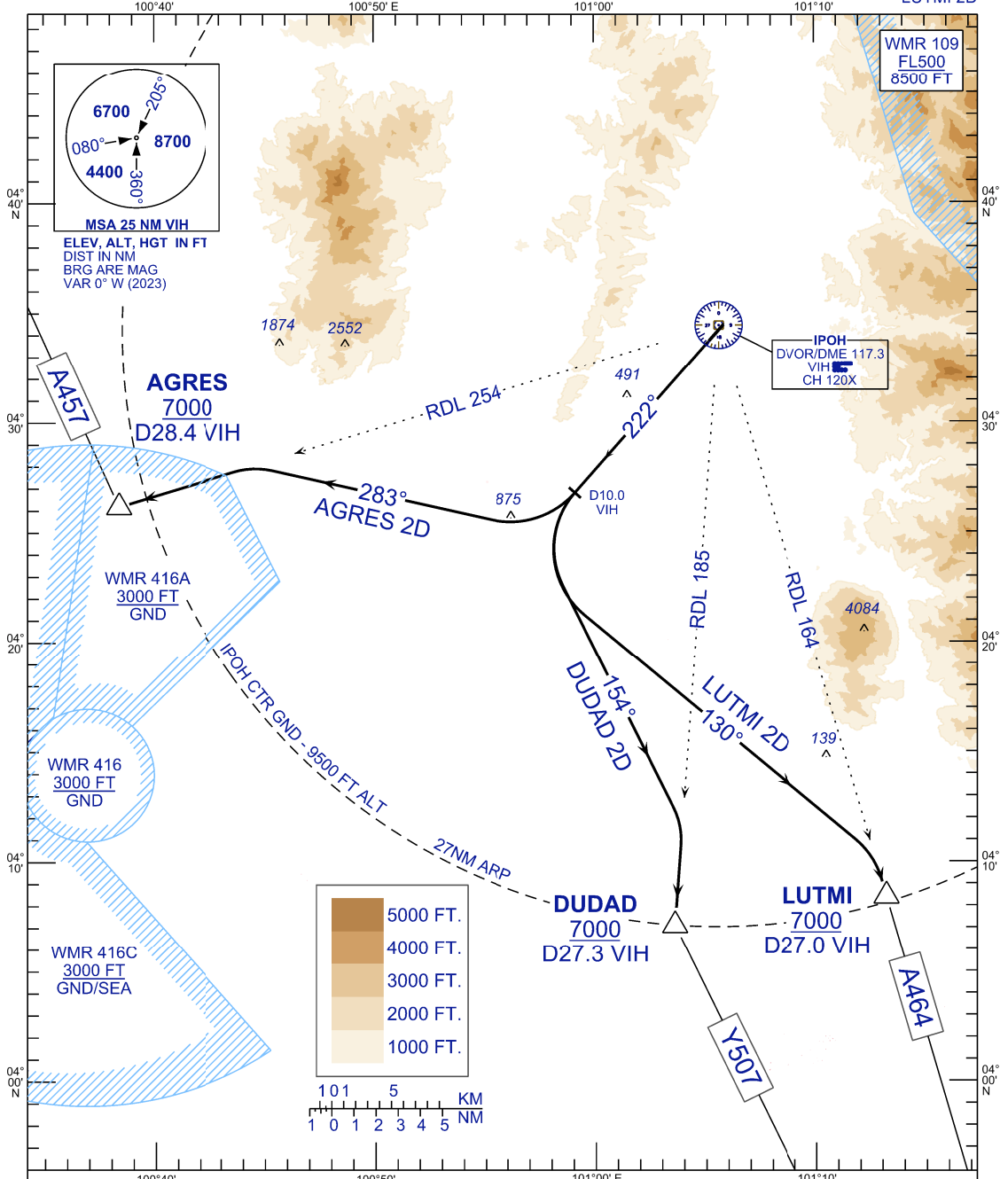
**STANDARD DEPARTURE CHART  
INSTRUMENT (SID) - ICAO**

TWR	122.10
SMC	121.60
ATIS	127.05

**IPOH/SULTAN  
AZLAN SHAH (WMKI)**

RWY 22  
AGRES 2D DUDAD 2D  
LUTMI 2D

TRANSITION ALTITUDE  
11000 FT



**COMMUNICATION FAILURE:**

- \* SQUAWK 7600
- \* IF UNDER PILOT NAVIGATION, MAINTAIN LAST ASSIGNED LEVEL FOR 3 MINUTES, IF NO ONWARD CLEARANCE IS RECEIVED SUBSEQUENTLY CLIMB TO COMPLY WITH SID
- \* IF UNDER RADAR VECTORING, MAINTAIN VECTOR FOR 2 MINUTES
- \* IF BELOW MSA, CLIMB TO MSA, THEN TRACK TO INTERCEPT CLEARED OR PREVIOUSLY ASSIGNED SID TO DESTINATION

REPLACEMENT CHART