

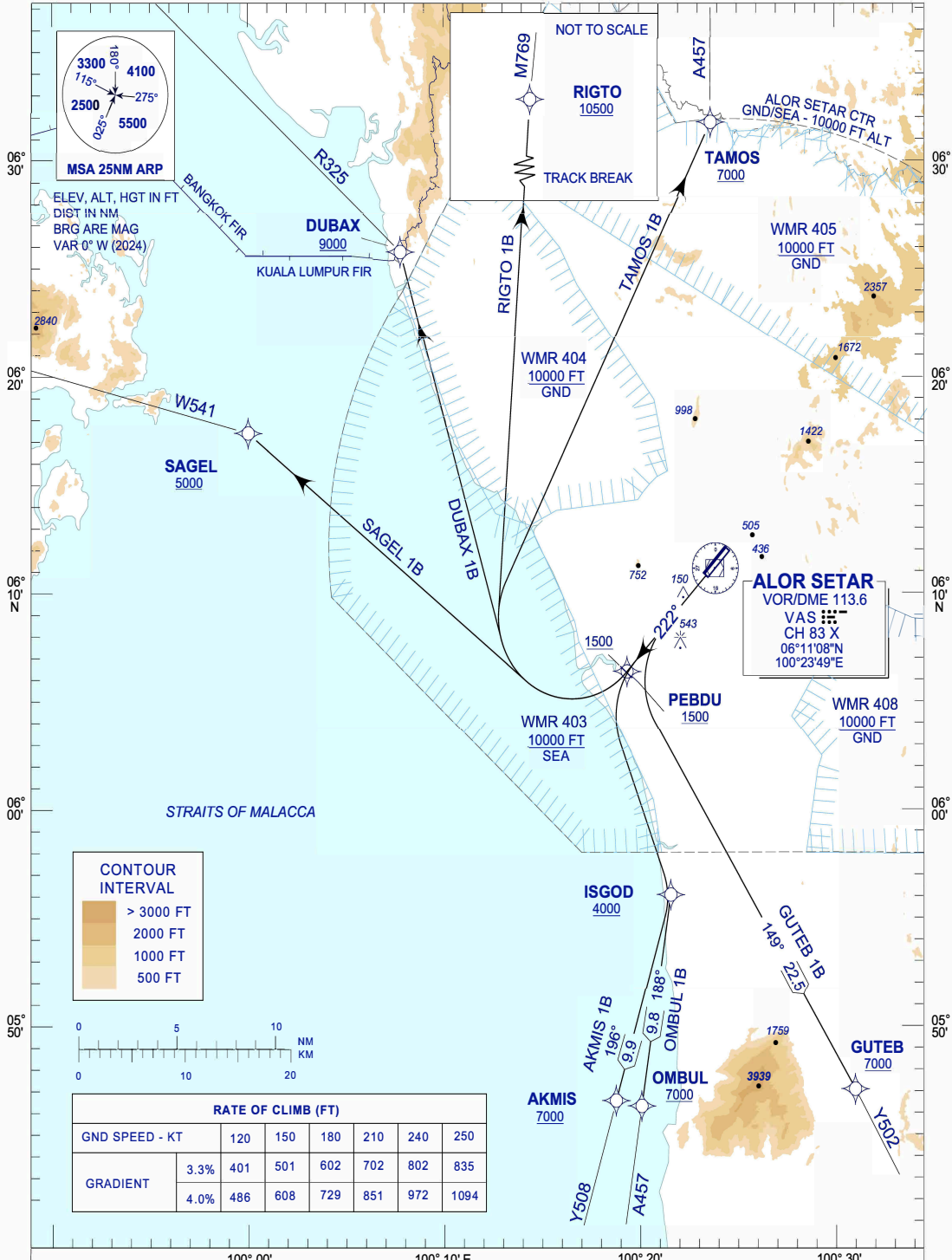
**STANDARD DEPARTURE CHART  
INSTRUMENT (SID) - ICAO**

TRANSITION ALTITUDE  
11000 FT

TWR/APP 122.3, 258.2  
121.5  
TRAINING 129.1  
SMC 121.6  
ATIS 128.65

**ALOR SETAR/  
SULTAN ABDUL HALIM (WMKA)  
RNAV (GNSS) RWY22**

TAMOS 1B RIGTO 1B DUBAX 1B  
SAGEL 1B GUTEB 1B OMBUL 1B  
AKMIS 1B



**COMMUNICATION FAILURE :**  
 SQUAWK 7600  
 • IF UNDER PILOT NAVIGATION, MAINTAIN LAST ASSIGNED LEVEL FOR 3 MINUTES, IF NO ONWARD CLEARANCE IS RECEIVED. SUBSEQUENTLY CLIMB TO COMPLY WITH SID.  
 • IF UNDER RADAR VECTORED : MAINTAIN VECTOR FOR 2 MINUTES, IF BELOW MSA, CLIMB TO MSA, THEN TRACK TO INTERCEPT CLEARED OR PREVIOUSLY ASSIGNED SID TO DESTINATION.

NEW CHART