

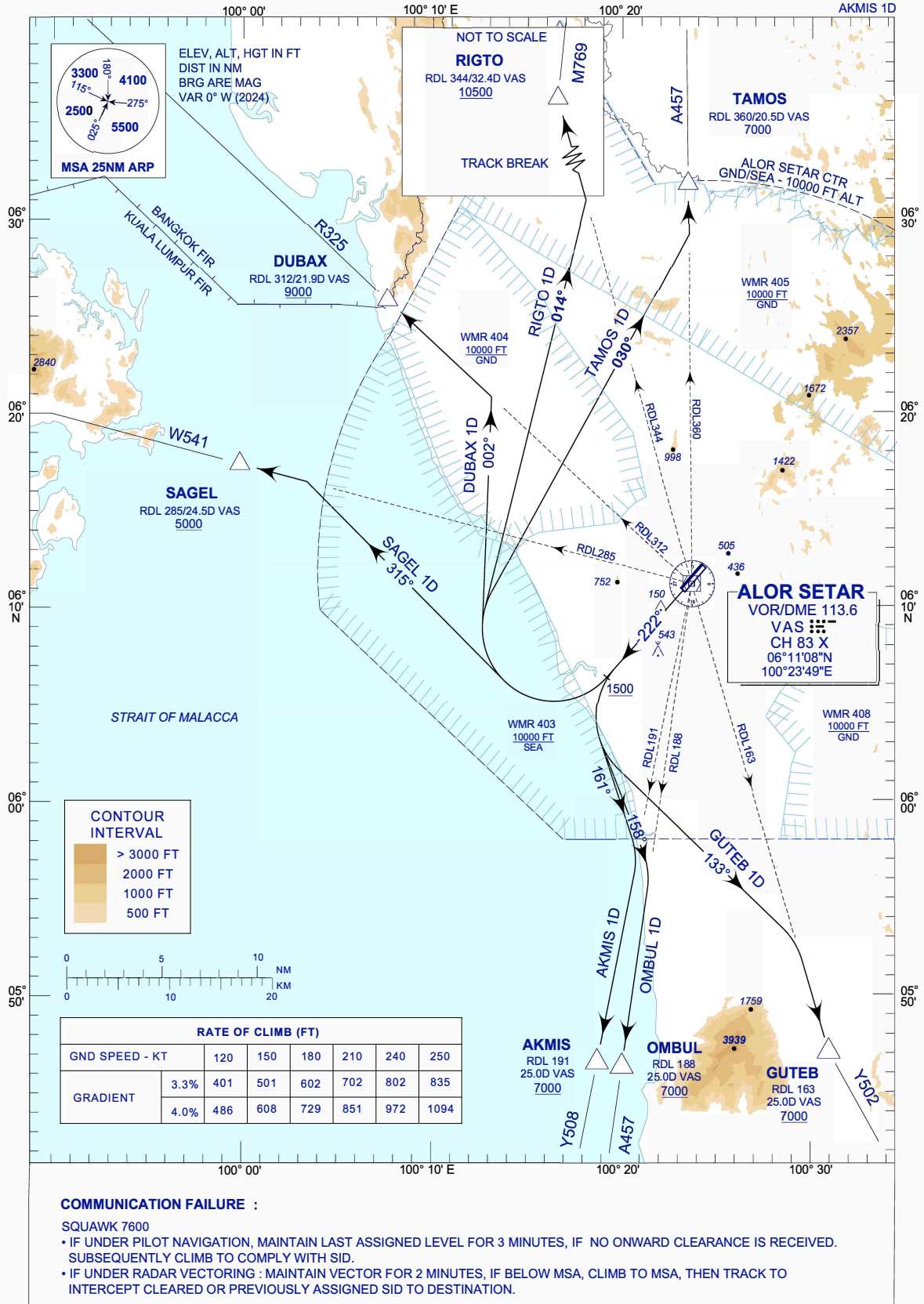
**STANDARD DEPARTURE CHART
INSTRUMENT (SID) - ICAO**

TRANSITION ALTITUDE
11000 FT

TWR/APP 122.3, 258.2
121.5
TRAINING 129.1
SMC 121.6
ATIS 128.65

**ALOR SETAR/
SULTAN ABDUL HALIM (WMKA)**
RWY 22

TAMOS 1D RIGTO 1D DUBAX 1D
SAGEL 1D GUTEB 1D OMBUL 1D
AKMIS 1D



NEW CHART