

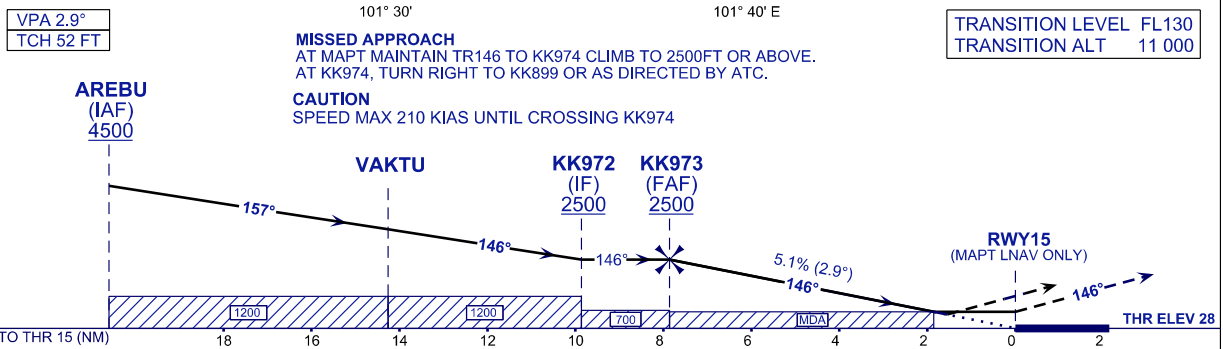
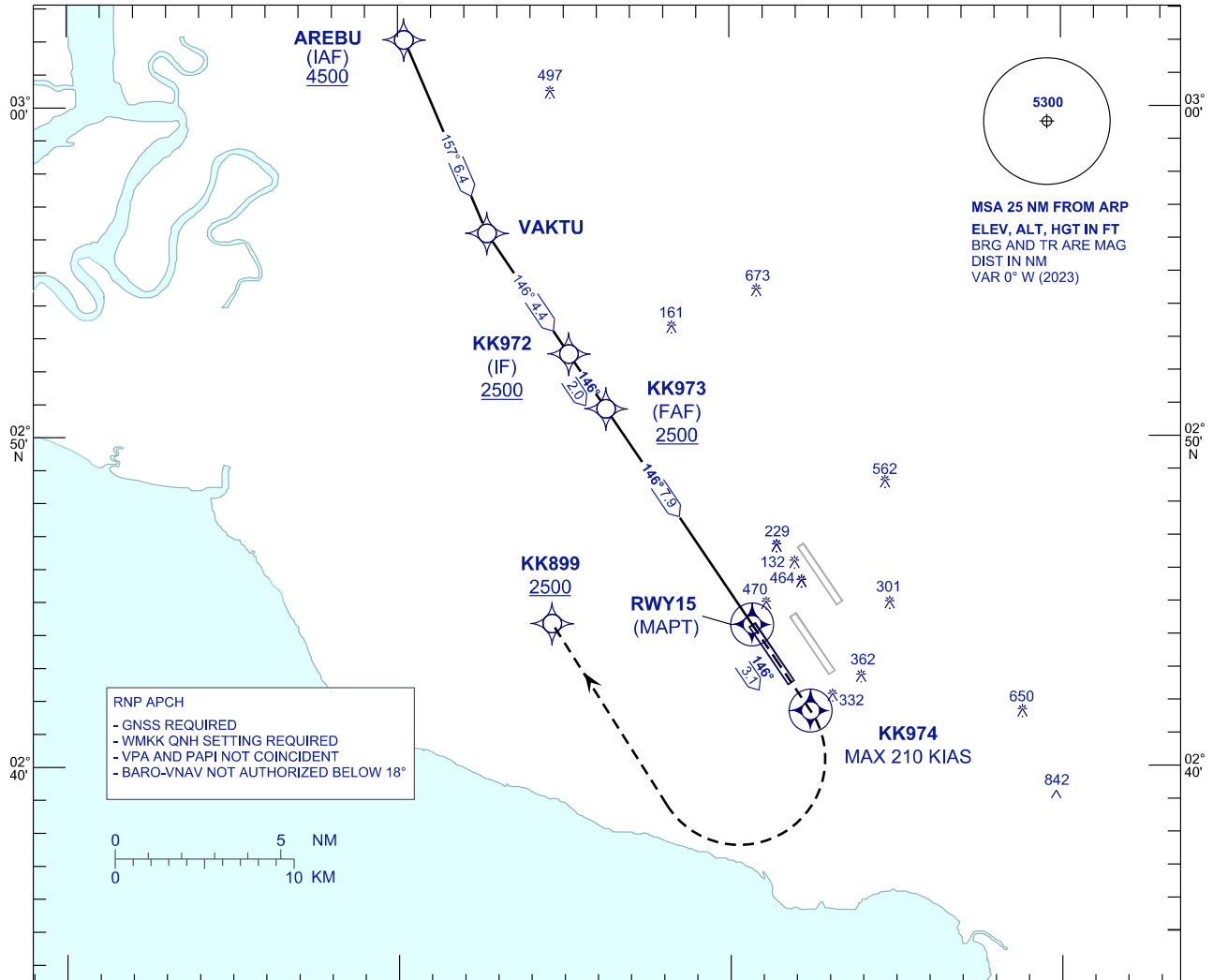
**INSTRUMENT
APPROACH
CHART - ICAO**

AERODROME ELEV 69 FT
HEIGHT RELATED TO
THR RWY 15 - ELEV 28 FT

APP	TWR	SMC	ATIS
124.20	119.80	118.05	128.05
119.45			
125.10			

**SEPANG/KL INTERNATIONAL
AIRPORT (WMKK)**

RNP X RWY 15



STRAIGHT-IN APPROACH	OCA (OCH)			
CATEGORY OF AIRCRAFT	A	B	C	D
LNAV / VNAV	556 (528)			
LNAV	650 (622)			

GROUND SPEED (GS)	KT	80	100	120	140	160	180
FAF - RWY15 (7.9 NM)	MIN:SEC	5:54	4:43	3:56	3:22	2:57	2:37
RATE OF DESCEND (5.1% / 2.9°)	FT/MIN	410	510	620	720	820	920

DIST THR/RWY15	NM	7.9	7.0	6.0	5.0	4.0	3.0	2.0	1.0
ALTITUDE	FT	2500	2235	1972	1620	1312	1004	696	388

CHANGES : IN PROFILE VIEW, AMEND MAG TRACK FM AREBU TO VAKTU TO READ AS 157°.