

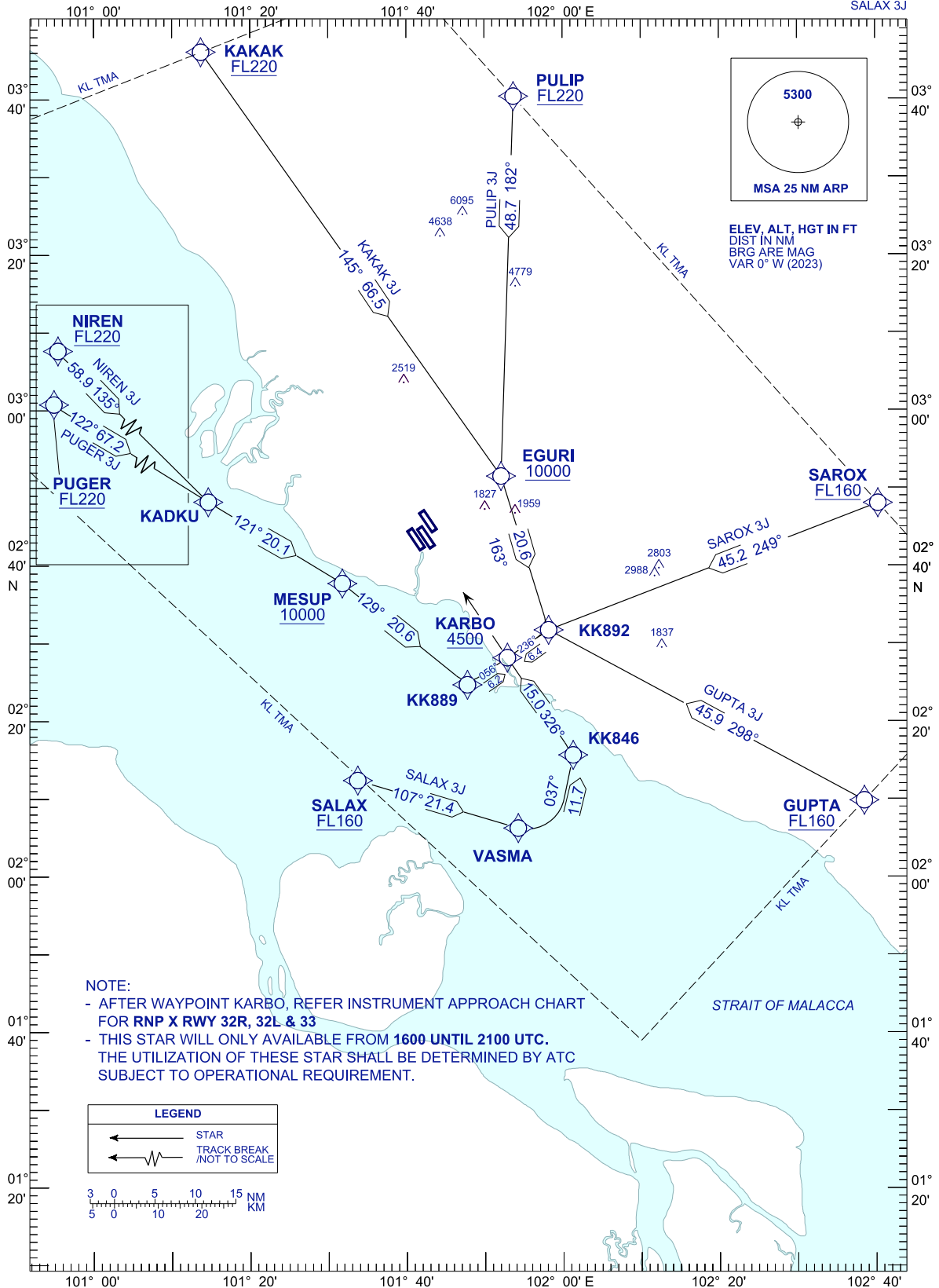
**STANDARD ARRIVAL CHART
INSTRUMENT (STAR) - ICAO**

TRANSITION ALT 11000 FT

APP	121.250	TWR	118.800
	124.200		118.500
	118.650		119.800
	125.850		
	135.750	ATIS	128.050

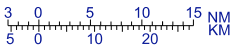
**SEPANG/KL INTERNATIONAL
AIRPORT (WMKK)
RNP 1 (GNSS) RWY 32R, 32L, 33**

PUGER 3J KAKAK 3J SAROX 3J
NIREN 3J PULIP 3J GUPTA 3J
SALAX 3J



NOTE:
 - AFTER WAYPOINT KARBO, REFER INSTRUMENT APPROACH CHART FOR RNP X RWY 32R, 32L & 33
 - THIS STAR WILL ONLY AVAILABLE FROM 1600 UNTIL 2100 UTC. THE UTILIZATION OF THESE STAR SHALL BE DETERMINED BY ATC SUBJECT TO OPERATIONAL REQUIREMENT.

LEGEND
 ← STAR
 ← TRACK BREAK (NOT TO SCALE)



CHANGES : CHANGE BEARING BETWEEN VASMA & KK846.