

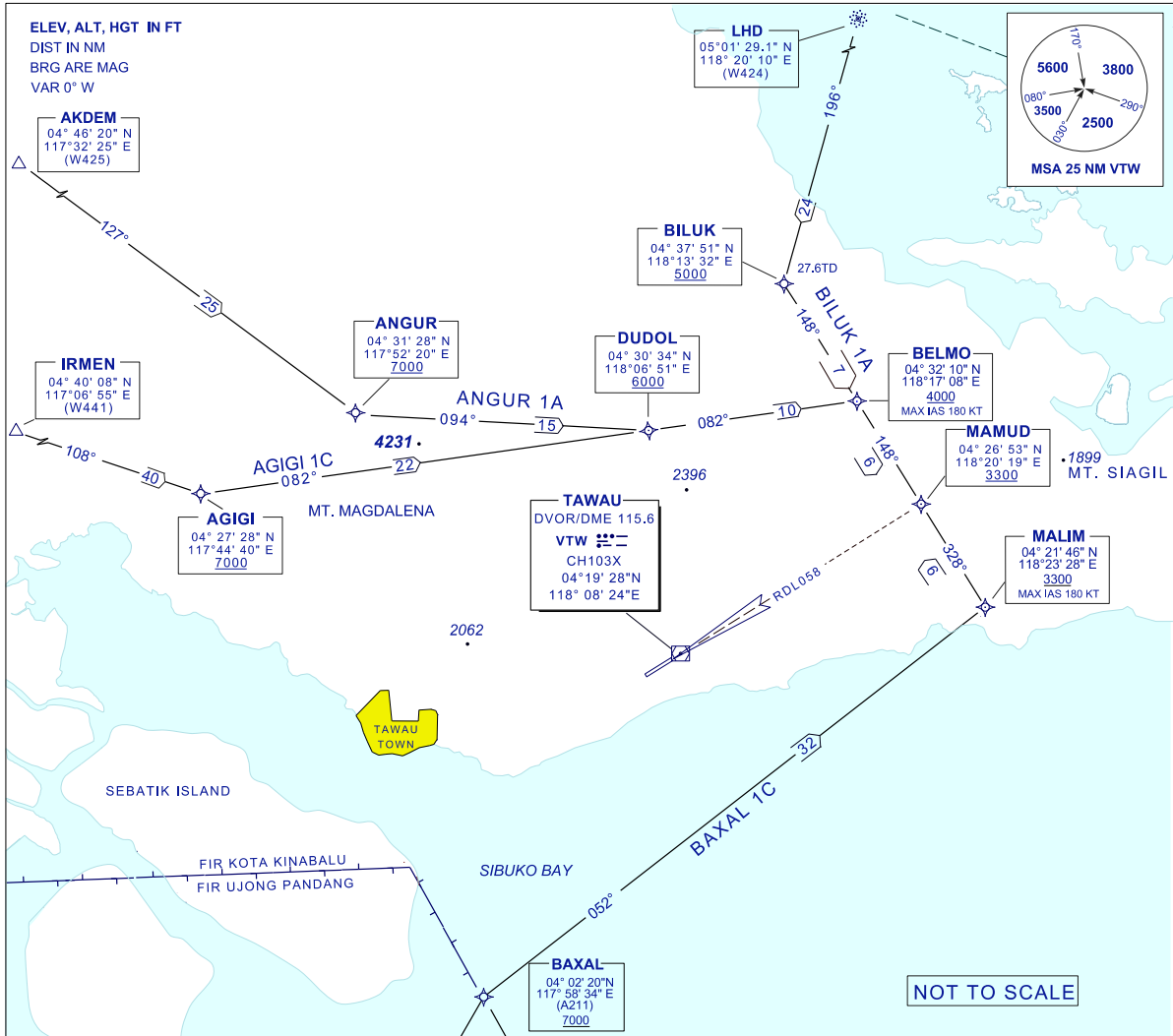
**STANDARD ARRIVAL CHART  
INSTRUMENT (STAR)**

TRANSITION ALTITUDE  
11 000 FT

SMC 121.90  
TWR 122.50  
APP 123.55  
ATIS 126.25

**TAWAU/TAWAU (WBKW)  
RWY 24 (RNAV)**

AGIGI 1C ANGUR 1A  
BILUK 1A BAXAL 1C



**AGIGI 1 CHARLIE ARRIVAL**

- FROM W441 / IRMEN TO AGIGI
- TRACK 082° TO DUDOL AND BELMO
- TURN RIGHT TRACK 148° TO MAMUD
- INTERCEPT LOC OR RDL 058

**ANGUR 1 ALPHA ARRIVAL**

- FROM W425 / AKDEM TO ANGUR
- TRACK 094° TO DUDOL
- THENCE 082° TO BELMO
- TURN RIGHT TRACK 148° TO MAMUD
- INTERCEPT LOC OR RDL 058

**BILUK 1 ALPHA ARRIVAL**

- FROM LHD/W424 TO BILUK
- TRACK 148° TO BELMO
- THENCE TO MAMUD
- INTERCEPT LOC OR RDL 058

**BAXAL 1 CHARLIE ARRIVAL**

- FROM A211/BAXAL TRACK 052° TO MALIM
- TURN LEFT TRACK 328° TO MAMUD
- INTERCEPT LOC OR RDL 058

**COMMUNICATION FAILURE :**

SET TRANSPONDER CODE 7600  
PROCEED TO MAMUD AT LAST RECEIVED OR ACKNOWLEDGED EAT OR, IF NO EAT HAS BEEN RECEIVED OR ACKNOWLEDGED AT FPL EAT DESCEND IN THE MAMUD HOLDING PATTERN TO 3300FT, CARRY OUT STANDARD INSTRUMENT APPROACH RWY24

CHANGES : AT CHART IDENTIFICATION, CHANGE AGIGI 1A TO AGIGI 1C AND BAXAL 1A TO BAXAL 1C.