

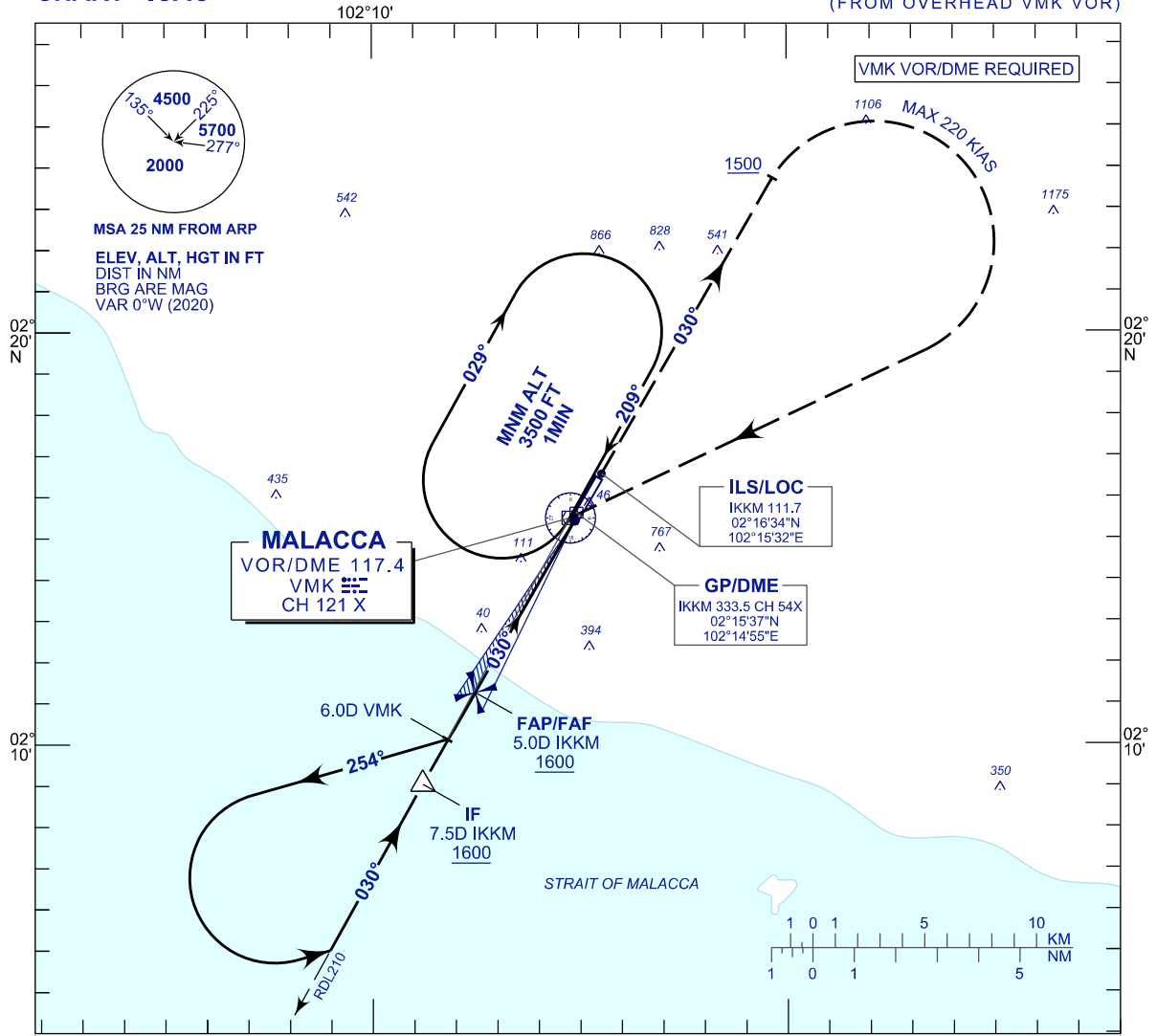
**INSTRUMENT  
APPROACH  
CHART - ICAO**

**AERODROME ELEV 39 FT**  
HEIGHTS RELATED TO  
THR RWY 03 - ELEV 18 FT

TWR	118.00
SMC	121.60
ATIS	127.45

**MALACCA/MALACCA (WMKM)**  
**ILS Y OR LOC Y RWY03**

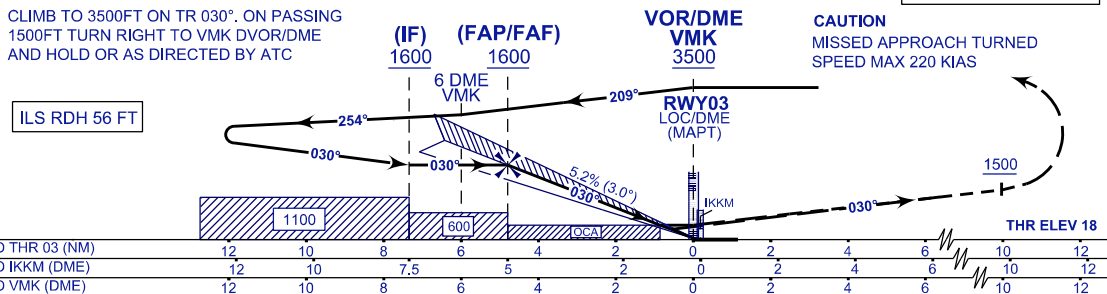
(FROM OVERHEAD VMK VOR)



**MISSED APPROACH**

CLIMB TO 3500FT ON TR 030°. ON PASSING 1500FT TURN RIGHT TO VMK DVOR/DME AND HOLD OR AS DIRECTED BY ATC

TRANSITION ALT 11 000



OCA (OCH)	A	B	C
ILS/DME (CAT I)	230 (212)	242 (224)	250 (232)
LOC/DME	420 (402)		

DIST IKKM DME	NM	5.0	4.0	3.0	2.0	1.0
DIST THR/RWY 03	NM	4.8	3.8	2.8	1.8	0.8
ALTITUDE	FT	1600	1281	963	644	325

GS	KT	80	100	120	140	160	180
FAF - RWY03 (4.8NM)	MIN:SEC	3:36	2:53	2:24	2:04	1:48	1:36
RATE OF DESCEND (318 FT/NM)	FT/MIN	420	530	630	740	840	950

CHANGES : AERODROME ELEVATION.