

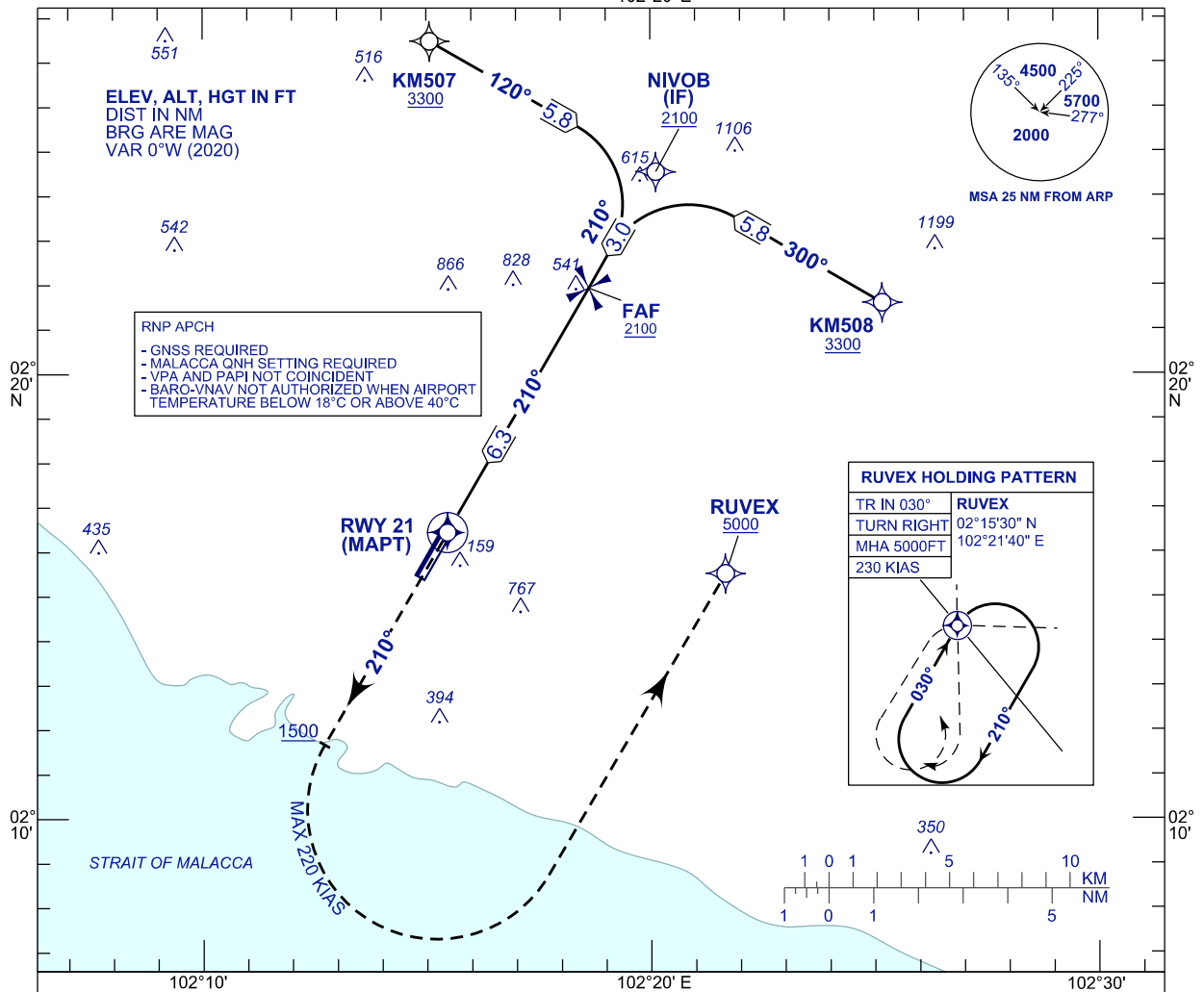
**INSTRUMENT
APPROACH
CHART - ICAO**

AERODROME ELEV 39 FT
HEIGHTS RELATED TO
THR RWY 21 - ELEV 39 FT

TWR	118.00
SMC	121.60
ATIS	127.45

MALACCA/MALACCA (WMKM)

RNP Y RWY 21



TCH 50 FT

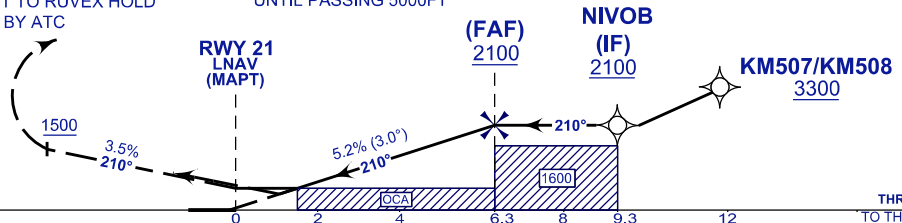
MISSED APPROACH

CLIMB ON TR 210° TO 5000FT. ON PASSING
1500FT TURN LEFT TO RUVEX HOLD
OR AS DIRECTED BY ATC

CAUTION:

- MISSED APPROACH TURNED
SPEED MAX 220 KIAS
- CLIMB GRADIENT 3.5%
UNTIL PASSING 5000FT

TRANSITION ALT 11 000



OCA (OCH)	A	B	C
LNAV	570 (531)		
LNAV / VNAV	303 (264)	316 (277)	324 (285)

DIST THR/RWY 21	NM	6.3	5.3	4.3	3.3	2.3	1.3
ALTITUDE	FT	2100	1782	1463	1145	826	508

GS	KT	80	100	120	140	160	180
FAF - RWY21 (6.3NM)	MIN:SEC	4:45	3:48	3:10	2:43	2:23	2:07
RATE OF DESCEND (318 FT/NM)	FT/MIN	420	530	630	740	840	950

CHANGES: AERODROME ELEVATION.