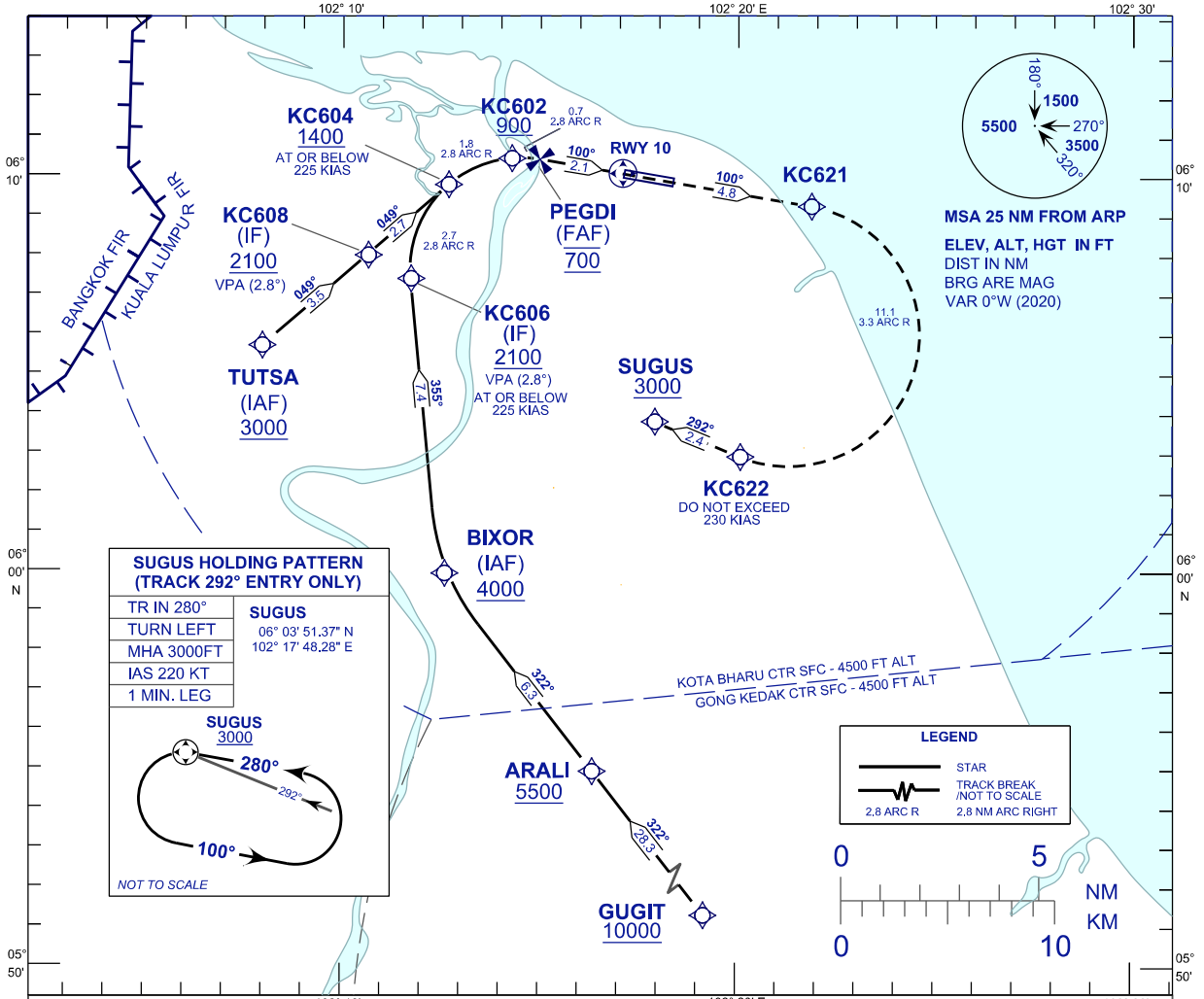


**INSTRUMENT  
APPROACH  
CHART - ICAO**

**AERODROME ELEV 16 FT**  
HEIGHT RELATED TO  
THR RWY 10 - ELEV 16 FT

APP 120.85, 130.3  
TWR 122.5  
SMC 121.6  
ATIS 128.85

**KOTA BHARU/  
SULTAN ISMAIL PETRA (WMKC)**  
RNP Z RWY 10 (AR)



**SUGUS HOLDING PATTERN  
(TRACK 292° ENTRY ONLY)**

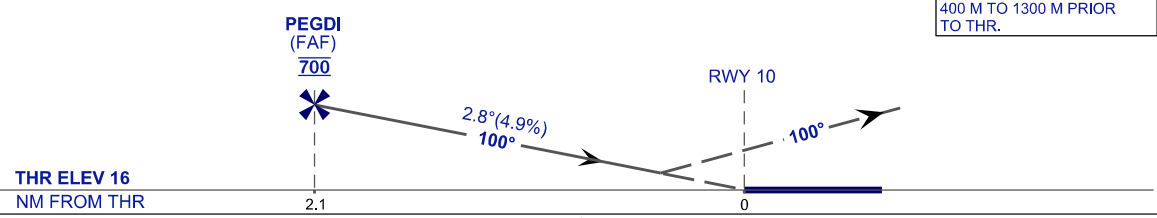
TR IN 280°	SUGUS
TURN LEFT	06° 03' 51.37" N
MHA 3000FT	102° 17' 48.28" E
IAS 220 KT	
1 MIN. LEG	

NOT TO SCALE

VPA 2.8°  
RDH 50 FT

**MISSED APPROACH**  
CLIMB TO 3000 FT ON RNP MISSED APPROACH TRACK  
TO SUGUS OR AS DIRECTED BY ATC.

TRANSITION LEVEL FL130  
TRANSITION ALT 11000 FT  
VSS PENETRATIONS FROM  
400 M TO 1300 M PRIOR  
TO THR.



THR ELEV 16  
NM FROM THR

STRAIGHT-IN APPROACH	OCA (OCH)	
CATEGORY OF AIRCRAFT	C	D
RNP (0.30)	445 (429)	
CIRCLING AND ALTERNATE N/A		

AUTHORIZATION REQUIRED

**NOTES:**

- 1) APPROACH NOT AUTHORIZED WHEN AIRPORT TEMPERATURE BELOW 18°C OR ABOVE 39°C.
- 2) RF REQUIRED.
- 3) WMKC ALTIMETER SETTING REQUIRED.
- 4) GNSS REQUIRED.
- 5) PAPI AND VERTICAL PATH ANGLE NOT COINCIDENT.
- 6) RNP 1.0 REQUIRED FROM GUGIT TO IAF.
- 7) RNP 0.3 REQUIRED FROM IAF'S TO FAF.
- 8) DUE TO GONG KEDAK CTR, MAINTAIN 4500 FT OR ABOVE UNTIL 4.5 NM TO BIXOR.

CHANGES : MAGNETIC VARIATION