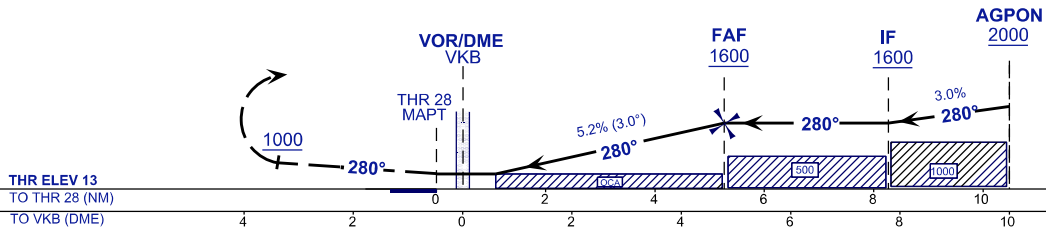


MISSED APPROACH
TRACK 280°, AT 1000 FT OR ABOVE TURN LEFT TRACK DIRECT TO VKB VOR HOLD CLIMB 3000 FT TO HOLD OR AS DIRECTED BY ATC.

TRANSITION ALT 11000
TCH 50 FT



OCA/H	A	B	C	D	DME VKB	4.8	4.0	3.0	2.0	1.1
VOR/DME	430 (414)				ALTITUDE	1600	1262	944	625	430
					GS(KT)	80	100	120	140	160
					FAF - RW28(4.8 NM)	3:57	3:10	2:38	2:16	1:59
					RATE OF DESCEND	380	480	570	670	770

CHANGES : MAGNETIC VARIATION