

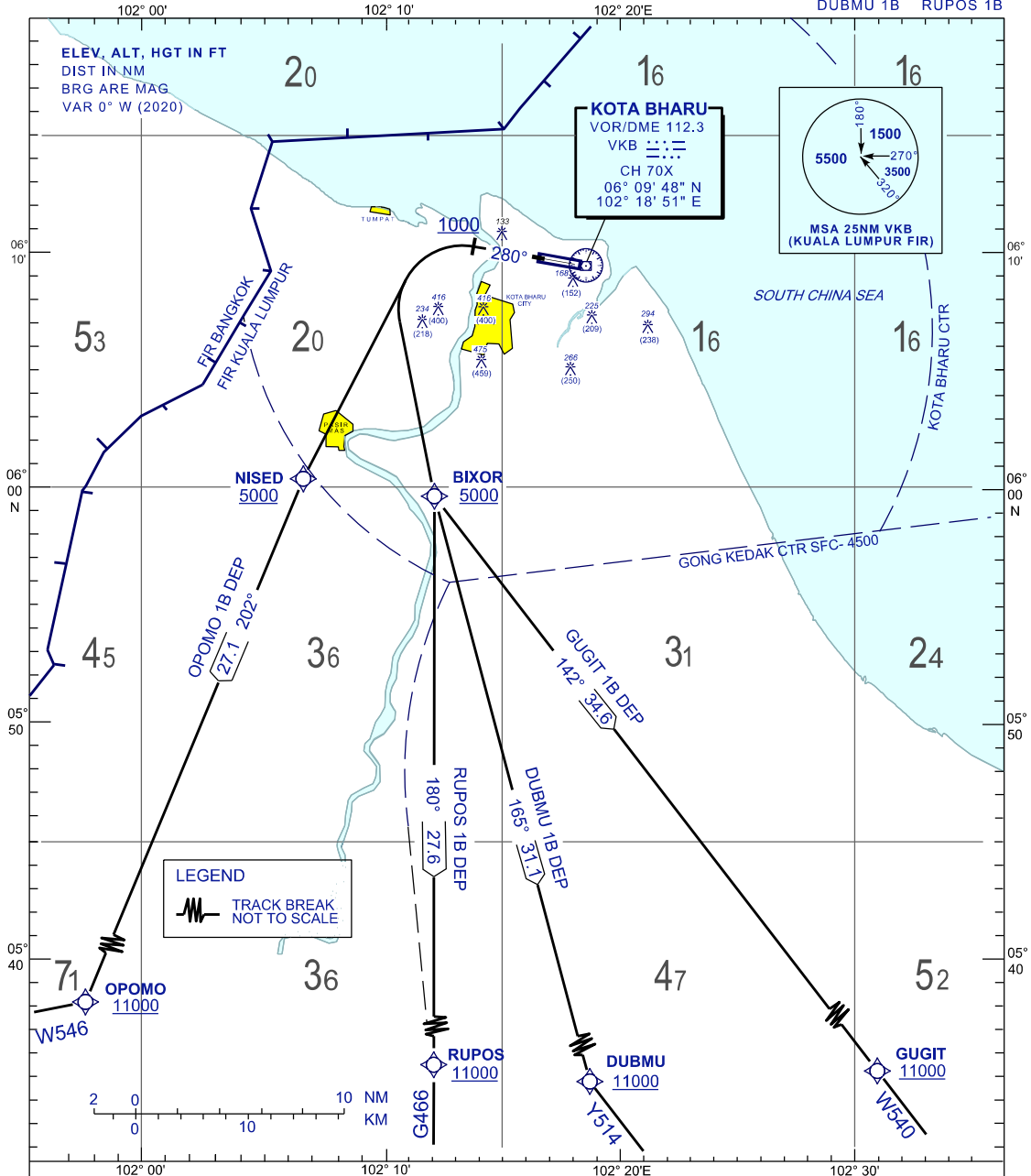
**STANDARD DEPARTURE CHART  
INSTRUMENT (SID) - ICAO**

TRANSITION ALTITUDE  
11 000 FT

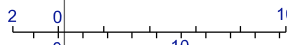
APP 120.85, 130.3  
TWR 122.5  
SMC 121.6  
ATIS 128.85

**KOTA BHARU/  
SULTAN ISMAIL PETRA (WMKC)  
RNAV (GNSS) RWY 28**

OPOMO 1B DUBMU 1B  
GUGIT 1B RUPOS 1B



**LEGEND**  
— TRACK BREAK  
NOT TO SCALE



RATE OF CLIMB (FT)		120	150	180	210	240	270
GRADIENT	5.2%	632	790	948	1106	1264	1422
	3.3%	401	501	602	702	802	902
	3.6%	437	547	656	766	875	984

**COMMUNICATION FAILURE :**

- SQUAWK 7600
- IF UNDER PILOT NAVIGATION, MAINTAIN LAST ASSIGNED LEVEL FOR 3 MINUTE, IF NO ONWARD CLEARANCE IS RECEIVED, SUBSEQUENTLY CLIMB TO COMPLY WITH SID.
- IF UNDER RADAR VECTORING, MAINTAIN VECTOR FOR 2 MINUTES
- IF BELOW MSA, CLIMB TO MSA, THEN TRACK TO INTERCEPT CLEARED OR PREVIOUSLY ASSIGNED SID TO DESTINATION.

CHANGES: MAGNETIC VARIATION