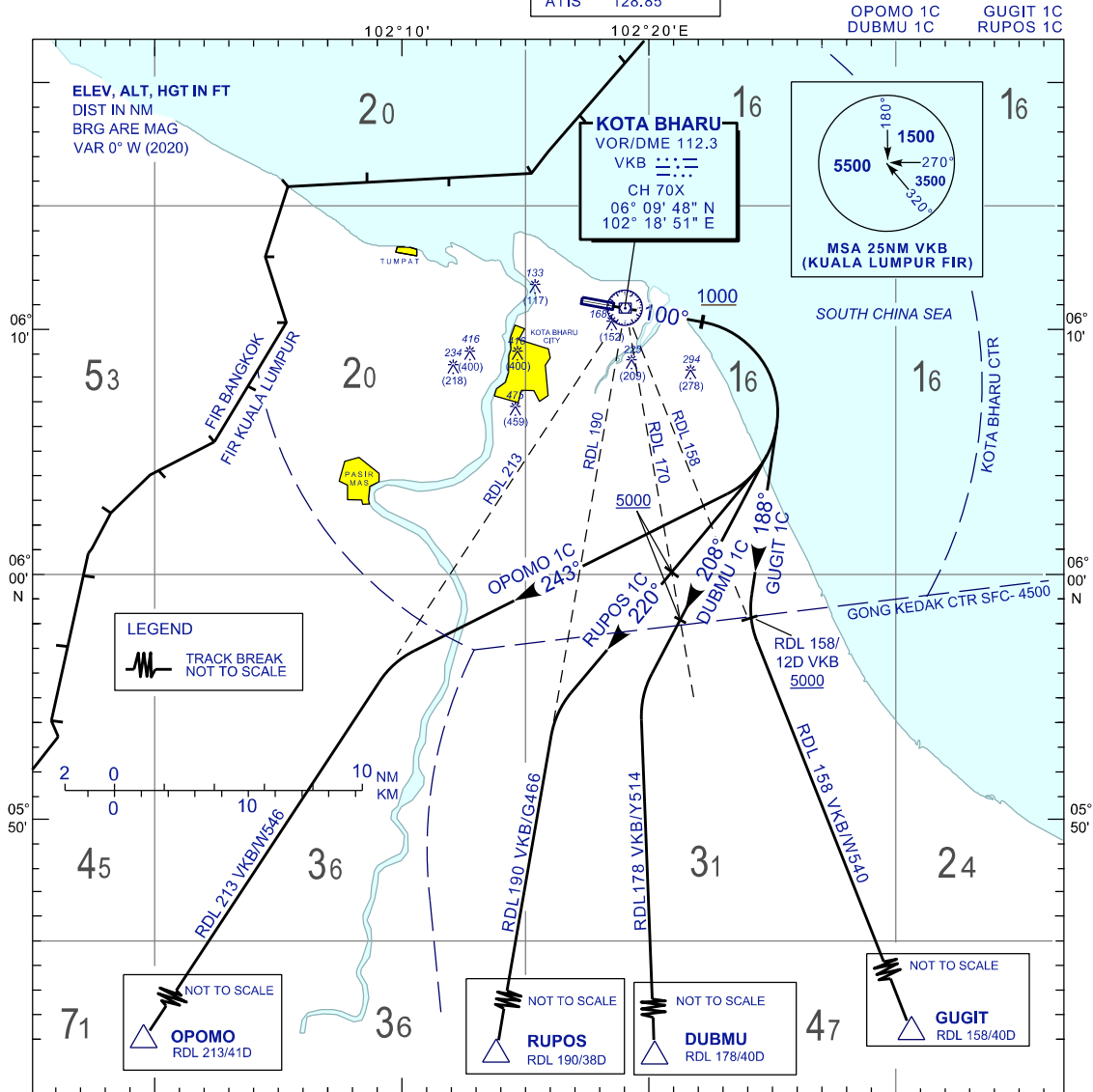


**STANDARD DEPARTURE CHART
INSTRUMENT (SID) - ICAO**

TRANSITION ALTITUDE
11000 FT

APP 120.85,130.3
TWR 122.5
SMC 121.6
ATIS 128.85

**KOTA BHARU/
SULTAN ISMAIL PETRA (WMKC)
RWY 10**



OPMO ONE CHARLIE DEPARTURE (OPMO 1C)

TRACK HEADING 100° AT 1000FT OR ABOVE
TURN RIGHT HEADING 243° TO INTERCEPT
RDL 213 VKB VOR TO OPMO/ W546
NOTE*
1. PDG 4.4% UNTIL PASSING 5000FT

GUGIT ONE CHARLIE DEPARTURE (GUGIT 1C)

TRACK HEADING 100° AT 1000FT OR ABOVE
TURN RIGHT TRACK 188° TO INTERCEPT
RDL158 VKB VOR TO GUGIT/ W540
NOTE*
1. PDG 5.7% UNTIL PASSING 5000FT
2. CROSS 12 DME ON RDL 158 VKB VOR
5000FT OR ABOVE

RUPOS ONE CHARLIE DEPARTURE (RUPOS 1C)

TRACK HEADING 100° AT 1000FT OR ABOVE TURN RIGHT
TRACK 220° TO INTERCEPT RDL190 VKB VOR TO RUPOS/G466
NOTE*
1. PDG 5.7% UNTIL PASSING 5000FT
2. CROSS RDL170 VKB VOR 5000FT OR ABOVE

DUBMU ONE CHARLIE DEPARTURE (DUBMU 1C)

TRACK HEADING 100° AT 1000FT OR ABOVE TURN RIGHT
TRACK 208° TO INTERCEPT RDL178 VKB VOR TO DUBMU/Y514
NOTE*
1. PDG 5.7% UNTIL PASSING 5000FT
2. CROSS RDL170 VKB VOR 5000FT OR ABOVE

RATE OF CLIMB(FT)						
GND SPEED - KT	120	150	180	210	240	270
3.3%	401	501	601	702	802	902
4.4%	535	668	802	936	1069	1203
5.7%	692	866	1039	1212	1385	1558

COMMUNICATION FAILURE :

- SQUAWK 7600
- IF UNDER PILOT NAVIGATION, MAINTAIN LAST ASSIGNED LEVEL FOR 3 MINUTE, IF NO ONWARD CLEARANCE IS RECEIVED, SUBSEQUENTLY CLIMB TO COMPLY WITH SID.
- IF UNDER RADAR VECTORED, MAINTAIN VECTOR FOR 2 MINUTES
- IF BELOW MSA, CLIMB TO MSA, THEN TRACK TO INTERCEPT CLEARED OR PREVIOUSLY ASSIGNED SID TO DESTINATION.

CHANGES: MAGNETIC VARIATION