

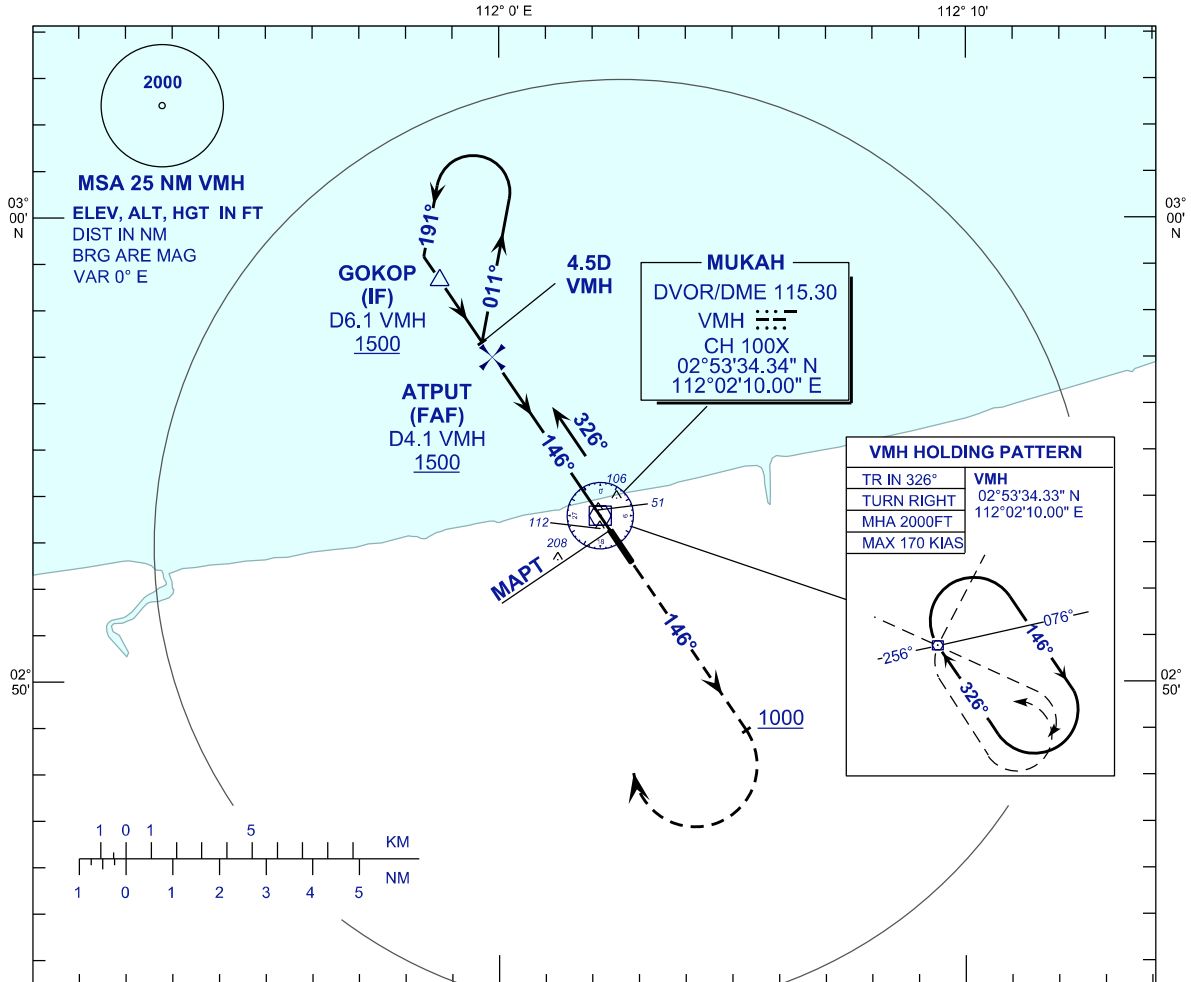
**INSTRUMENT  
APPROACH  
CHART - ICAO**

**AERODROME ELEV 20 FT**  
HEIGHTS RELATED TO  
THR RWY 15 - ELEV 20 FT

TWR	118.300
SMC	118.425 (S)
ATIS	126.200

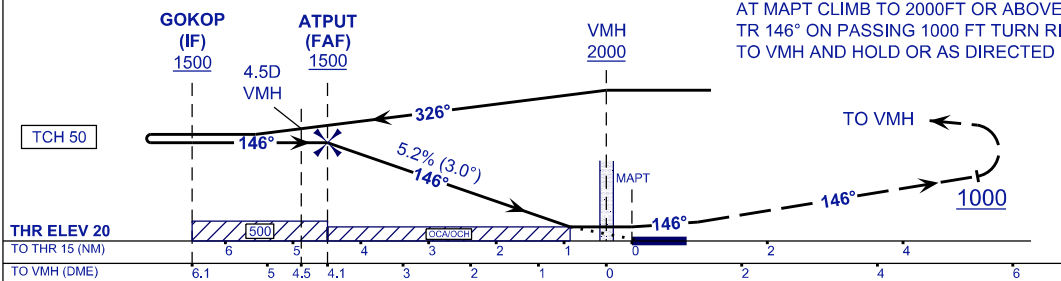
**MUKAH/MUKAH(WBGK)**

VOR Y RWY 15



TRANSITION LEVEL FL130  
TRANSITION ALT 11 000

**MISSED APPROACH**  
AT MAPT CLIMB TO 2000FT OR ABOVE ON TR 146° ON PASSING 1000 FT TURN RIGHT TO VMH AND HOLD OR AS DIRECTED BY ATC



OCA /OCH	A	B
VOR/DME	360 (340)	
CIRCLING (MNM/VIS)	550 (530) / 1.0	550 (530) / 1.5

DME VMH	NM	4.1	3.0	2.0	1.0	0.0
DIST THR / RWY15	NM	4.5	3.4	2.4	1.4	0.4
ALTITUDE	FT	1500	1153	834	516	198

GROUND SPEED		KT	80	100	120	140	160	180
FAF - THR RWY15 (4.5NM)		MIN:SEC	3:22	2:42	2:15	1:55	1:41	1:30
RATE OF DESCEND(318.5FT/NM)		FT/MIN	420	530	640	740	850	960

CHANGES : AT VMH HOLDING PATTERN READ TR IN 146° TO 326°  
AND IAS 170 KT TO MAX 170 KIAS