

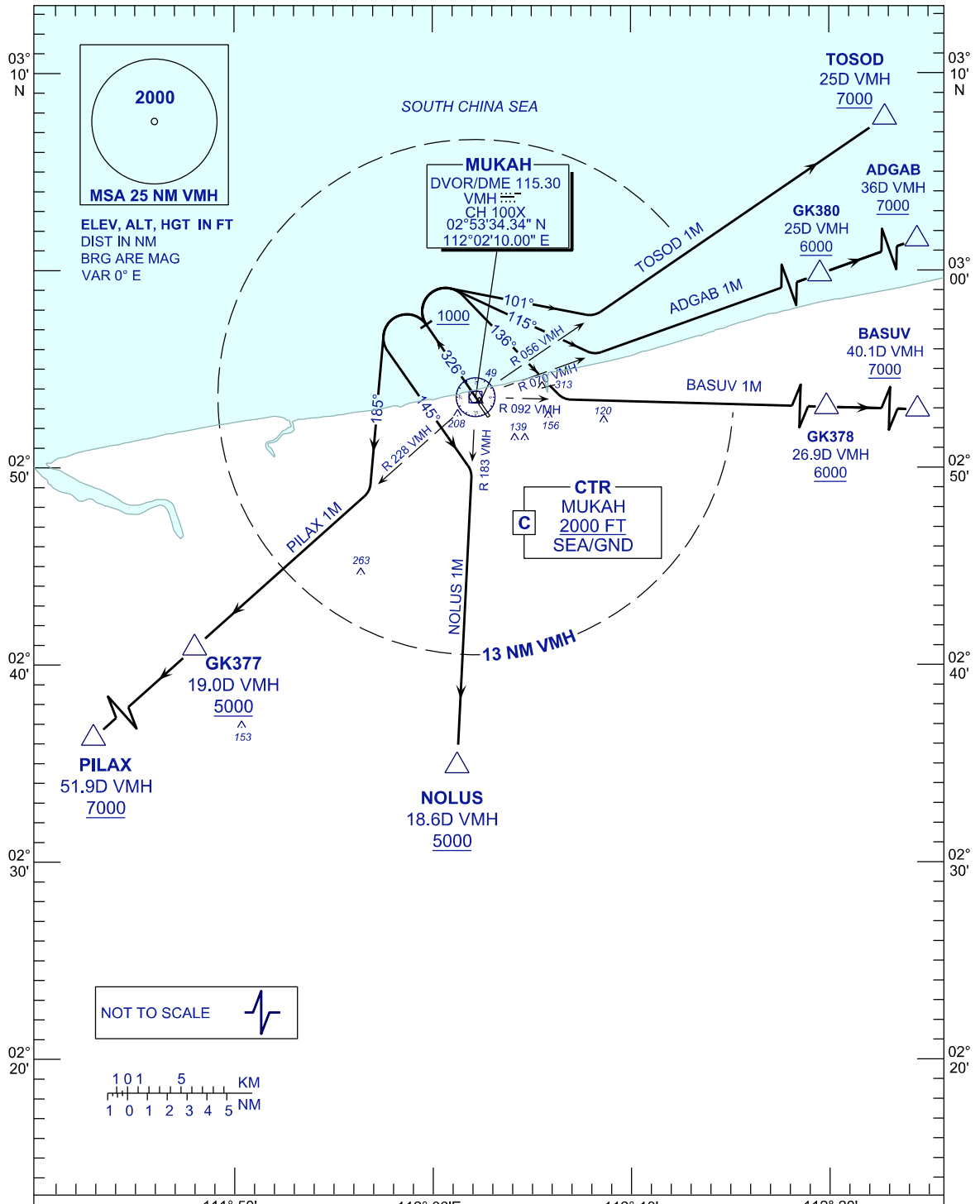
**STANDARD DEPARTURE CHART
INSTRUMENT (SID) - ICAO**

**MUKAH/MUKAH(WBGK)
RWY 33**

TRANSITION ALT 11 000FT

APP	122.6 (P)
TWR	118.30 (P)
ATIS	126.200
	118.075 (S)
	124.4 (S)

TOSOD 1M ADGAB 1M BASUV 1M
NOLUS 1M PILAX 1M



COMMUNICATION FAILURE:

SQUAWK 7600
-IF UNDER PILOT NAVIGATION, MAINTAIN LAST ASSIGNED LEVEL FOR 3 MINUTES, IF NO ONWARDS CLEARANCE IS RECEIVED SUBSEQUENTLY CLIMB TO COMPLY WITH SID TO DESTINATION
-IF UNDER RADAR VECTORING, MAINTAIN VECTOR FOR 1 MINUTE, IF BELOW MSA CLIMB TO MSA, THEN TRACK TO INTERCEPT CLEARED OR PREVIOUSLY ASSIGNED SID TO DESTINATION.

CHANGES : ADD MSA CENTER POINT