

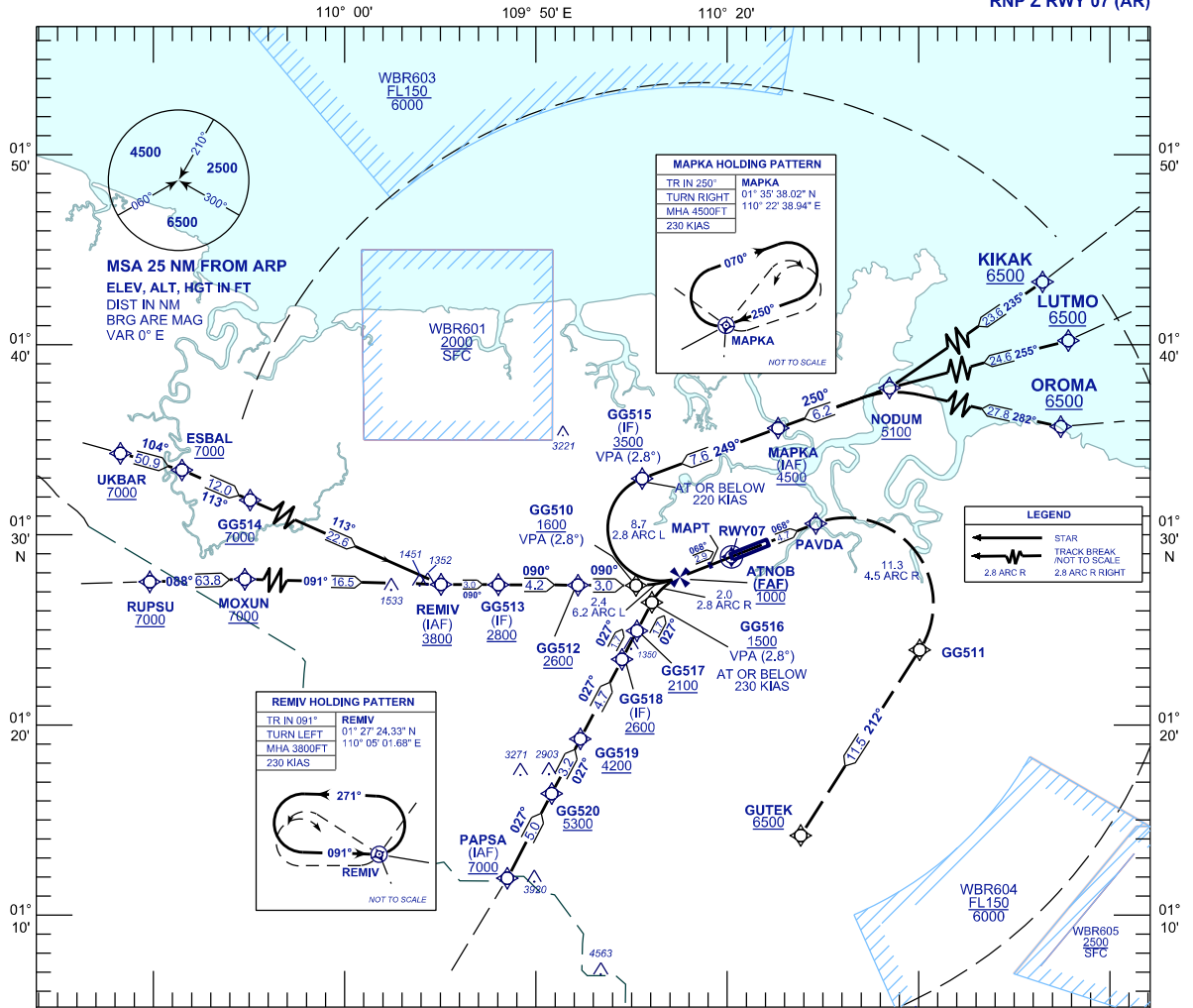
**INSTRUMENT APPROACH CHART - ICAO**

**AERODROME ELEV 88 FT**  
HEIGHT RELATED TO THR RWY 07 - ELEV 88 FT

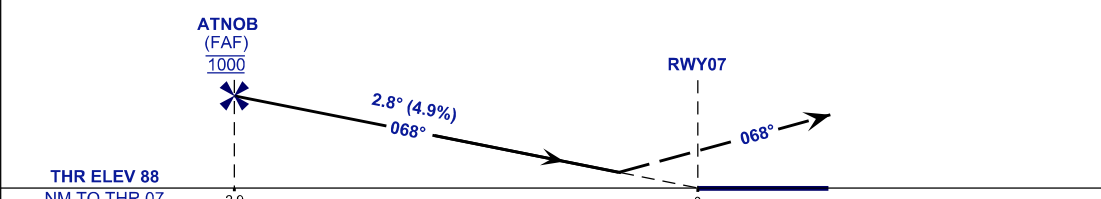
APP	TWR	SMC	ATIS
120.2	118.1	121.9	128.4
123.85	121.7		

**KUCHING/KUCHING INTERNATIONAL AIRPORT (WBGG)**

RNP Z RWY 07 (AR)



VPA 2.8° RDH 50FT  
**MISSED APPROACH**  
 CLIMB TO 6500FT VIA THE RNP MISSED APPROACH TRACK TO GUTEK OR AS DIRECTED BY ATC  
 TRANSITION LEVEL FL130  
 TRANSITION ALT 11 000



STRAIGHT - IN APPROACH	OCA (OCH)		GROUND SPEED - KT					
CATEGORY OF AIRCRAFT	C	D	70	90	100	120	140	160
RNP 0.3	495 (407)		RATE OF DESCENT (2.8°) (FEET/MIN)					
CIRCLING AND ALTERNATE N/A			347	446	495	594	693	792
			DISTANCE TO THRESHOLD (NM)			ALTITUDE (FEET)		
			2.9	2	1	1000	670	370

- 1. AUTHORIZATION REQUIRED
- 2. GNSS REQUIRED
- 3. RF REQUIRED
- 4. APPROACH NOT AUTHORIZED WHEN AIRPORT TEMPERATURE BELOW 19°C OR ABOVE 40°C.
- 5. WBGG ALTIMETER SETTING REQUIRED.
- 6. PAPI AND VERTICAL PATH ANGLE NOT COINCIDENT.
- 7. CLIMB GRADIENT 3.6% REQUIRED TO REACH GUTEK AT 6500 FT.
- 8. RNP 1.0 REQUIRED TO GG520, MAPKA AND REMIV.
- 9. RNP 0.3 REQUIRED FROM GG520, MAPKA AND REMIV TO RWY.

CHANGES: CHART IDENTIFICATION, AT PROFILE VIEW ADD GROUND SPEED AND DISTANCE TO THR TABLE, ADD LEGEND TABLE, AMEND SPEED FOR HOLDING PATTERN,