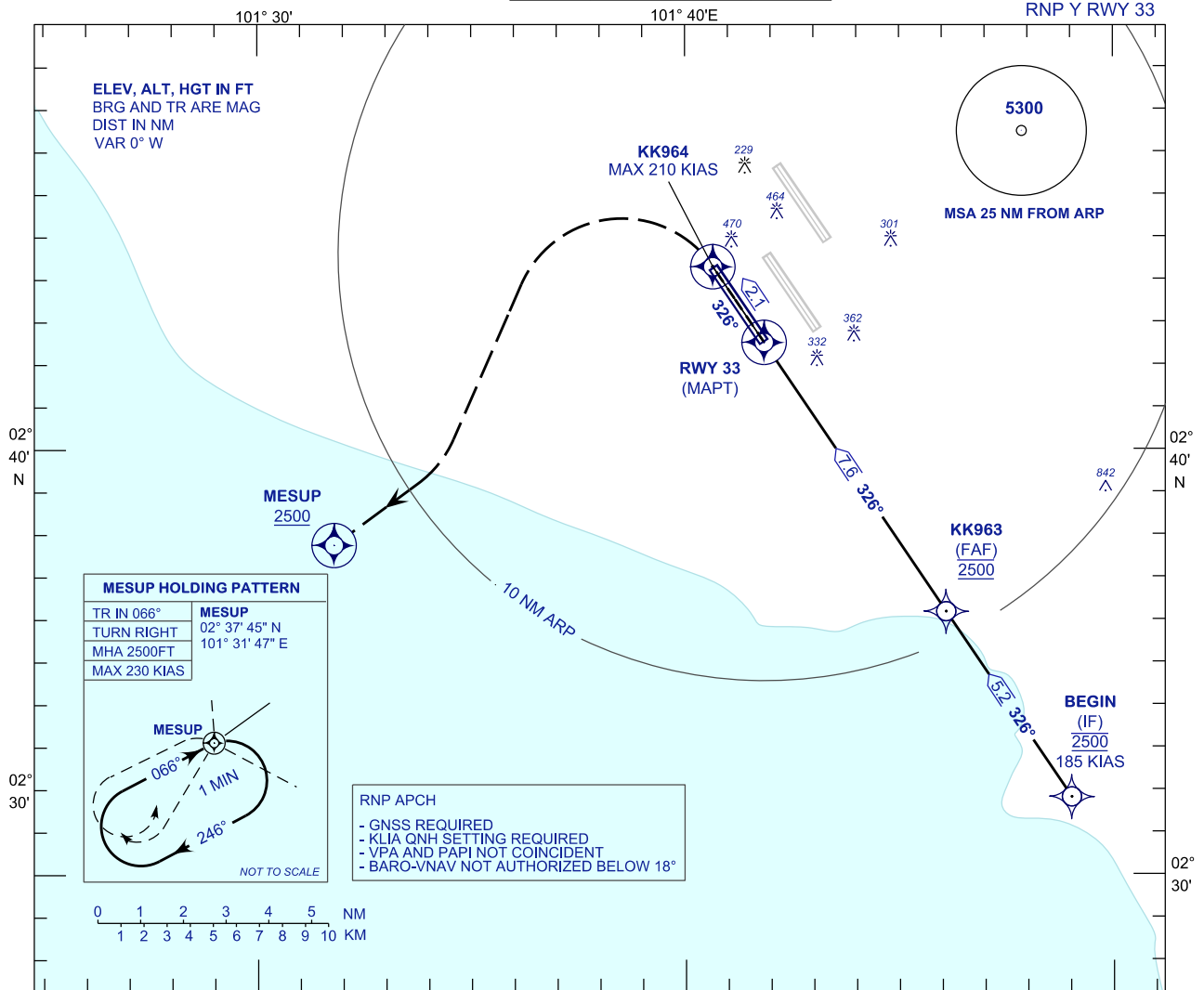


**INSTRUMENT  
APPROACH  
CHART - ICAO**

**AERODROME ELEV 69 FT**  
HEIGHT RELATED TO  
THR RWY 33 - ELEV 28 FT

APP	TWR	SMC	ATIS
119.45 125.85 125.10	119.80	118.050	128.05

**SEPANG/KL INTERNATIONAL  
AIRPORT (WMKK)**



**MESUP HOLDING PATTERN**

TR IN 066°	MESUP
TURN RIGHT	02° 37' 45" N
MHA 2500FT	101° 31' 47" E
MAX 230 KIAS	

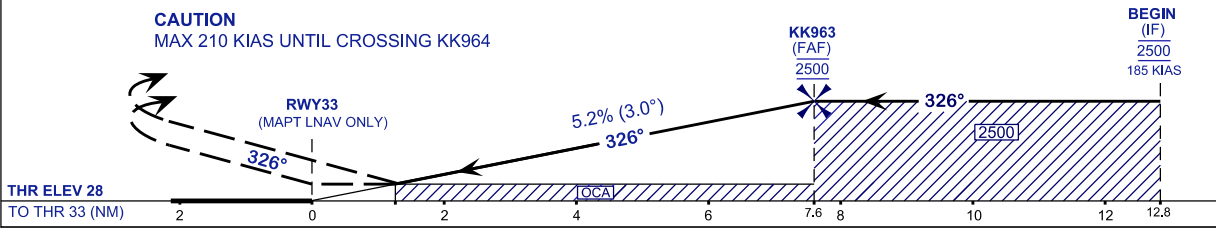
NOT TO SCALE

- RNP APCH**
- GNSS REQUIRED
  - KLIA QNH SETTING REQUIRED
  - VPA AND PAPI NOT COINCIDENT
  - BARO-VNAV NOT AUTHORIZED BELOW 18°

VPA 3.0°  
TCH 52FT

**MISSED APPROACH**  
AT MAPT MAINTAIN TR326 TO KK964 CLIMB TO 2500FT. AT KK964 TURN LEFT TO MESUP AND HOLD OR AS DIRECTED BY ATC

TRANSITION LEVEL FL130  
TRANSITION ALT 11 000



STRAIGHT-IN APPROACH	OCA (OCH)				GROUND SPEED (GS)		KNOTS		80	100	120	140	160	180	
CATEGORY OF AIRCRAFT	A	B	C	D	FAF - RWY33 (7.6 NM)		MIN:SEC		5:42	4:34	3:48	3:16	2:51	2:32	
LNAV / VNAV	500 (472)				RATE OF DESCENT (318.5 FT/NM)		FT/MIN		420	530	630	740	840	950	
LNAV	500 (472)				DIST THR / RWY33		NM	7.6	6.6	5.6	4.6	3.6	2.6	1.6	0.6
	ALTITUDE		FT		2500	2182	1864	1545	1227	909	590	271			

CHANGES : RENAMING CHART IDENTIFICATION