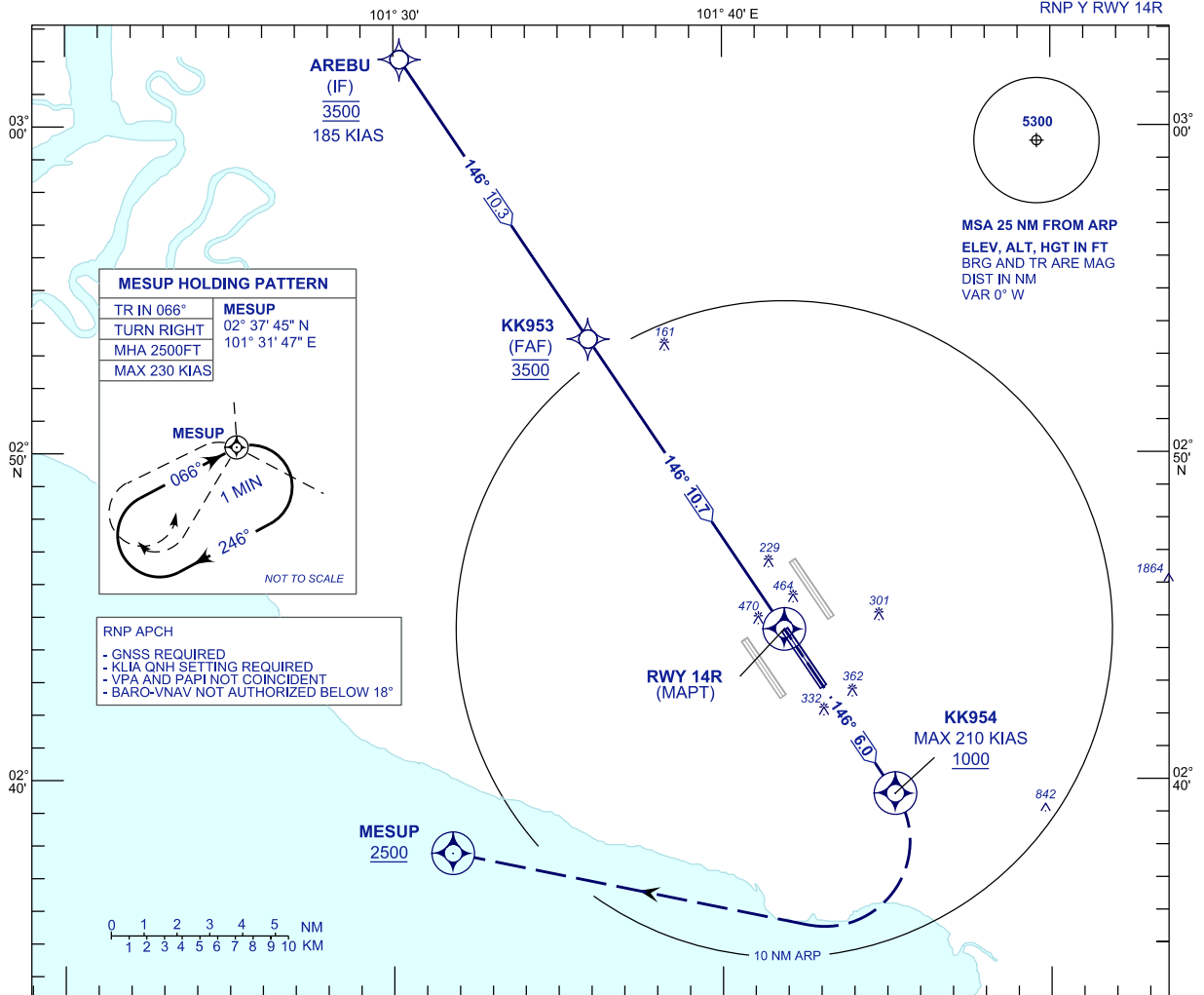


**INSTRUMENT
APPROACH
CHART - ICAO**

AERODROME ELEV 69 FT
HEIGHT RELATED TO
THR RWY 14R - ELEV 54 FT

APP	TWR	SMC	ATIS
118.65	118.50	121.80	128.05
135.75		122.525	
120.35			

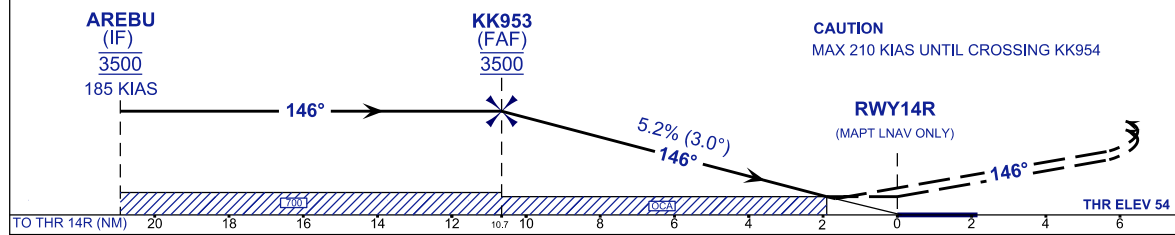
**SEPANG/KL INTERNATIONAL
AIRPORT (WMKK)**



VPA 3.0°
TCH 52 FT

MISSED APPROACH
AT MAPT MAINTAIN TR146 TO KK954 CLIMB TO 2500FT.
AT KK954, TURN RIGHT TO MESUP AND HOLD AT MESUP
OR AS DIRECTED BY ATC.

TRANSITION LEVEL FL130
TRANSITION ALT 11 000



STRAIGHT - IN APPROACH	OCA (OCH)				GROUND SPEED (GS)					KNOTS					
CATEGORY OF AIRCRAFT	A	B	C	D	FAF - RWY14R (10.7 NM)					MIN:SEC					
LNAV / VNAV	630 (576)				RATE OF DESCENT (318.5 FT/NM)					FT/MIN					
LNAV	670 (616)				DIST THR / RWY14R		NM	10.7	9.7	8.7	7.7	6.7	5.7	4.7	3.7
	ALTITUDE		FT		3500	3183	2864	2546	2228	1909	1591	1272			
	DIST THR / RWY14R		NM		2.7	1.7	0.7								
	ALTITUDE		FT		954	635	317								

CHANGES : RENAMING CHART IDENTIFICATION