

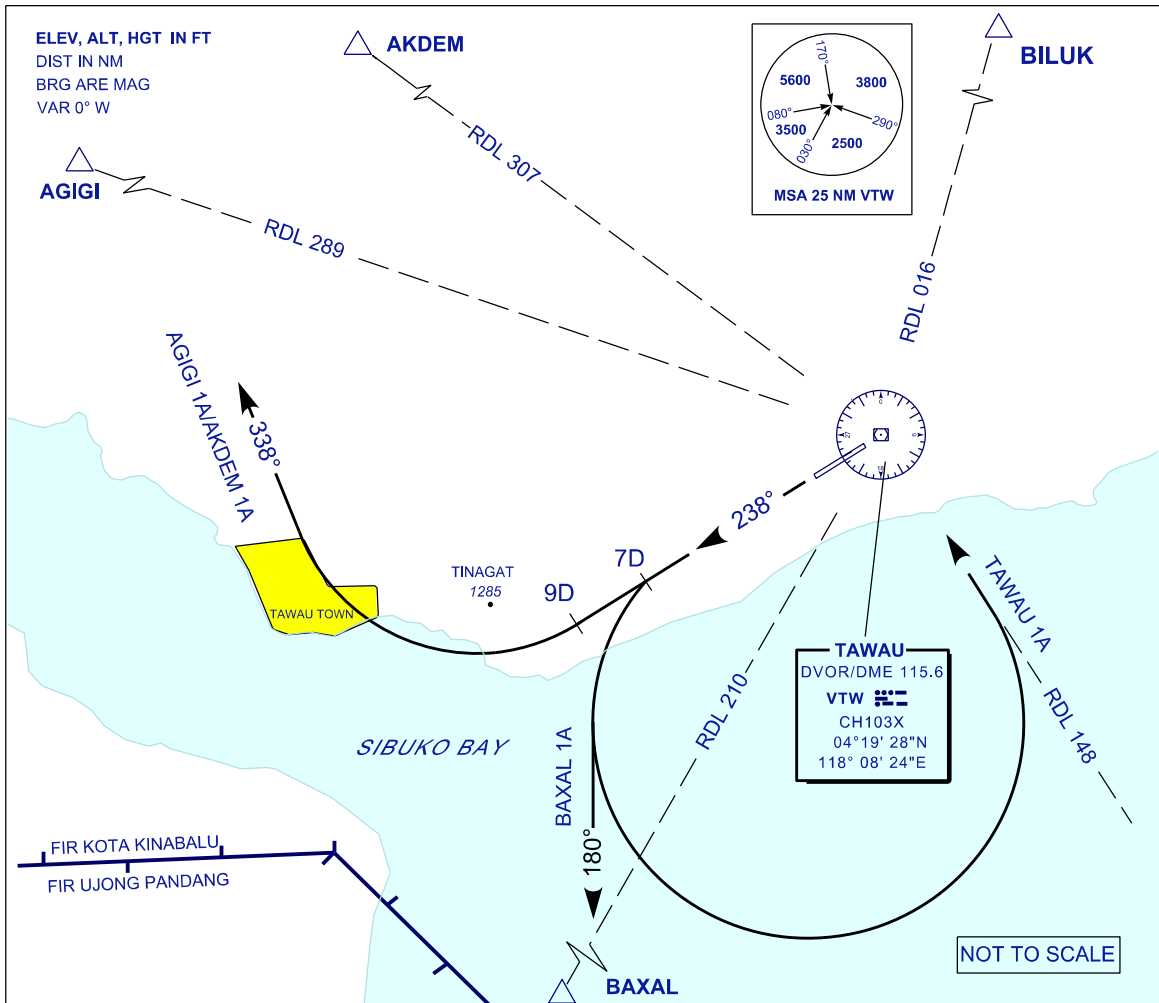
**STANDARD DEPARTURE CHART
INSTRUMENT (SID)**

TRANSITION ALTITUDE
11 000 FT

SMC 121.90
TWR 122.50
APP 123.55
ATIS 126.25

**TAWAU/TAWAU (WBKW)
RWY 24**

BAXAL 1A AGIGI 1A
AKDEM 1A TAWAU 1A



BAXAL 1A DEPARTURE
PDG 5.2% UP TO 2500FT
TRACK 238°
AT 7DME TURN LEFT TRACK 180°
INTERCEPT RDL 210 VTW TO BAXAL

TAWAU 1A DEPARTURE
PDG 5.2% UP TO 2500FT
TRACK 238°
AT 7DME TURN LEFT
TRACK TO VTW VOR

AGIGI 1A DEPARTURE
PDG 5.2% UP TO 5500FT
TRACK 238°
AT 9DME TURN RIGHT TRACK 338°
INTERCEPT RDL 289 VTW TO AGIGI

AKDEM 1A DEPARTURE
PDG 5.2% UP TO 5500FT
TRACK 238°
AT 9DME TURN RIGHT TRACK 338°
INTERCEPT RDL 307 VTW TO AKDEM

RATE OF CLIMB - FT						
GND SPEED - KT	75	100	150	200	250	300
GRADIENT 5.2%	395	527	790	1053	1316	1580
GRADIENT 3.3%	251	334	501	668	835	1003

COMMUNICATION FAILURE :

SET TRANSPONDER CODE 7600
CROSS BAXAL/AGIGI AKDEM/BILUK CLIMBING TO/AT LAST ASSIGNED AND
ACKNOWLEDGED ALT BUT NOT BELOW MNM ALT CONTINUE CLIMB TO FPL FL