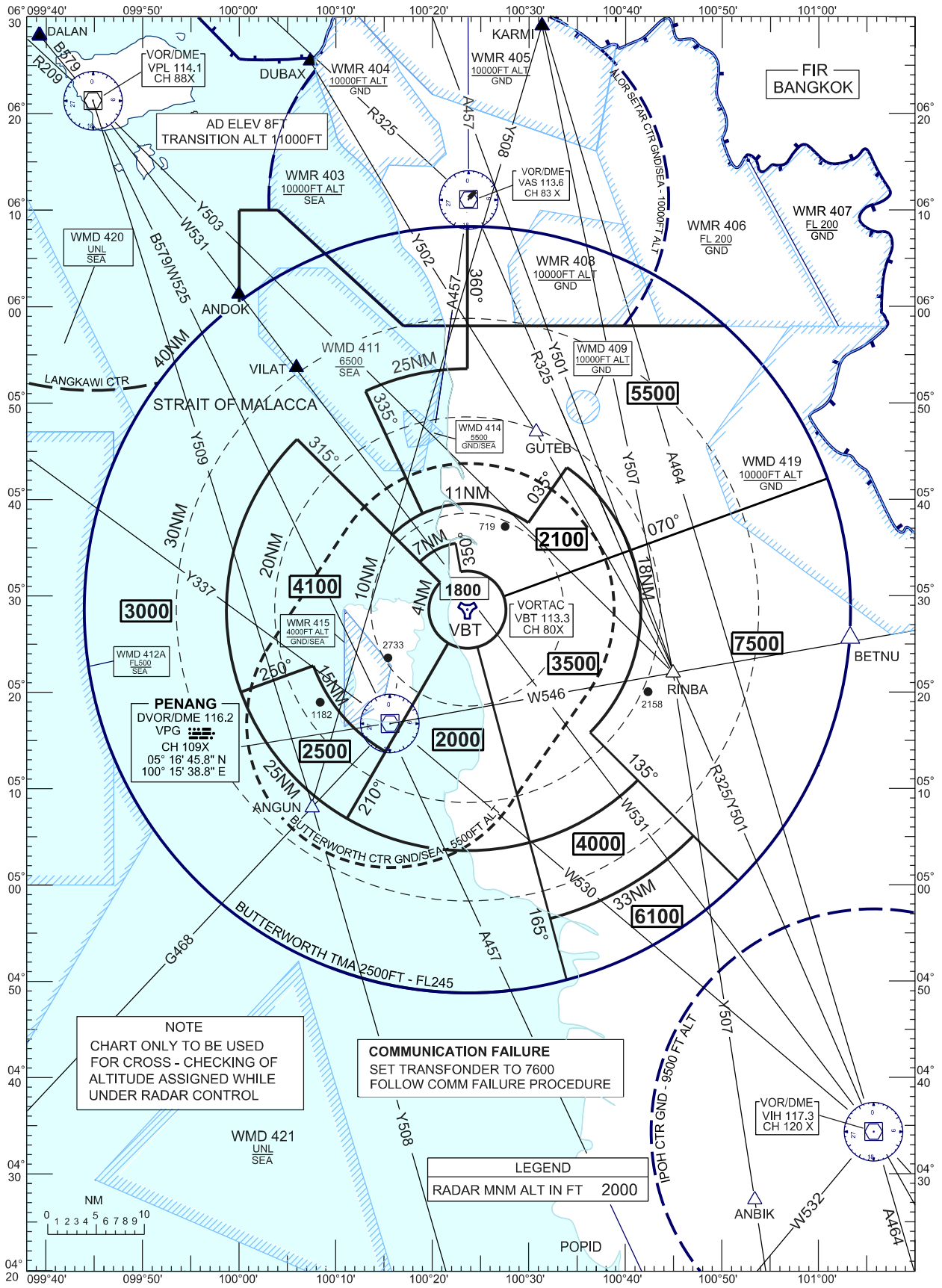


### ATC SURVEILLANCE MINIMUM ALTITUDE CHART



**NOTE**  
CHART ONLY TO BE USED  
FOR CROSS - CHECKING OF  
ALTITUDE ASSIGNED WHILE  
UNDER RADAR CONTROL

**COMMUNICATION FAILURE**  
SET TRANSFONDER TO 7600  
FOLLOW COMM FAILURE PROCEDURE

**LEGEND**  
RADAR MNM ALT IN FT 2000

CHANGES : REALIGNMENT OF DANGER AREA WMD421  
ADD ANBIK, OREKA, RINBA, ANGUN, GUTEB TO THE CHART  
ADD NEW ATS/RNAV: Y501, Y502, Y503, Y507, Y508 THE CHART