

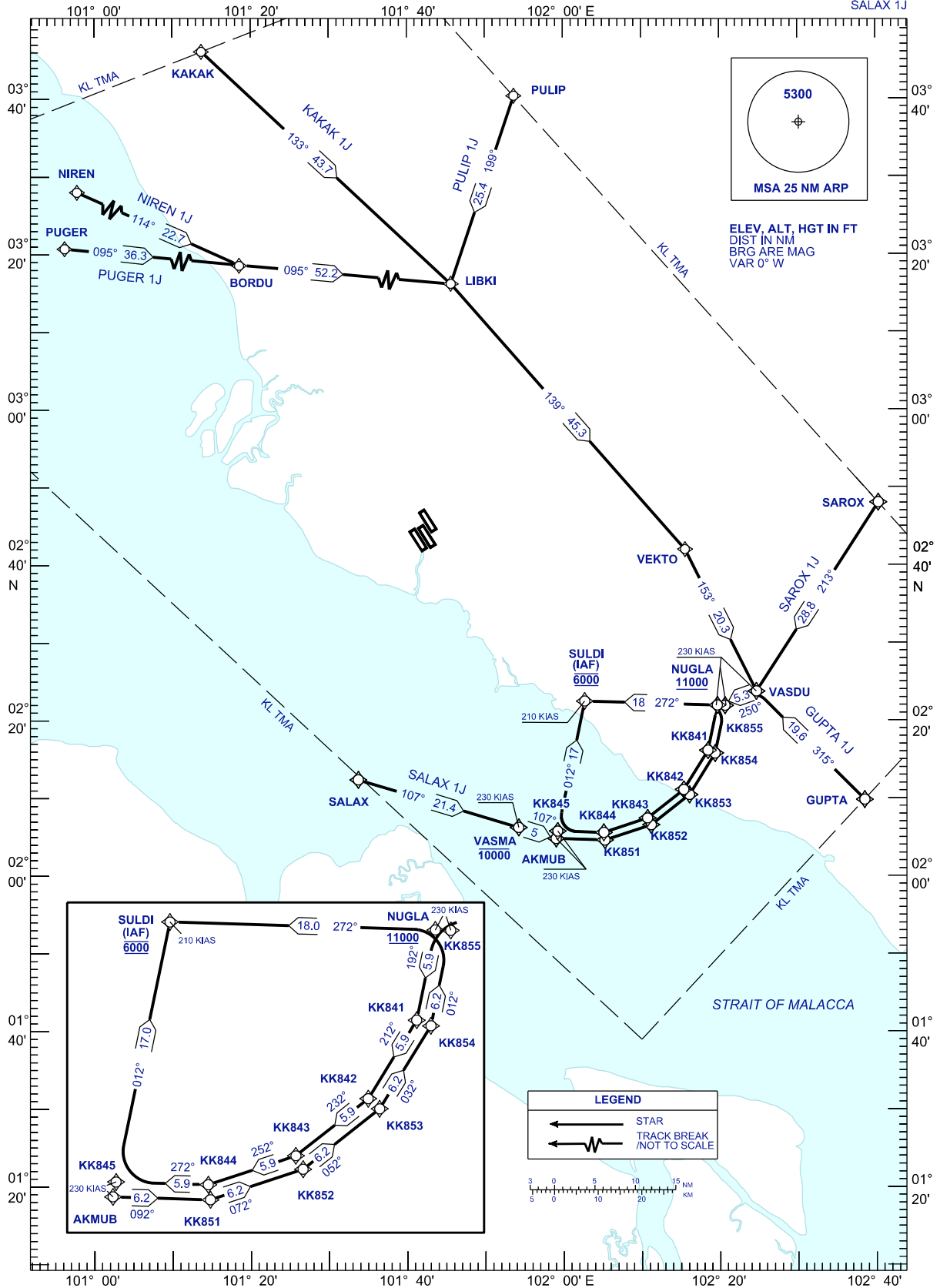
**STANDARD ARRIVAL CHART
INSTRUMENT (STAR) - ICAO**

TRANSITION ALT 11000 FT

APP	121.250	TWR	118.800
	124.200		118.500
	118.650		119.800
	125.850	ATIS	128.050
	135.750		

**SEPANG/KL INTERNATIONAL
AIRPORT (WMCK)
RNAV(GNSS) RWY 32R, 32L, 33**

PMS SOUTH
PUGER 1J KAKAK 1J SAROX 1J
NIREN 1J PULIP 1J GUPTA 1J
SALAX 1J



CHANGES: CHANGE BEARING & DISTANCE BETWEEN PUGER TO BORDU,
CHANGE COURSE BETWEEN NIREN TO BORDU.