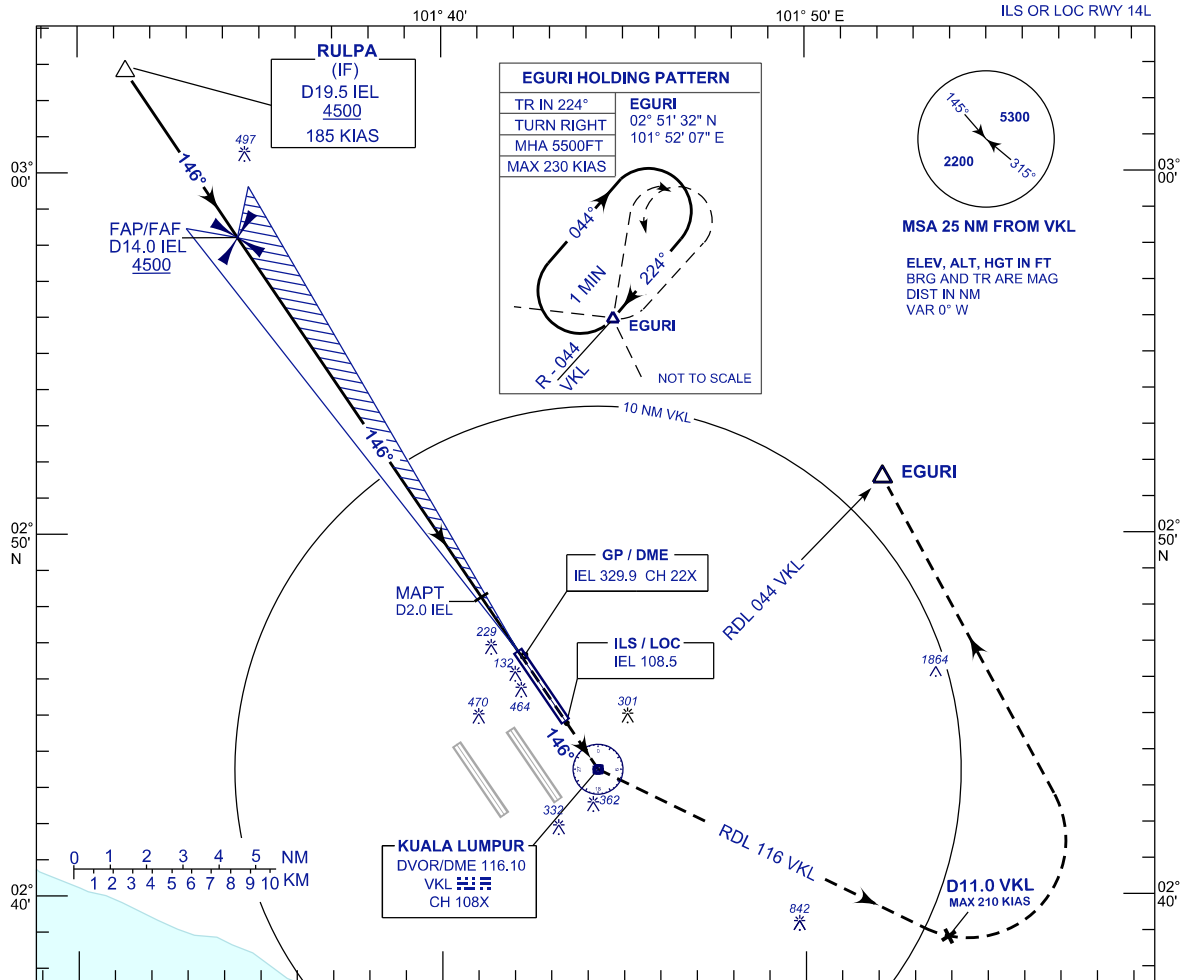


**INSTRUMENT
APPROACH
CHART - ICAO**

AERODROME ELEV 69 FT
HEIGHT RELATED TO
THR RWY 14L - ELEV 54 FT

APP 118.65 120.35 135.75	TWR 118.80	SMC 121.65	ATIS 128.05
-----------------------------------	---------------	---------------	----------------

**SEPANG/KL INTERNATIONAL
AIRPORT (WMKK)**

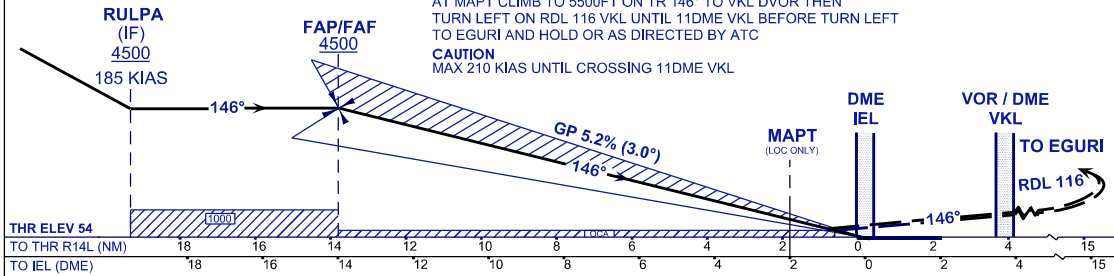


USE QNH
ILS RDH 52 FT

MISSED APPROACH

AT MAPT CLIMB TO 5500FT ON TR 146° TO VKL DVOR THEN
TURN LEFT ON RDL 116 VKL UNTIL 11DME VKL BEFORE TURN LEFT
TO EGURI AND HOLD OR AS DIRECTED BY ATC
CAUTION
MAX 210 KIAS UNTIL CROSSING 11DME VKL

TRANSITION LEVEL FL130
TRANSITION ALT 11 000



OCA (OCH)	A	B	C	D
ILS/DME CAT I	300 (246)			
LOC/DME (GP INOP)	500 (446)			

GROUND SPEED (GS)	KT	80	100	120	140	160	180	200
FAP - RWY14L (13.8 NM)	MIN:SEC	10:21	8:17	6:54	5:55	5:11	4:36	4:09
RATE OF DESCEND (318.4 FT/NM)	FT/MIN	420	530	630	740	840	950	1060

DME IEL	NM	14.0	13.0	12.0	11.0	10.0	9.0	8.0	7.0	6.0	5.0	4.0	3.0	2.0	1.0
DIST THR/RWY14L	NM	13.8	12.8	11.8	10.8	9.8	8.8	7.8	6.8	5.8	4.8	3.8	2.8	1.8	0.8
ALTITUDE	FT	4500	4182	3864	3546	3227	2909	2590	2272	1953	1635	1317	998	680	361