

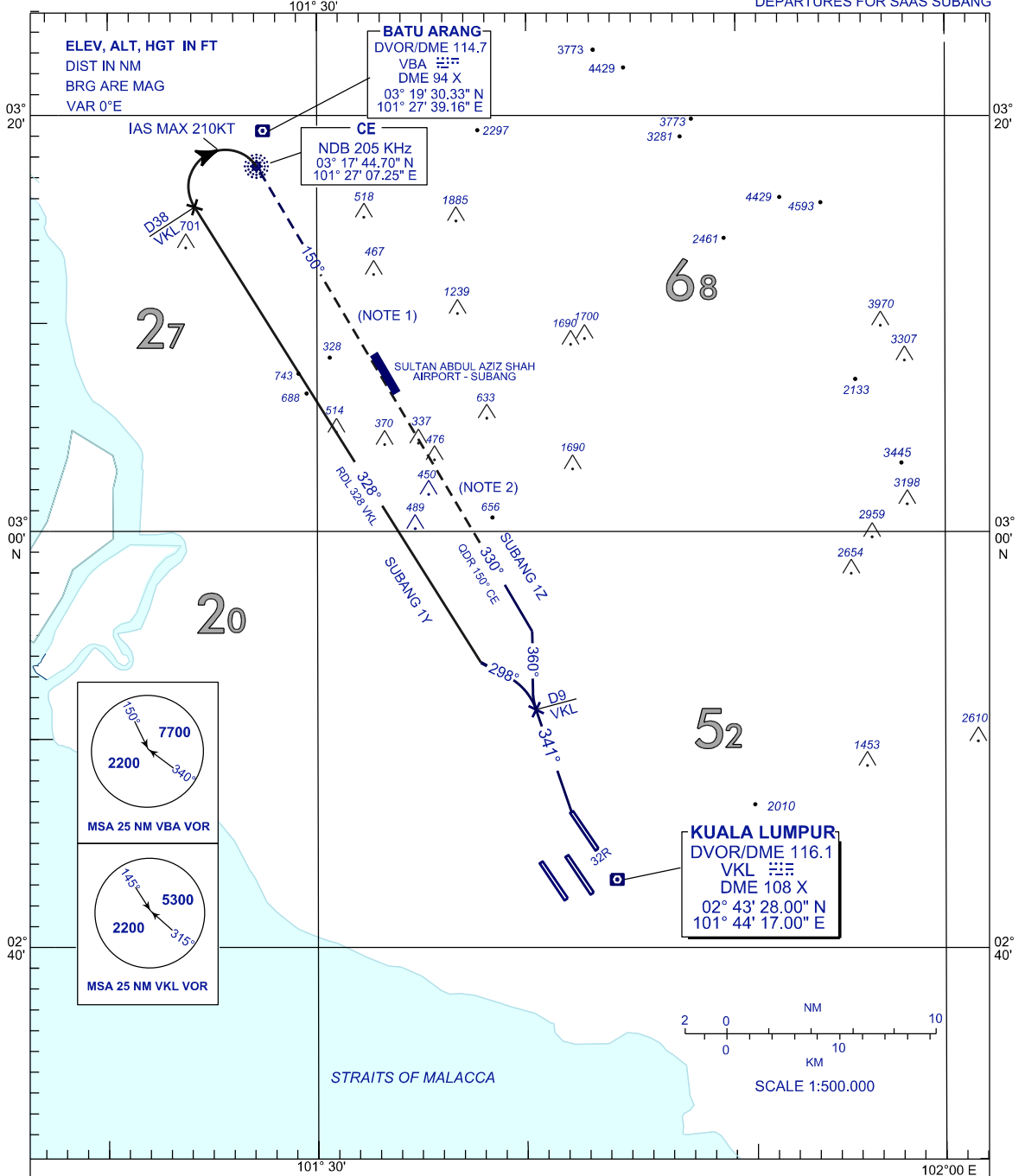
STANDARD DEPARTURE CHART
INSTRUMENT (SID) - ICAO

TRANSITION ALT
11000 FT

APP	135.250, 124.200,
TWR	118.650
GND	121.650
ATIS	126.450

SEPANG/KL INTERNATIONAL
AIRPORT (WMKK)
RWY 32R

DEPARTURES FOR SAAS SUBANG



REMARKS :

- NOTE 1 : EXPECT ILS OR LOC APPROACH RWY15 OR RNP Y APPROACH RWY15
- NOTE 2 : EXPECT RNP Y APPROACH RWY33

- SUBANG 1Z : AFTER TAKE-OFF PROCEED ON TR 341° UNTIL 9 DME VKL, THEN TURN RIGHT ON TR 360° UNTIL JOINING QDR 150° CE NDB. EXPECT RNP Y APPROACH RWY33.
- SUBANG 1Y : AFTER TAKE-OFF PROCEED ON TR 341° UNTIL 9 DME VKL, THEN TURN LEFT ON TR 298° TO INTERCEPT AND FOLLOW RDL 328° VKL VOR. AT 38 DME VKL TURN RIGHT (IAS MAX 210KT) TO CE NDB. EXPECT ILS OR LOC APPROACH RWY 15 OR RNP Y APPROACH RWY15.

CHANGES : AMEND COORDINATES FOR BATU ARANG, CE AND KUALA LUMPUR.