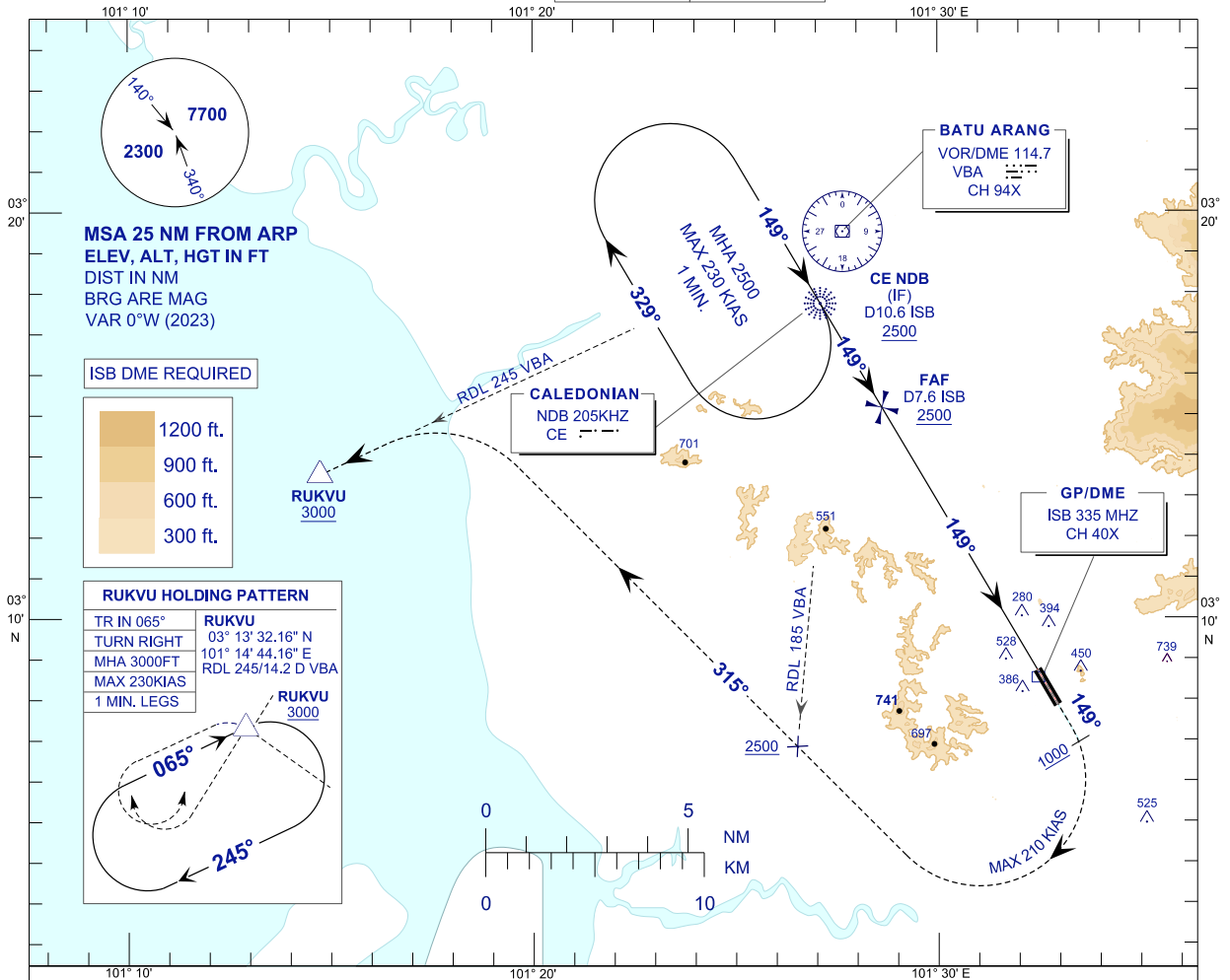


**INSTRUMENT
APPROACH
CHART - ICAO**

AERODROME ELEV 89FT
HEIGHT RELATED TO
THR RWY 15 - ELEV 71FT

APP	118.65	ACD	120.45
	124.20	SMC	121.90
	135.25	TWR	118.20
FIS	126.10	ATIS	127.60

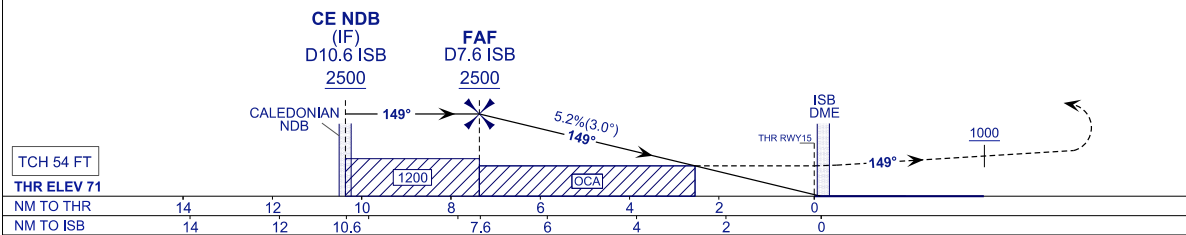
**SUBANG/SULTAN ABDUL
AZIZ SHAH (WMSA)
NDB RWY 15**



TRANSITION LEVEL FL 130
TRANSITION ALT 11,000 FT

MISSED APPROACH:
CLIMB TO 3000FT OR ABOVE ON TR 149°, ON PASSING 1000FT TURN RIGHT TR 315° TO INTERCEPT RADIAL 245° VBA VOR/DME TO RUKVU AND HOLD, OR AS DIRECTED BY ATC.

CAUTION:
MISSED APPROACH TURN SPEED MAXIMUM 210KIAS, TO CROSS RADIAL 185° VBA VOR/DME AT 2500FT OR ABOVE.



TCH	54 FT							
THR ELEV	71							
NM TO THR	14	12	10	8	6	4	2	0
NM TO ISB	14	12	10.6	7.6	6	4	2	0

DME ISB (NM)	7.6	7.2	6.2	5.2	4.2	3.2	2.2	1.2
DIST THR RWY15 (NM)	7.5	7.0	6.0	5.0	4.0	3.0	2.0	1.0
ALTITUDE (FT)	2500	2350	2031	1713	1394	1076	758	439
GROUND SPEED (KT)	80	100	120	140	160	180		
FAF - RWY15 (7.5NM) (MIN:SEC)	5:36	4:29	3:44	3:12	2:48	2:29		
RATE OF DESCEND (5.2%) (FT/MIN)	420	530	640	740	850	960		

OCA (H)	A	B	C	D
STRAIGHT IN APPROACH	910 (839)			

NEW CHART