

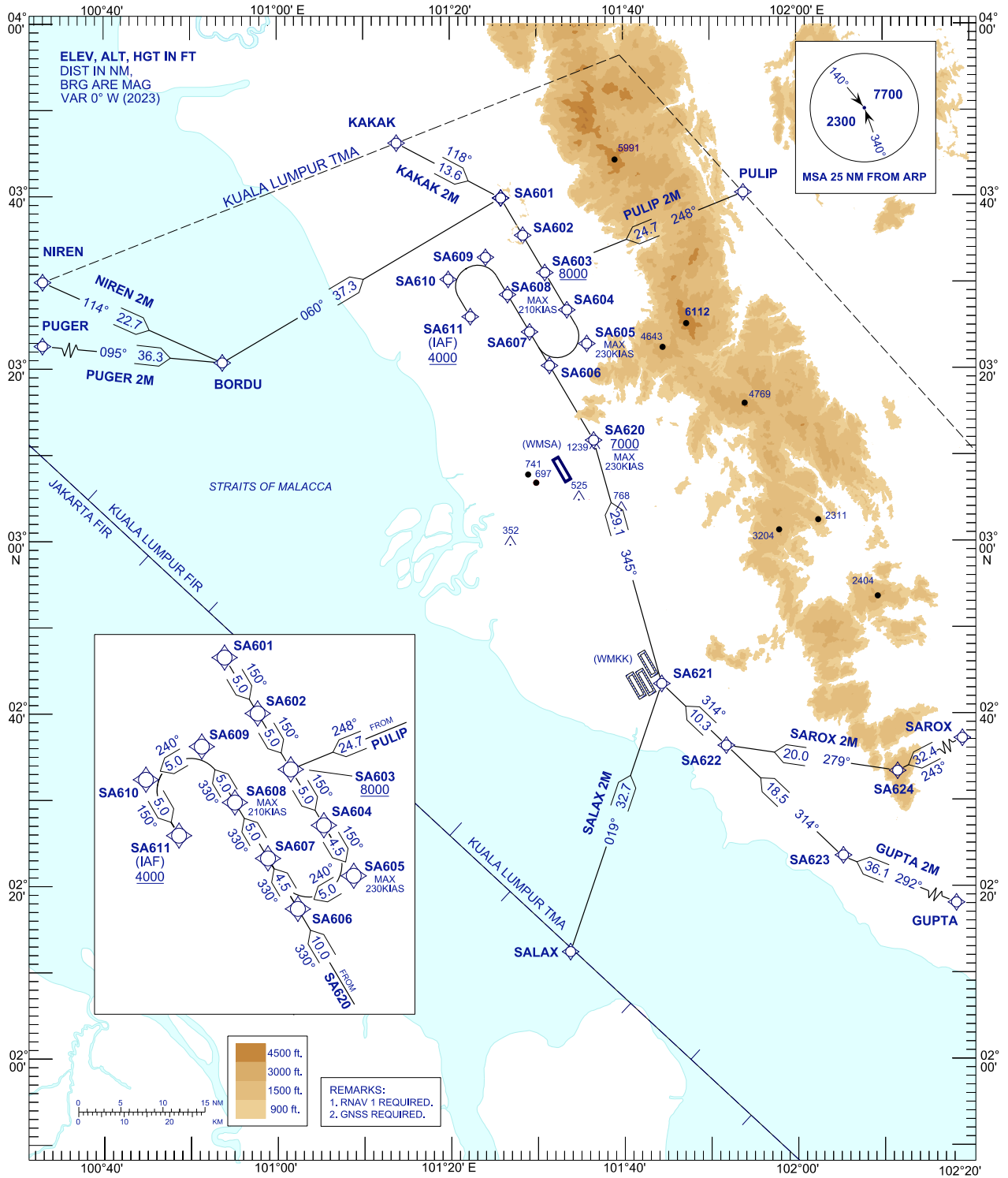
**STANDARD ARRIVAL CHART
INSTRUMENT (STAR) - ICAO**

TRANSITION ALTITUDE
11000FT

APP	118.65	ACD	120.45
	124.20	SMC	121.90
	135.25	TWR	118.20
FIS	126.10	ATIS	127.60

**SUBANG/SULTAN ABDUL
AZIZ SHAH (WMSA)
RNAV RWY 15**

PUGER 2M NIREN 2M KAKAK 2M
PULIP 2M SAROX 2M GUPTA 2M
SALAX 2M



NEW CHART