

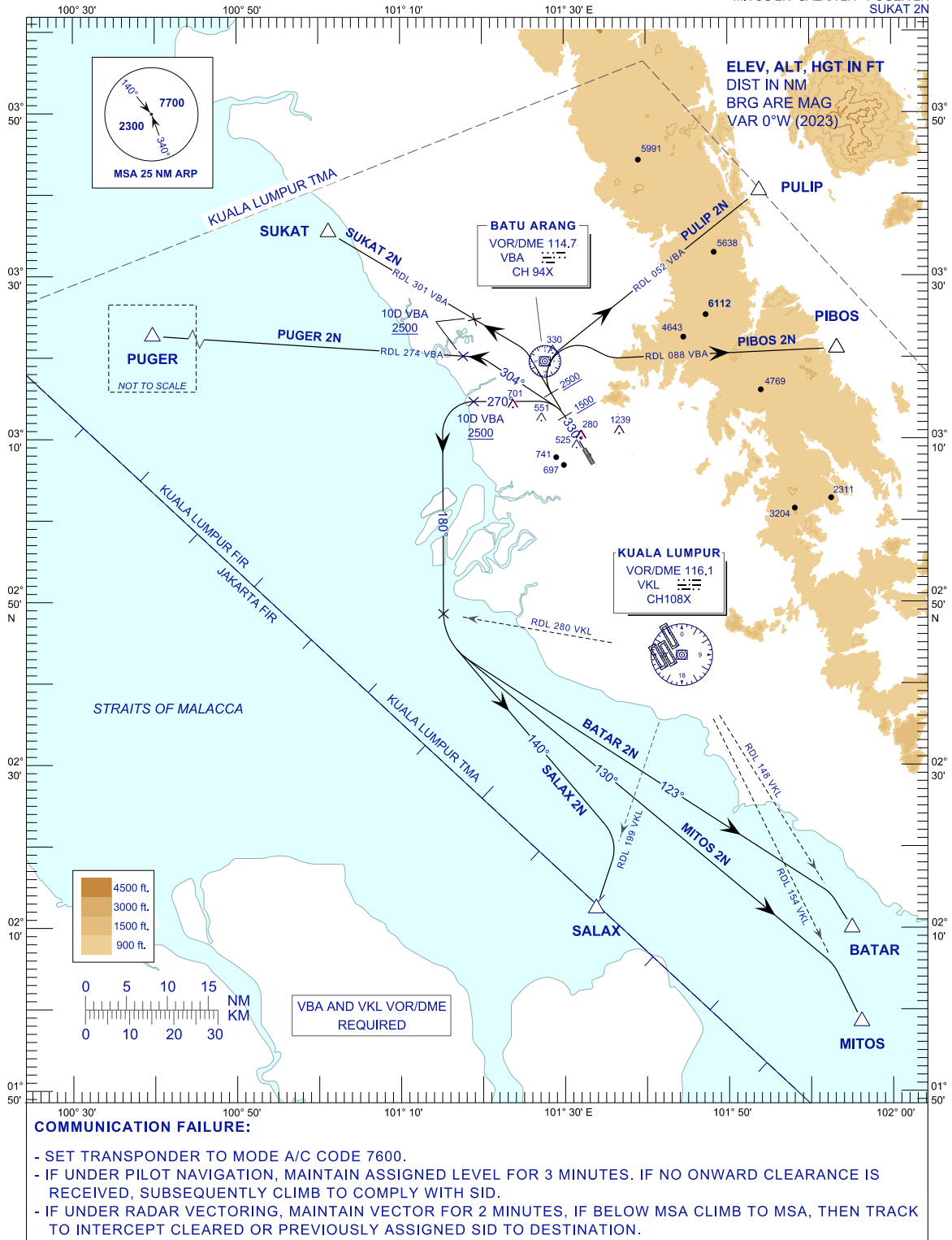
**STANDARD DEPARTURE CHART
INSTRUMENT (SID) - ICAO**

TRANSITION ALTITUDE
11000FT

APP	118.65	ACD	120.45
	124.20	SMC	121.90
	135.25	TWR	118.20
FIS	126.10	ATIS	127.60

**SUBANG/SULTAN ABDUL
AZIZ SHAH (WMSA)
RWY 33**

PULIP 2N PIBOS 2N BATAR 2N
MITOS 2N SALAX 2N PUGER 2N
SUKAT 2N



NEW CHART