

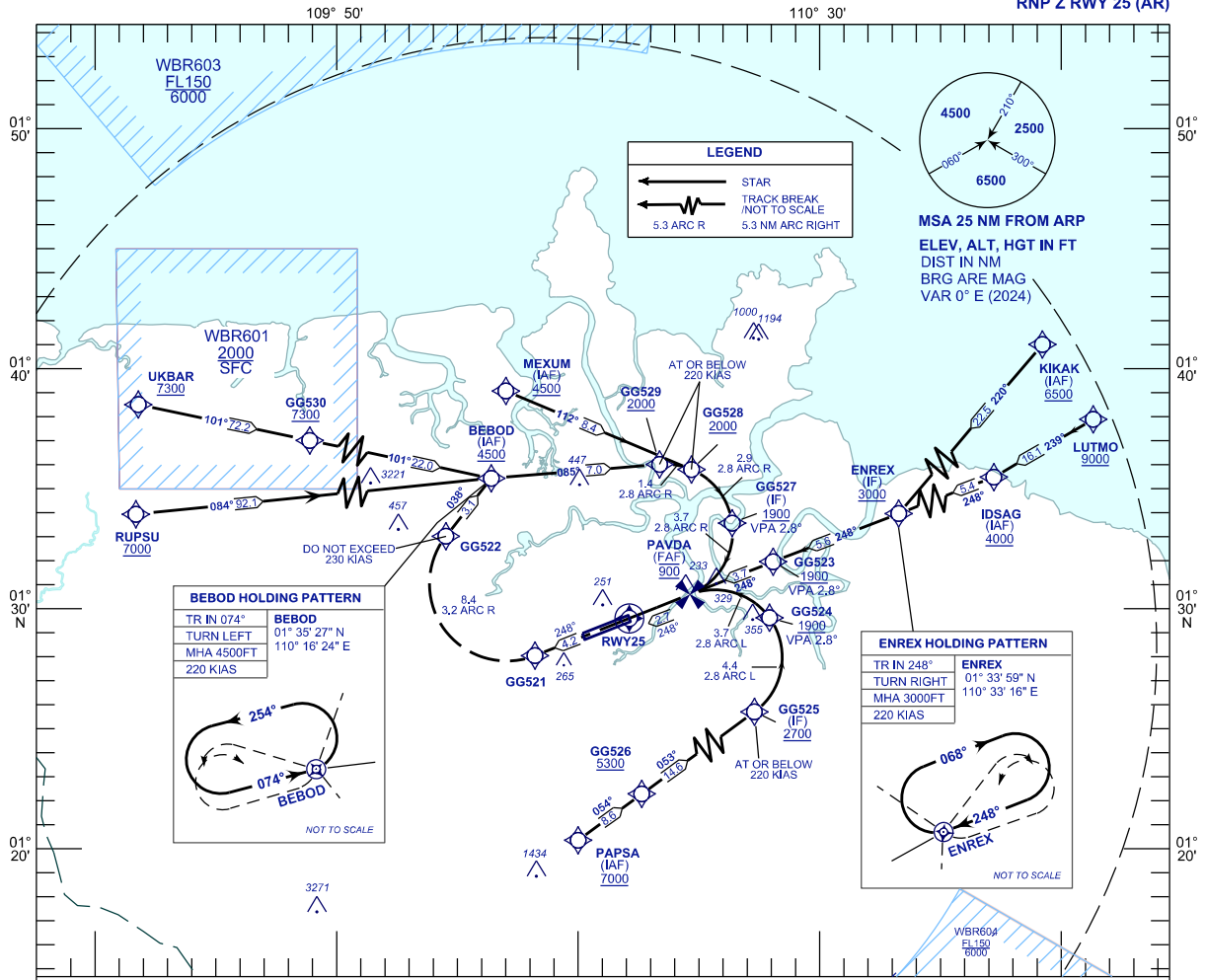
INSTRUMENT APPROACH CHART - ICAO

AERODROME ELEV 88 FT
HEIGHT RELATED TO THR RWY 25 - ELEV 42 FT

APP	TWR	SMC	ATIS
120.2	118.1	121.9	128.4
123.85	121.7		

KUCHING/KUCHING INTERNATIONAL AIRPORT (WBGG)

RNP Z RWY 25 (AR)



VPA 2.8°
RDH 54FT

MISSED APPROACH
CLIMB TO 4500FT VIA THE RNP MISSED APPROACH TRACK TO BEBOD OR AS DIRECTED BY ATC

TRANSITION LEVEL FL130
TRANSITION ALT 11 000

STRAIGHT - IN APPROACH	OCA (OCH)		GROUND SPEED - KT	70	90	100	120	140	160	
CATEGORY OF AIRCRAFT	C	D	RATE OF DESCENT (2.8°) (FEET/MIN)	347	446	495	594	693	792	
RNP 0.3	465 (423)									
CIRCLING AND ALTERNATE N/A										
				DISTANCE TO THRESHOLD (NM)		2.7		2		1
				ALTITUDE (FEET)		900		670		370

- | | | |
|---|---|------------------------------|
| <p>1. AUTHORIZATION REQUIRED</p> <p>4. APPROACH NOT AUTHORIZED WHEN AIRPORT TEMPERATURE BELOW 19°C OR ABOVE 40°C.</p> <p>5. WBGG ALTIMETER SETTING REQUIRED.</p> <p>7. CLIMB GRADIENT 4.2% REQUIRED TO REACH BEBOD AT 4500 FT.</p> <p>9. RNP 0.3 REQUIRED FROM BEBOD, ENREX, GG526 AND MEXUM TO RWY.</p> | <p>2. GNSS REQUIRED</p> <p>6. PAPI AND VERTICAL PATH ANGLE NOT COINCIDENT.</p> <p>8. RNP 1.0 REQUIRED TO BEBOD, ENREX AND GG526.</p> | <p>3. RF REQUIRED</p> |
|---|---|------------------------------|

REPLACEMENT CHART