

**STANDARD DEPARTURE CHART
INSTRUMENT (SID) - ICAO**

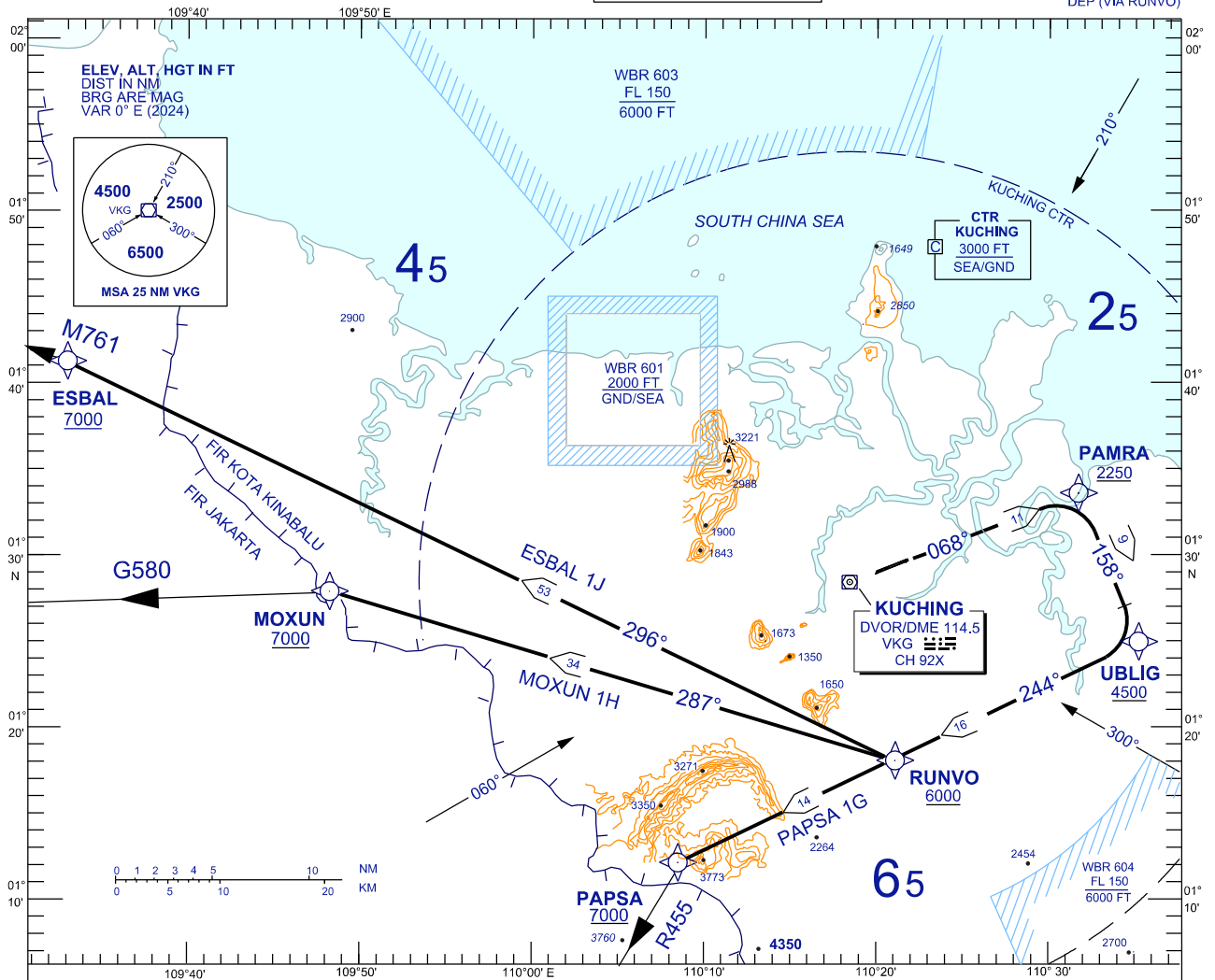
TRANSITION ALTITUDE
11,000 FT

TWR	118.1 (P)	SMC	121.9
	121.7 (S)	ATIS	128.4
APP	120.2 (P)	FIS	134.75
	123.85 (S)		
ACC	134.5 (P)		
	125.35 (S)		

**KUCHING/KUCHING (WBGG)
RWY 07 (RNAV)**

PAPSA 1G MOXUN 1H ESBAL 1J
DEP (VIA RUNVO)

BANK ANGLE : 15° ACHEIVED



RWY 07 (RIGHT TURN)
CLIMB ON TRACK TO PAMRA, THEN TURN RIGHT,

PAPSA ONE GOLF DEPARTURE
FOR PAPSA ONE GOLF
TRACK VIA UBLIG, THEN TRACK VIA RUNVO TO PAPSA

MOXUN ONE HOTEL DEPARTURE
FOR MOXUN ONE HOTEL
TRACK VIA UBLIG, THEN TRACK VIA RUNVO TO MOXUN

ESBAL ONE JULIET DEPARTURE
FOR ESBAL ONE JULIET
TRACK VIA UBLIG, THEN TRACK VIA RUNVO TO ESBAL

VERTICAL RESTRICTIONS :
ADHERE TO VERTICAL RESTRICTIONS eg . 7000 = NOT BELOW 7000 FT ON CLIMB UNLESS SPECIFICALLY CANCELLED BY ATC

COMMUNICATION FAILURE :

- SQUAWK 7600
- IF UNDER PILOT NAVIGATION, MAINTAIN LAST ASSIGNED LEVEL FOR 3 MINUTES, IF NO ONWARD CLEARANCE IS RECEIVED, SUBSEQUENTLY CLIMB TO COMPLY WITH SID.
- IF UNDER RADAR VECTORED : MAINTAIN VECTOR FOR 2 MINUTES, IF BELOW MSA, CLIMB TO MSA, THEN TRACK TO INTERCEPT CLEARED OR PREVIOUSLY ASSIGNED SID TO DESTINATION

REPLACEMENT CHART