

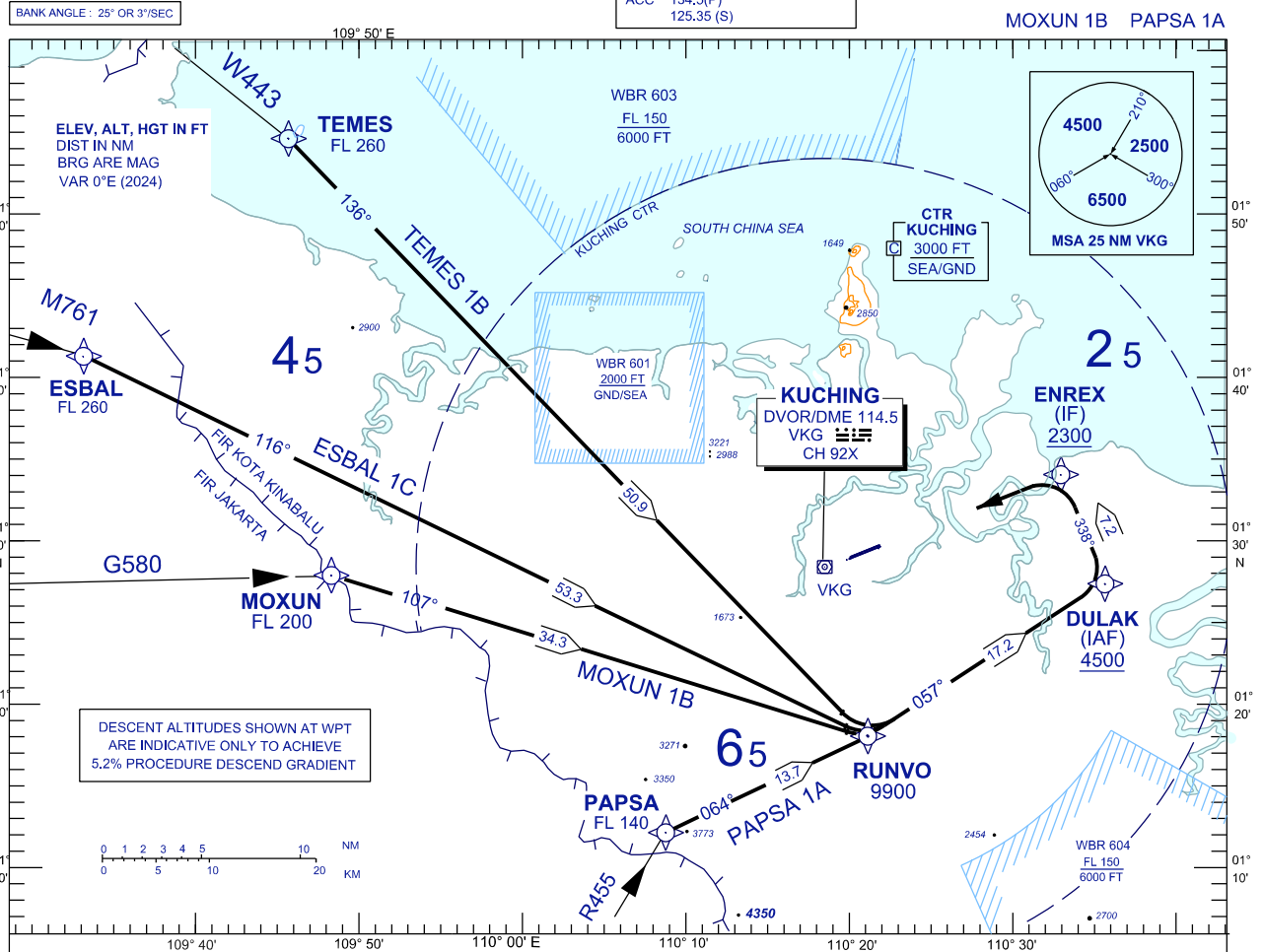
**STANDARD ARRIVAL CHART
INSTRUMENT (STAR) - ICAO**

TRANSITION ALTITUDE
11,000 FT

TWR	118.1 (P)	SMC	121.9
	121.7 (S)	ATIS	128.4
APP	120.2 (P)	FIS	134.75
	123.85 (S)		
ACC	134.5(P)		
	125.35 (S)		

**KUCHING/KUCHING (WBGG)
RWY 25 (RNAV)**

TEMES 1B ESBAL 1C
MOXUN 1B PAPSA 1A



ARRIVALS

- TEMES ONE BRAVO** : FROM TEMES TRACK TO RUNVO, THEN TRACK TO DULAK AND TO ENREX,
- ESBAL ONE CHARLIE** : FROM ESBAL TRACK TO RUNVO, THEN TRACK TO DULAK AND TO ENREX,
- MOXUN ONE BRAVO** : FROM MOXUN TRACK TO RUNVO, THEN TRACK TO DULAK AND TO ENREX,
- PAPSA ONE ALPHA** : FROM PAPSA TRACK TO RUNVO, THEN TRACK TO DULAK AND TO ENREX,

FROM ENREX INTERCEPT LOC IKG FOR ILS Z/LOC Z RWY 25 OR INTERCEPT RDL 070 VKG FOR VOR Z RWY 25.

VERTICAL RESTRICTIONS :

ADHERE TO VERTICAL RESTRICTIONS eg . 4500 = NOT BELOW 4500 FT ON DESCENT UNLESS SPECIFICALLY CANCELLED BY ATC

COMMUNICATION FAILURE :

- * SQUAWK 7600
- * IF UNDER PILOT NAVIGATION, CONTINUE ON STAR AND LAND
- * IF UNDER RADAR VECTORED, MAINTAIN VECTOR FOR 1 MINUTE.
- IF BELOW MSA, CLIMB TO MSA, THEN TRACK TO INTERCEPT CLEARED OR PREVIOUSLY ASSIGNED STAR AND LAND.

REPLACEMENT CHART