

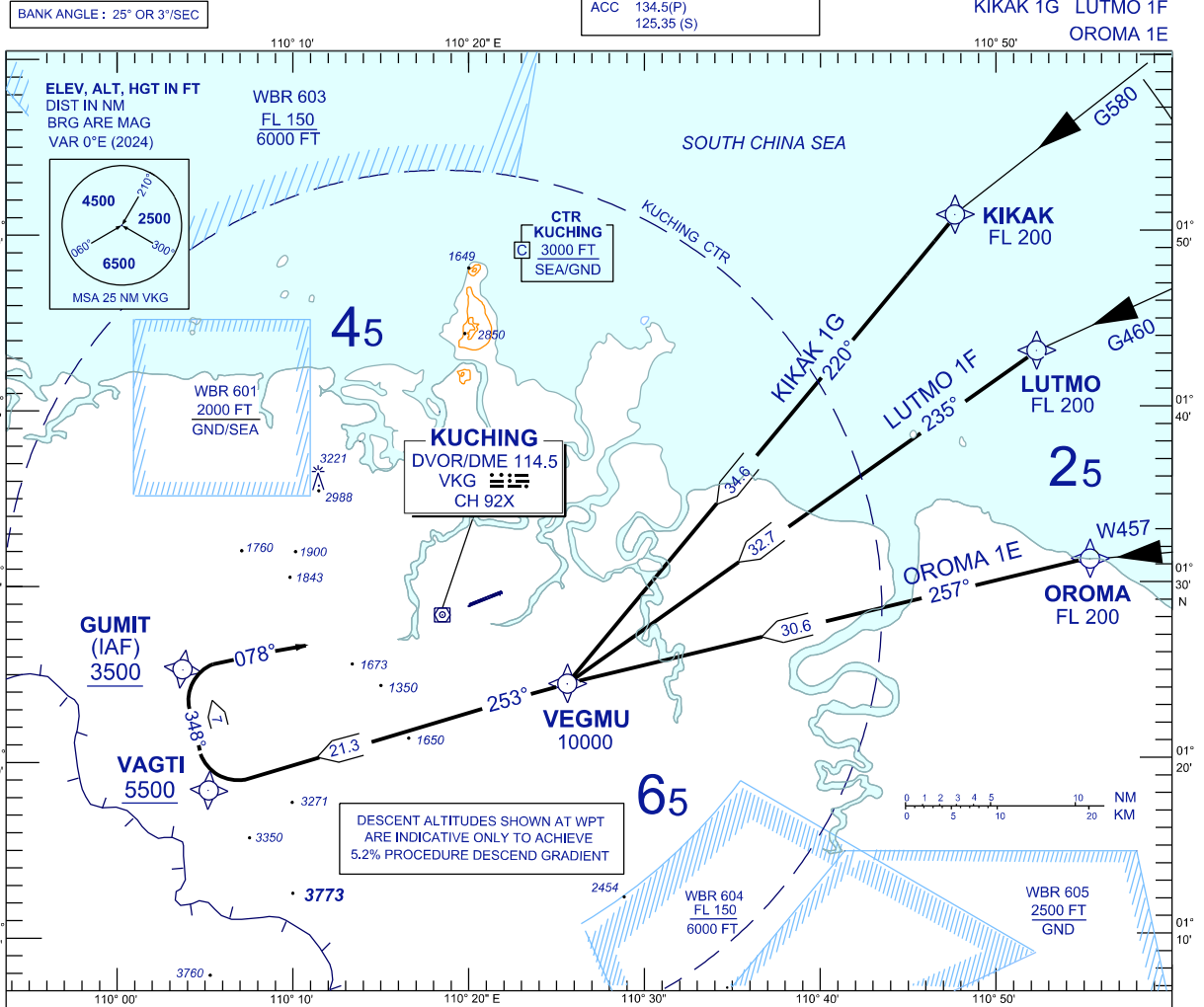
**STANDARD ARRIVAL CHART
INSTRUMENT (STAR) - ICAO**

TRANSITION ALTITUDE
11,000 FT

TWR	118.1 (P)	SMC	121.9
	121.7 (S)	ATIS	128.4
APP	120.2 (P)	FIS	134.75
	123.85 (S)		
ACC	134.5(P)		
	125.35 (S)		

**KUCHING/KUCHING (WBGG)
RWY 07 (RNAV)**

KIKAK 1G LUTMO 1F
OROMA 1E



ARRIVALS	
KIKAK ONE GOLF	: FROM KIKAK TRACK TO VEGMU, THEN TRACK TO VAGTI AND TO GUMIT, INTERCEPT RDL 258 VKG FOR VOR Z RWY 07 APPROACH.
LUTMO ONE FOXTROT	: FROM LUTMO TRACK TO VEGMU, THEN TRACK TO VAGTI AND TO GUMIT, INTERCEPT RDL 258 VKG FOR VOR Z RWY 07 APPROACH.
OROMA ONE ECHO	: FROM OROMA TRACK TO VEGMU, THEN TRACK TO VAGTI AND TO GUMIT, INTERCEPT RDL 258 VKG FOR VOR Z RWY 07 APPROACH.
VERTICAL RESTRICTIONS :	
ADHERE TO VERTICAL RESTRICTIONS eg . 2300 = NOT BELOW 2300 FT ON DESCENT UNLESS SPECIFICALLY CANCELLED BY ATC	
COMMUNICATIONS FAILURE :	
* SQUAWK 7600	
* IF UNDER PILOT NAVIGATION, CONTINUE ON STAR AND LAND	
* IF UNDER RADAR VECTORED, MAINTAIN VECTOR FOR 1 MINUTE, IF BELOW MSA, CLIMB TO MSA, THEN TRACK TO INTERCEPT CLEARED OR PREVIOUSLY ASSIGNED STAR AND LAND	

REPLACEMENT CHART