

**STANDARD ARRIVAL CHART
INSTRUMENT (STAR) - ICAO**

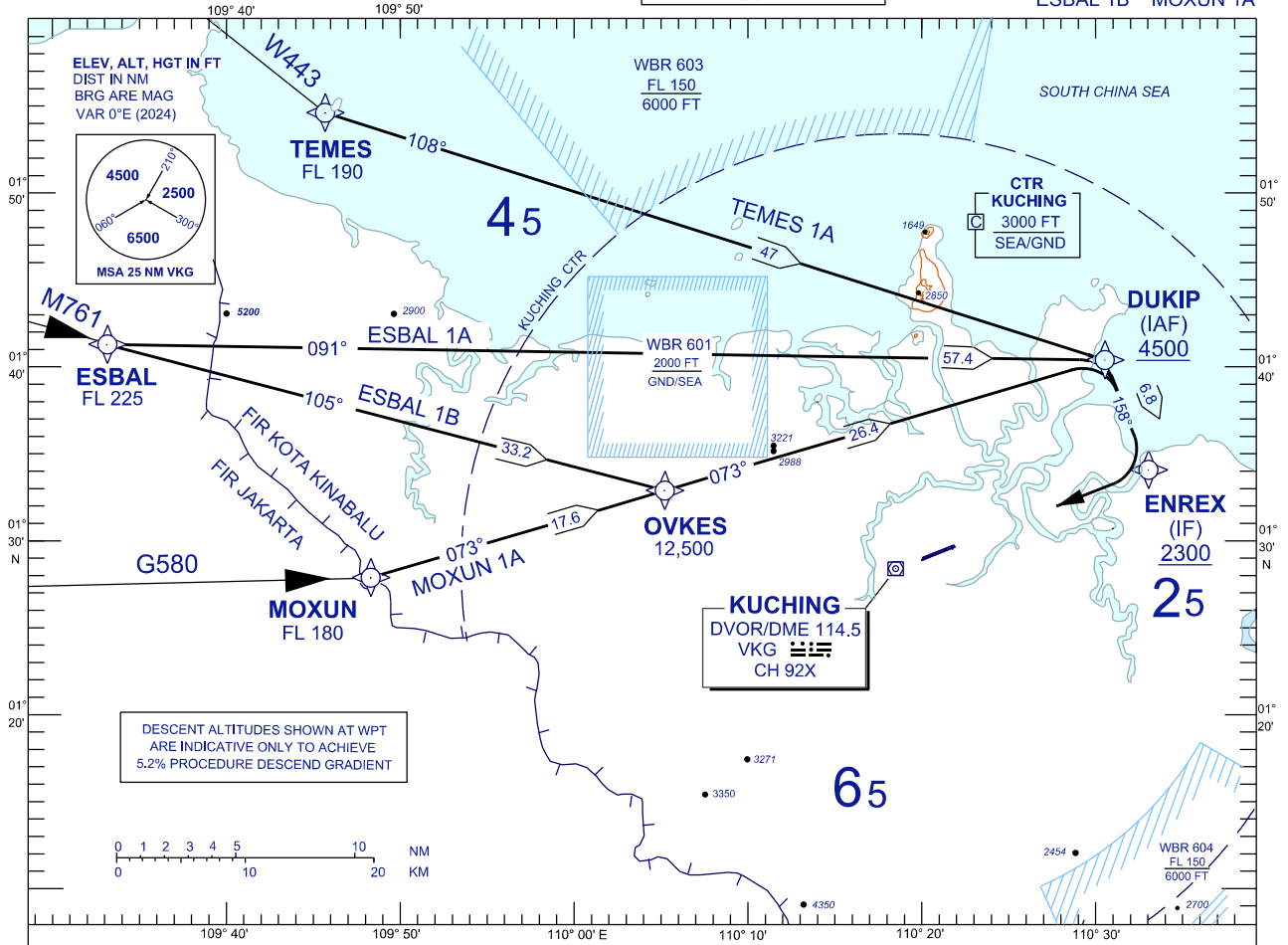
TRANSITION ALTITUDE
11,000 FT

TWR	118.1 (P)	SMC	121.9
	121.7 (S)	ATIS	128.4
APP	120.2 (P)	FIS	134.75
	123.85 (S)		
ACC	134.5 (P)		
	125.35 (S)		

**KUCHING/KUCHING (WBGG)
RWY 25 (RNAV)**

TEMES 1A ESBAL 1A
ESBAL 1B MOXUN 1A

BANK ANGLE : 25° OR 3°/SEC



ARRIVALS

- TEMES ONE ALPHA :** FROM TEMES TRACK TO DUKIP, THEN TRACK TO ENREX,
- ESBAL ONE ALPHA :** FROM ESBAL TRACK TO DUKIP, THEN TRACK TO ENREX,
- ESBAL ONE BRAVO :** FROM ESBAL TRACK TO OVKES, THEN TRACK TO DUKIP AND TO ENREX,
- MOXUN ONE ALPHA :** FROM MOXUN TRACK TO OVKES THEN DUKIP, THEN TRACK TO ENREX,

FROM ENREX INTERCEPT LOC IKG FOR ILS Z/LOC Z RWY 25 OR INTERCEPT RDL 070 VKG FOR VOR Z RWY 25.

VERTICAL RESTRICTIONS :

ADHERE TO VERTICAL RESTRICTIONS eg . 2300 = NOT BELOW 2300 FT ON DESCENT UNLESS SPECIFICALLY CANCELLED BY ATC

COMMUNICATIONS FAILURE :

- * SQUAWK 7600
- * IF UNDER PILOT NAVIGATION, CONTINUE ON STAR AND LAND
- * IF UNDER RADAR VECTORED, MAINTAIN VECTOR FOR 1 MINUTE, IF BELOW MSA, CLIMB TO MSA, THEN TRACK TO INTERCEPT CLEARED OR PREVIOUSLY ASSIGNED STAR AND LAND

REPLACEMENT CHART