

**STANDARD DEPARTURE CHART  
INSTRUMENT (SID) - ICAO**

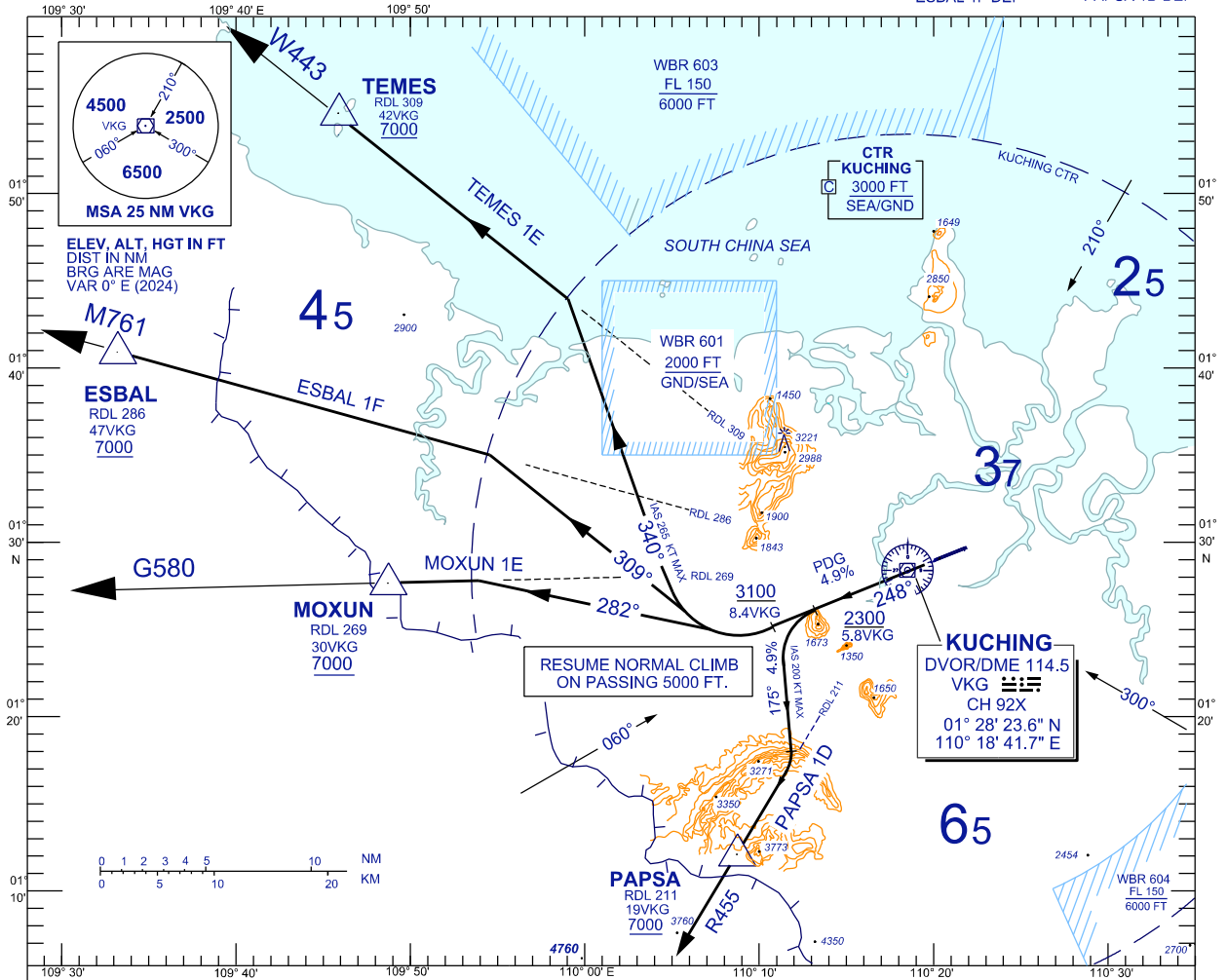
TRANSITION ALTITUDE  
11,000 FT

TWR	118.1 (P)	SMC	121.9
	121.7 (S)	ATIS	128.4
APP	120.2 (P)	FIS	134.75
	123.85 (S)		
ACC	134.5 (P)		
	125.35 (S)		

**KUCHING/KUCHING (WBGG)  
RWY 25**

TEMES 1E DEP  
ESBAL 1F DEP  
MOXUN 1E DEP  
PAPSA 1D DEP

BANK ANGLE : 15° ACHEIVED



**TEMES ONE ECHO DEPARTURE  
ESBAL ONE FOXTROT DEPARTURE  
MOXUN ONE ECHO DEPARTURE**

CLIMB AT 4.9% ON TRACK 248°  
AT/ABOVE 3100 FEET, TURN RIGHT,

**FOR TEMES ONE ECHO**

TRACK 340° TO INTERCEPT RDL 309 TO TEMES

**FOR ESBAL ONE FOXTROT**

TRACK 309° TO INTERCEPT RDL 286 TO ESBAL

**FOR MOXUN ONE ECHO**

TRACK 282° TO INTERCEPT RDL 269 TO MOXUN

**PAPSA ONE DELTA DEPARTURE**

CLIMB AT 4.9% ON TRACK 248°  
AT/ABOVE 2300 FEET, TURN LEFT,

**FOR PAPSA ONE DELTA**

TRACK 175° TO INTERCEPT RDL 211 TO PAPSA

SPEED (IAS)	120KT	140KT	160KT	180KT	200KT	230KT	265KT
4.9% ROC (FT/MIN)	599	698	799	899	997	1147	1324

**VERTICAL RESTRICTIONS :**

ADHERE TO VERTICAL RESTRICTIONS eg . 7000 = NOT BELOW 7000 FT ON CLIMB UNLESS SPECIFICALLY CANCELLED BY ATC

**COMMUNICATION FAILURE :**

- SQUAWK 7600
- IF UNDER PILOT NAVIGATION, MAINTAIN LAST ASSIGNED LEVEL FOR 3 MINUTES, IF NO ONWARD CLEARANCE IS RECEIVED, SUBSEQUENTLY CLIMB TO COMPLY WITH SID.
- IF UNDER RADAR VECTORED : MAINTAIN VECTOR FOR 2 MINUTES, IF BELOW MSA, CLIMB TO MSA, THEN TRACK TO INTERCEPT CLEARED OR PREVIOUSLY ASSIGNED SID TO DESTINATION

REPLACEMENT CHART