

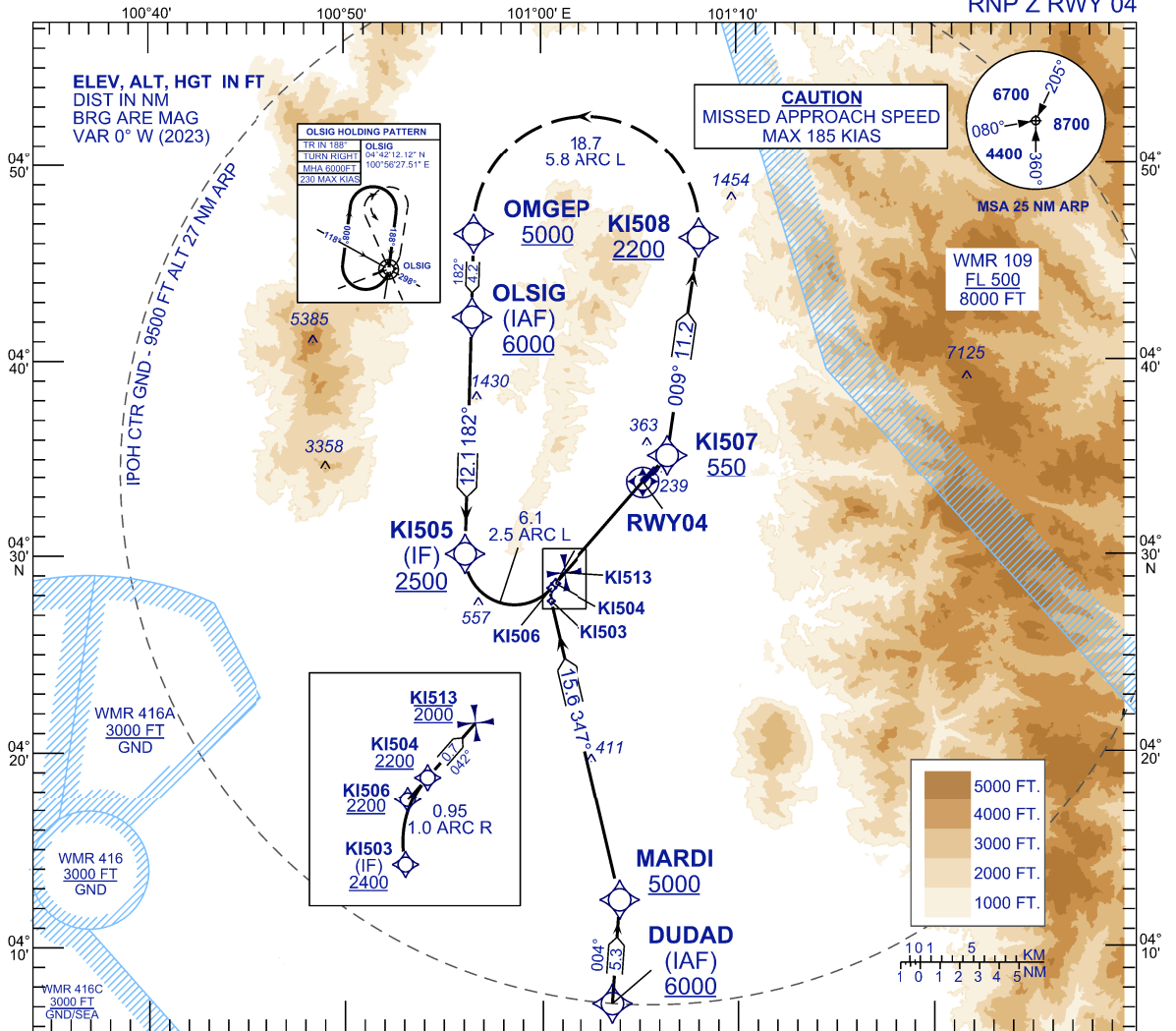
**INSTRUMENT
APPROACH
CHART - ICAO**

AERODROME ELEV 131 FT
HEIGHTS RELATED TO
THR RWY 04 - ELEV 131 FT

TWR	122.10
SMC	121.60
ATIS	127.05

**IPOH/SULTAN
AZLAN SHAH (WMKI)**

RNP Z RWY 04



TCH 53 VPA 2.8°	KI513 2000	TRANSITION LEVEL FL 130 TRANSITION ALT 11000
MISSED APPROACH CLIMB TO 6000FT OR ABOVE VIA RNP Z MISSED APCH TRACK TO OLSIG AND HOLD OR AS DIRECTED BY ATC		
CAUTION MISSED APPROACH SPEED MAX 185 KIAS		
THR ELEV 131 TO THR 04 (NM)		

STRAIGHT IN-APPROACH	OCA (H)	
CATEGORY OF AIRCRAFT	C	D
RNP 0.3	488 (357)	
CIRCLING AND ALTERNATE N/A		
AUTHORIZATION REQUIRED		

NOTES

- 1) APPROACH NOT AUTHORIZED WHEN AIRPORT TEMPERATURE BELOW 15°C OR ABOVE 40°C.
- 2) RF REQUIRED.
- 3) WMKI ALTIMETER SETTING REQUIRED.
- 4) GNSS REQUIRED.
- 5) PAPI AND VERTICAL PATH ANGLE NOT COINCIDENT.
- 6) RNP 0.30 FROM IAFS TO KI507.
- 7) RNP 0.50 FROM KI507 TO KI504

DISTANCE IN NM. BEARING ARE MAGNETIC. ELEVATION IN FEET AMSL.

NEW CHART